

À des fins de recherche uniquement

Anticorps Polyclonal de lapin anti-Inhibin beta A-Specific



Numéro de catalogue:17524-1-AP

Informations de base

Numéro de catalogue:
17524-1-AP

Taille:
150ul , Concentration: 400 µg/ml by
Nanodrop and 133 µg/ml by Bradford
method using BSA as the standard;

Hôte:
Lapin

Isotype:
IgG

Numéro d'acquisition GenBank:
NM_002192

Identification du gène (NCBI):
3624

Nom complet:
inhibin, beta A

MW calculé
47 kDa

MW observés:
47 kDa

Méthode de purification:
Purification par affinité contre
l'antigène

Dilutions recommandées:
WB 1:500-1:1000
IP 0.5-4.0 ug for IP and 1:500-1:1000
for WB

Applications

Applications testées:
IP, WB,ELISA

Spécificité de l'espèce:
Humain, rat, souris

Contrôles positifs:

WB : tissu cérébral de souris, cellules PC-3, tissu
cérébral de rat

IP : tissu cérébral de rat,

Informations générales

Inhibin β A (INHBA) is a ligand in the transforming growth factor β (TGF- β) superfamily. Inhibin β A forms a disulfide-linked homo-dimer known as activin A, which has been implicated in multiple biologic processes, including neoplastic progression. The inhibin β A can also bind the β B and α isoforms to form activin AB and inhibin, respectively.

Stockage

Stockage:

Stocker à -20°C. Stable pendant un an après l'expédition.

Tampon de stockage:

PBS avec azoture de sodium à 0,02 % et glycérol à 50 % pH 7,3

L'aliquotage n'est pas nécessaire pour le stockage à -20C

*** Les 20ul contiennent 0,1% de BSA.

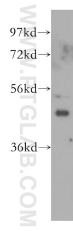
For technical support and original validation data for this product please contact:

T: 1 (888) 4PTGLAB (1-888-478-4522) (toll free
in USA), or 1(312) 455-8498 (outside USA)

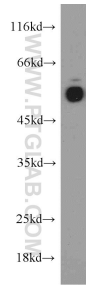
E: proteintech@ptglab.com
W: ptglab.com

This product is exclusively available under Proteintech Group brand and is not available to purchase from any other manufacturer.

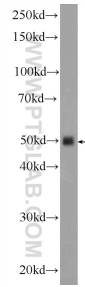
Données de validation sélectionnées



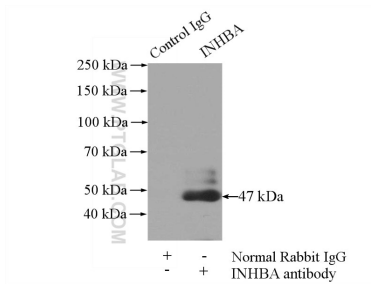
PC-3 cells were subjected to SDS PAGE followed by western blot with 17524-1-AP (Inhibin beta A-Specific antibody) at dilution of 1:300 incubated at room temperature for 1.5 hours.



rat brain tissue were subjected to SDS PAGE followed by western blot with 17524-1-AP (Inhibin beta A-Specific antibody) at dilution of 1:300 incubated at room temperature for 1.5 hours.



mouse brain tissue were subjected to SDS PAGE followed by western blot with 17524-1-AP (Inhibin beta A-Specific antibody) at dilution of 1:600 incubated at room temperature for 1.5 hours.



IP Result of anti-Inhibin beta A-Specific (IP:17524-1-AP, 4ug; Detection:17524-1-AP 1:500) with rat brain tissue lysate 4000ug.