

À des fins de recherche uniquement

Anticorps Polyclonal de lapin anti-ACADL-Specific



Numéro de catalogue: 17526-1-AP

Phare

38 Publications

Informations de base

Numéro de catalogue:
17526-1-AP

Taille:
150ul , Concentration: 260 µg/ml by Nanodrop and 267 µg/ml by Bradford method using BSA as the standard;

Hôte:
Lapin

Isotype:
IgG

Numéro d'acquisition GenBank:
NM_001608

Identification du gène (NCBI):

Nom complet:
acyl-Coenzyme A dehydrogenase,
long chain

MW calculé

48 kDa

MW observés:

48 kDa

Méthode de purification:
Purification par affinité contre l'antigène

Dilutions recommandées:
WB 1:1000-1:4000

Applications

Applications testées:
WB, ELISA

Demandes citées:
IF, IHC, IP, WB

Spécificité de l'espèce:
Humain, souris

Espèces citées:
Humain, porc, souris, Brebis

Contrôles positifs:

WB : tissu rénal de souris, tissu cardiaque de souris, tissu hépatique de souris, tissu pulmonaire de souris

Informations générales

ACADL(Long-chain specific acyl-CoA dehydrogenase, mitochondrial) is also named as LCAD and belongs to the acyl-CoA dehydrogenase family. It catalyzes the first reaction of the mitochondrial β -oxidation of fatty acids and is synthesized in the cytosol as a precursor that is larger than its mature form. The size difference between the precursor and mature rat LCAD has been estimated to be 3 kDa on the basis of SDS-PAGE(PMID:1774065). Defects in ACADL are a cause of acyl-CoA dehydrogenase very long-chain deficiency (ACADVLD). This antibody is specific to ACADL.

Publications notables

| Autrice | Pubmed ID | Journal | Application |
|-----------------|-----------|-------------|-------------|
| Tingting Lv | 33659423 | Bio Protoc | WB, IP |
| De Huang | 25242319 | Cell Rep | WB, IHC |
| Dharendra Thapa | 30323061 | J Biol Chem | WB |

Stockage

Stockage:

Stocker à -20°C. Stable pendant un an après l'expédition.

Tampon de stockage:

PBS avec azote de sodium à 0,02 % et glycérol à 50 % pH 7,3

L'aliquotage n'est pas nécessaire pour le stockage à -20C

*** Les 20ul contiennent 0,1% de BSA.

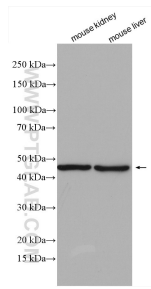
For technical support and original validation data for this product please contact:

T: 1 (888) 4PTGLAB (1-888-478-4522) (toll free in USA), or 1(312) 455-8498 (outside USA)

E: proteintech@ptglab.com
W: ptglab.com

This product is exclusively available under Proteintech Group brand and is not available to purchase from any other manufacturer.

Données de validation sélectionnées



Various lysates were subjected to SDS PAGE followed by western blot with 17526-1-AP (ACADL-Specific antibody) at dilution of 1:2000 incubated at room temperature for 1.5 hours.