

À des fins de recherche uniquement

Anticorps Polyclonal de lapin anti-MTA2



Numéro de catalogue: 17554-1-AP

Phare

4 Publications

Informations de base

Numéro de catalogue:
17554-1-AP

Taille:
150ul, Concentration: 350 µg/ml by Nanodrop and 200 µg/ml by Bradford method using BSA as the standard;

Hôte:
Lapin

Isotype:
IgG

Immunogen Catalog Number:
AG11713

Numéro d'acquisition GenBank:
BC053650

Identification du gène (NCBI):
9219

Nom complet:
metastasis associated 1 family, member 2

MW calculé
668 aa, 75 kDa

MW observés:
70-75 kDa

Méthode de purification:
Purification par affinité contre l'antigène

Dilutions recommandées:
WB 1:2000-1:10000
IP 0.5-4.0 ug for IP and 1:500-1:1000 for WB
IHC 1:20-1:200

Applications

Applications testées:
IHC, IP, WB, ELISA

Demandes citées:
ChIP, CoIP, WB

Spécificité de l'espèce:
Humain, rat, souris

Espèces citées:
Humain

Remarque-IHC: il est suggéré de démasquer l'antigène avec un tampon de TE buffer pH 9,0; (*) A défaut, 'le démasquage de l'antigène peut être 'effectué avec un tampon citrate pH 6,0.

Contrôles positifs:

WB : cellules HeLa, cellules HEK-293, cellules Jurkat, tissu de thymus de souris

IP : tissu de thymus de souris,

IHC : tissu de côlon humain, tissu cardiaque humain

Informations générales

Metastasis-associated protein MTA2, also named as MTA1L1 or PID, is a 668 amino acid protein, which contains one BAH domain, one ELM2 domain, one GATA-type zinc finger and one SANT domain. MTA2 localizes in the nucleus and is widely expressed in many tissues. MTA2 may be involved in the regulation of gene expression as repressor and activator.

Publications notables

Autrice	Pubmed ID	Journal	Application
Orhi Barroso-Gomila	34795231	Nat Commun	WB
Su-Li Dai	33340431	Cancer Sci	CoIP,ChIP
Dapeng Wang	35201651	EMBO Rep	WB

Stockage

Stockage:

Stocker à -20°C. Stable pendant un an après l'expédition.

Tampon de stockage:

PBS avec azoture de sodium à 0,02 % et glycérol à 50 % pH 7,3

L'aliquotage n'est pas nécessaire pour le stockage à -20C

***** Les 20ul contiennent 0,1% de BSA.**

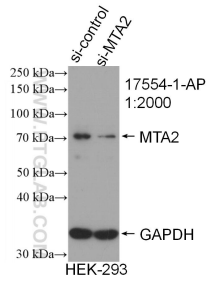
For technical support and original validation data for this product please contact:

T: 1 (888) 4PTGLAB (1-888-478-4522) (toll free in USA), or 1(312) 455-8498 (outside USA)

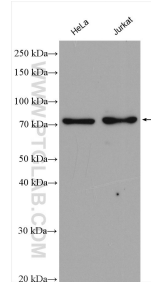
E: proteintech@ptglab.com
W: ptglab.com

This product is exclusively available under Proteintech Group brand and is not available to purchase from any other manufacturer.

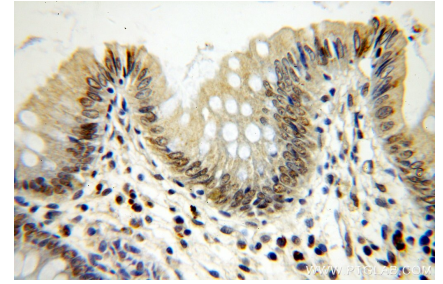
Données de validation sélectionnées



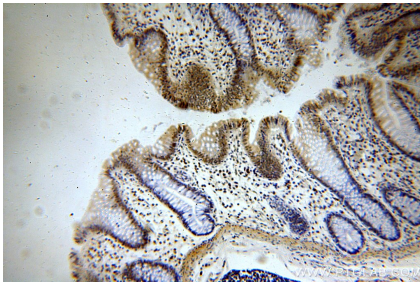
WB result of MTA2 antibody (17554-1-AP; 1:2000; incubated at room temperature for 1.5 hours) with sh-Control and sh-MTA2 transfected HEK-293 cells.



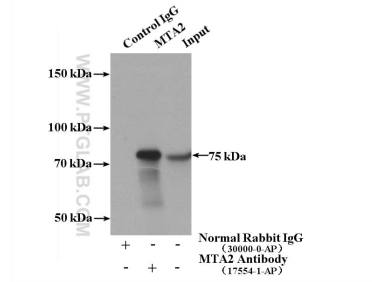
Various lysates were subjected to SDS PAGE followed by western blot with 17554-1-AP (MTA2 antibody) at dilution of 1:5000 incubated at room temperature for 1.5 hours.



Immunohistochemical analysis of paraffin-embedded human colon using 17554-1-AP (MTA2 antibody) at dilution of 1:100 (under 40x lens).



Immunohistochemical analysis of paraffin-embedded human colon using 17554-1-AP (MTA2 antibody) at dilution of 1:100 (under 10x lens).



IP Result of anti-MTA2 (IP:17554-1-AP, 4ug; Detection:17554-1-AP 1:500) with mouse thymus tissue lysate 2800ug.