

À des fins de recherche uniquement

Anticorps Polyclonal de lapin anti-CD146/MCAM



Numéro de catalogue: 17564-1-AP

Phare

22 Publications

Informations de base

Numéro de catalogue:

17564-1-AP

Taille:

150ul, Concentration: 550 µg/ml by Nanodrop;

Hôte:

Lapin

Isotype:

IgG

Immunogen Catalog Number:

AG11762

Numéro d'acquisition GenBank:

BC056418

Identification du gène (NCBI):

4162

Nom complet:

melanoma cell adhesion molecule

MW calculé

646 aa, 72 kDa

MW observés:

113-120 kDa

Méthode de purification:

Purification par affinité contre l'antigène

Dilutions recommandées:

WB 1:2000-1:10000

IP 0.5-4.0 µg for IP and 1:500-1:3000 for WB

IHC 1:200-1:600

IF 1:50-1:500

Applications

Applications testées:

FC, IF, IHC, IP, WB, ELISA

Demandes citées:

Cell treatment, FC, IF, IHC, IP, WB

Spécificité de l'espèce:

Humain, rat, souris

Espèces citées:

Humain, rat, souris

Remarque-IHC: il est suggéré de démasquer l'antigène avec un tampon de TE buffer pH 9,0; (*) À défaut, le démasquage de l'antigène peut être effectué avec un tampon citrate pH 6,0.

Contrôles positifs:

WB : cellules HeLa, cellules A375, cellules HepG2, tissu pulmonaire de souris

IP : cellules HeLa, cellules HepG2

IHC : tissu de tumeur ovarienne humain, tissu cardiaque humain, tissu cérébral humain, tissu placentaire humain, tissu pulmonaire humain, tissu rénal humain, tissu splénique humain, tissu testiculaire humain

IF : cellules HUVEC, cellules HeLa

Informations générales

CD146, also known as melanoma cell adhesion molecule (MCAM) or MUC18, originally identified as a biomarker of melanoma progression, is a transmembrane glycoprotein of 113-130 kDa, belonging to the immunoglobulin (Ig) superfamily (PMID: 8378324; 25993332). Structurally, it consists of five Ig domains, a transmembrane domain, and a cytoplasmic region. In normal adult tissue, CD146 is primarily expressed by vascular endothelium and smooth muscle. CD146 is a key cell adhesion protein in vascular endothelial cell activity and angiogenesis, and has been used as marker of circulating endothelium cells (CECs) (PMID: 19356677). In addition to the membrane-anchored form of CD146, a soluble form of CD146 (sCD146, 105 kDa) has also been found in human plasma and in the supernatant of cultured human endothelial cells (PMID: 9462829; 19229070; 16374253; 14597988).

Publications notables

Autrice	Pubmed ID	Journal	Application
Peter Genovese	34551191	J Tissue Eng Regen Med	WB, IHC
Hao Zhang	36093059	iScience	WB, IHC, IF
Zuping Wu	36068594	Stem Cell Res Ther	FC

Stockage

Stockage:

Stocker à -20°C. Stable pendant un an après l'expédition.

Tampon de stockage:

PBS avec azoture de sodium à 0,02 % et glycérol à 50 % pH 7,3

L'aliquotage n'est pas nécessaire pour le stockage à -20C

*** Les 20ul contiennent 0,1% de BSA.

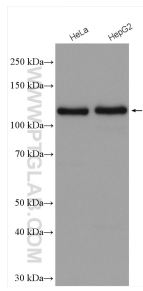
For technical support and original validation data for this product please contact:

T: 1 (888) 4PTGLAB (1-888-478-4522) (toll free in USA), or 1(312) 455-8498 (outside USA)

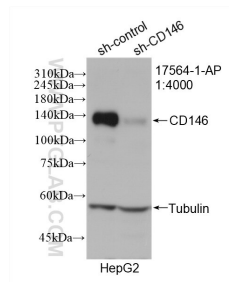
E: proteintech@ptglab.com
W: ptglab.com

This product is exclusively available under Proteintech Group brand and is not available to purchase from any other manufacturer.

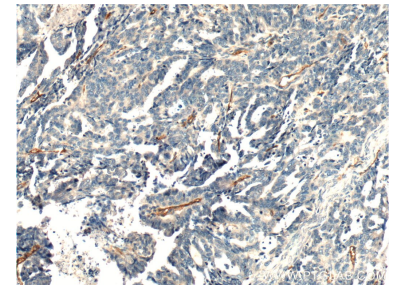
Données de validation sélectionnées



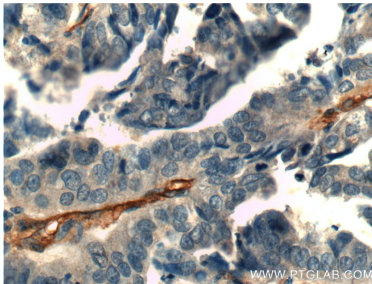
Various lysates were subjected to SDS PAGE followed by western blot with 17564-1-AP (CD146/MCAM antibody) at dilution of 1:5000 incubated at room temperature for 1.5 hours.



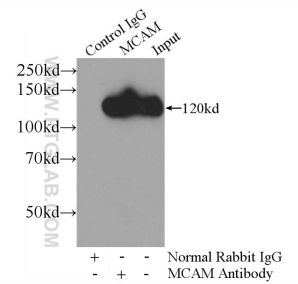
WB result of CD146/MCAM antibody (17564-1-AP; 1:4000; incubated at room temperature for 1.5 hours) with sh-Control and sh-CD146/MCAM transfected HepG2 cells.



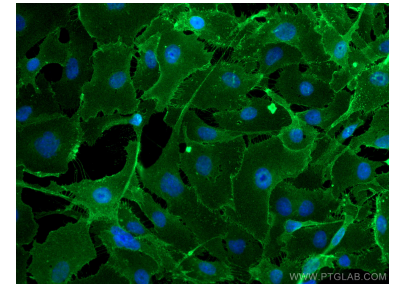
Immunohistochemical analysis of paraffin-embedded human ovary tumor tissue slide using 17564-1-AP (CD146/MCAM antibody at dilution of 1:600 (under 10x lens).



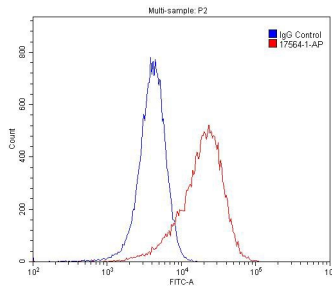
Immunohistochemical analysis of paraffin-embedded human ovary tumor tissue slide using 17564-1-AP (CD146/MCAM antibody at dilution of 1:600 (under 40x lens).



IP Result of anti-CD146/MCAM (IP:17564-1-AP, 4ug; Detection:17564-1-AP 1:1500) with HeLa cells lysate 4000ug.



Immunofluorescent analysis of (4% PFA) fixed HUVEC cells using CD146/MCAM antibody (17564-1-AP) at dilution of 1:200 and CoraLite@488-Conjugated AffiniPure Goat Anti-Rabbit IgG(H+L).



1x10⁶ HUVEC cells were stained with 0.2ug CD146/MCAM antibody (17564-1-AP, red) and control antibody (blue). Fixed with 4% PFA blocked with 3% BSA (30 min). Alexa Fluor 488-conjugated AffiniPure Goat Anti-Rabbit IgG(H+L) with dilution 1:1500.