

À des fins de recherche uniquement

Anticorps Polyclonal de lapin anti-Beta Catenin



Numéro de catalogue: 17565-1-AP

Phare

100 Publications

Informations de base

Numéro de catalogue: 17565-1-AP	Numéro d'acquisition GenBank: BC058926	Méthode de purification: Purification par affinité contre l'antigène
Taille: 150ul, Concentration: 600 µg/ml by Nanodrop;	Identification du gène (NCBI): 1499	Dilutions recommandées: WB 1:2000-1:16000 IHC 1:50-1:500 IF 1:200-1:800
Hôte: Lapin	Nom complet: catenin (cadherin-associated protein), beta 1, 88kDa	
Isotype: IgG	MW calculé: 781 aa, 86 kDa	
Immunogen Catalog Number: AG11763	MW observés: 92 kDa	

Applications

Applications testées:

IF, IHC, WB, ELISA

Demandes citées:

CoIP, IF, IHC, IP, WB

Spécificité de l'espèce:

Humain, rat, souris

Espèces citées:

Humain, rat, souris

Contrôles positifs:

WB : cellules HEK-293, cellules A431, cellules C6, cellules HeLa, cellules MCF-7, cellules NIH/3T3, tissu cérébral de rat, tissu cérébral de souris, tissu hépatique de rat, tissu hépatique de souris

IHC : tissu de cancer du foie humain, tissu de cancer du sein humain

IF : cellules MCF-7, cellules T-47D

Remarque-IHC: il est suggéré de démasquer l'antigène avec un tampon de TE buffer pH 9,0; (*) À défaut, le démasquage de l'antigène peut être effectué avec un tampon citrate pH 6,0.

Informations générales

β -Catenin, also known as CTNNB1, is an evolutionarily conserved, multifunctional intracellular protein. β -Catenin was originally identified in cell adherens junctions (AJs) where it functions to bridge the cytoplasmic domain of cadherins to α -catenin and the actin cytoskeleton. Besides its essential role in the AJs, β -catenin is also a key downstream component of the canonical Wnt pathway that plays diverse and critical roles in embryonic development and adult tissue homeostasis. The Wnt/ β -catenin pathway is also involved in the activation of other intracellular messengers such as calcium fluxes, JNK, and SRC kinases. Deregulation of β -catenin activity is associated with multiple diseases including cancers. (PMID: 22617422; 18334222)

Publications notables

Autrice	Pubmed ID	Journal	Application
Hai-Yan Wang	34588618	Acta Pharmacol Sin	WB
Jiao Wu	34517345	Aging (Albany NY)	WB
Tianfu Li	36089118	Cancer Lett	WB

Stockage

Stockage:

Stocker à -20°C. Stable pendant un an après l'expédition.

Tampon de stockage:

PBS avec azoture de sodium à 0,02 % et glycérol à 50 % pH 7,3

L'aliquotage n'est pas nécessaire pour le stockage à -20C

*** Les 20ul contiennent 0,1% de BSA.

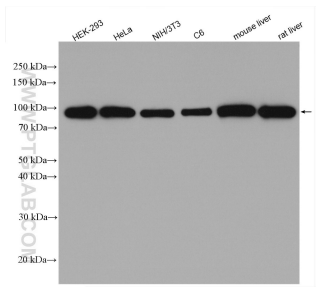
For technical support and original validation data for this product please contact:

T: 1 (888) 4PTGLAB (1-888-478-4522) (toll free in USA), or 1(312) 455-8498 (outside USA)

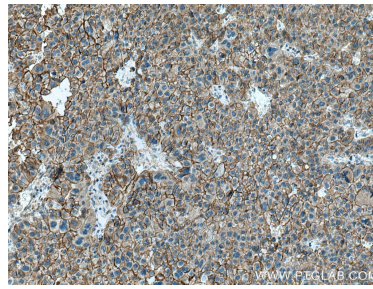
E: proteintech@ptglab.com
W: ptglab.com

This product is exclusively available under Proteintech Group brand and is not available to purchase from any other manufacturer.

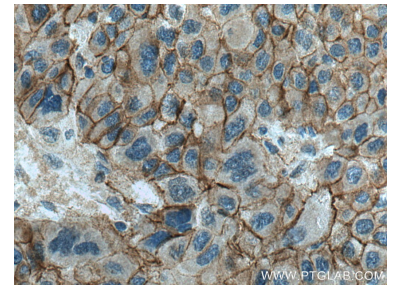
Données de validation sélectionnées



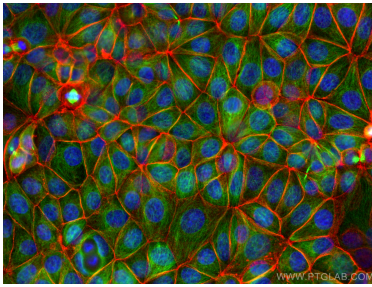
Various lysates were subjected to SDS PAGE followed by western blot with 17565-1-AP (Beta Catenin antibody) at dilution of 1:8000 incubated at room temperature for 1.5 hours.



Immunohistochemical analysis of paraffin-embedded human liver cancer tissue slide using 17565-1-AP (beta-Catenin antibody) at dilution of 1:200 (under 10x lens). Heat mediated antigen retrieval with Tris-EDTA buffer (pH 9.0).



Immunohistochemical analysis of paraffin-embedded human liver cancer tissue slide using 17565-1-AP (beta-Catenin antibody) at dilution of 1:200 (under 40x lens). Heat mediated antigen retrieval with Tris-EDTA buffer (pH 9.0).



Immunofluorescent analysis of (4% PFA) fixed MCF-7 cells using Beta Catenin antibody (17565-1-AP) at dilution of 1:400 and CoraLite®594-Conjugated AffiniPure Goat Anti-Rabbit IgG(H+L), Alpha Tubulin antibody (66031-1-Ig, Clone: 1E4C11, green).