

À des fins de recherche uniquement

Anticorps Polyclonal de lapin anti-AKT2



Numéro de catalogue: 17609-1-AP

Phare

13 Publications

Informations de base

Numéro de catalogue:
17609-1-AP

Taille:
150ul, Concentration: 267 µg/ml by Nanodrop and 267 µg/ml by Bradford method using BSA as the standard;

Hôte:
Lapin

Isotype:
IgG

Immunogen Catalog Number:
AG11770

Numéro d'acquisition GenBank:
BC063421

Identification du gène (NCBI):
208

Nom complet:
v-akt murine thymoma viral oncogene homolog 2

MW calculé
481 aa, 56 kDa

MW observés:
56 kDa

Méthode de purification:
Purification par affinité contre l'antigène

Dilutions recommandées:
WB 1:500-1:1000
IP 0.5-4.0 ug for IP and 1:500-1:1000 for WB
IHC 1:100-1:400

Applications

Applications testées:
IHC, IP, WB, ELISA

Demandes citées:
IHC, WB

Spécificité de l'espèce:
Humain, rat, souris

Espèces citées:
Humain, rat, souris

Remarque-IHC: il est suggéré de démasquer l'antigène avec un tampon de TE buffer pH 9.0; (*) A défaut, 'le démasquage de l'antigène peut être 'effectué avec un tampon citrate pH 6,0.

Contrôles positifs:

WB : cellules NIH/3T3,

IP : cellules HepG2,

IHC : tissu hépatique humain, tissu de cancer du foie humain, tissu de cancer du sein humain, tissu de tumeur ovarienne humain

Informations générales

AKT2 is one of 3 closely related serine/threonine-protein kinases (AKT1, AKT2 and AKT3) called the AKT kinase, and which regulate many processes including metabolism, proliferation, cell survival, growth and angiogenesis and their activation has been observed in a wide variety of cancers. AKT2 is mainly involved in cancer cell survival, apoptosis inhibition, migration and invasion (PMID:21979951). Defects in AKT2 are a cause of susceptibility to breast cancer (BC). AKT2 promotes metastasis of tumor cells without affecting the latency of tumor development. And defects in AKT2 are a cause of non-insulin-dependent diabetes mellitus (NIDDM) and hypoinsulinemic hypoglycemia with hemihypertrophy (HIHGH). The full length protein has four glycosylation sites.

Publications notables

Autrice	Pubmed ID	Journal	Application
Dong Pan	34604239	Front Cell Dev Biol	WB
Lin Wang	33015042	Front Cell Dev Biol	WB
Ting Liu	32873299	Respir Res	WB,IHC

Stockage

Stockage:

Stocker à -20°C. Stable pendant un an après l'expédition.

Tampon de stockage:

PBS avec azoture de sodium à 0,02 % et glycérol à 50 % pH 7,3

L'aliquotage n'est pas nécessaire pour le stockage à -20C

*** Les 20ul contiennent 0,1% de BSA.

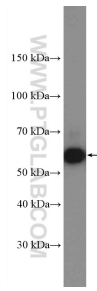
For technical support and original validation data for this product please contact:

T: 1 (888) 4PTGLAB (1-888-478-4522) (toll free in USA), or 1(312) 455-8498 (outside USA)

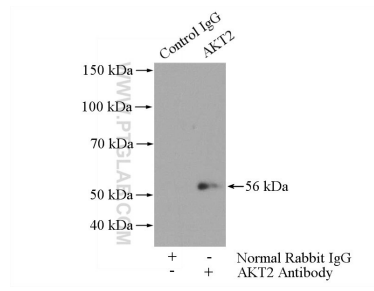
E: proteintech@ptglab.com
W: ptglab.com

This product is exclusively available under Proteintech Group brand and is not available to purchase from any other manufacturer.

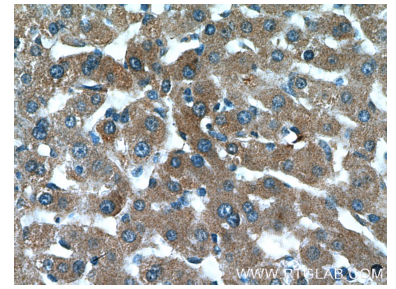
Données de validation sélectionnées



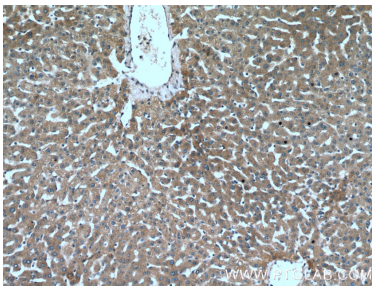
NIH/3T3 cells were subjected to SDS PAGE followed by western blot with 17609-1-AP (AKT2 Antibody) at dilution of 1:600 incubated at room temperature for 1.5 hours.



IP Result of anti-AKT2 (IP:17609-1-AP, 4 μ g; Detection:17609-1-AP 1:500) with HepG2 cells lysate 1600 μ g.



Immunohistochemical analysis of paraffin-embedded human liver tissue slide using 17609-1-AP (AKT2 Antibody) at dilution of 1:200 (under 40x lens).



Immunohistochemical analysis of paraffin-embedded human liver tissue slide using 17609-1-AP (AKT2 Antibody) at dilution of 1:200 (under 10x lens).