

À des fins de recherche uniquement

Anticorps Polyclonal de lapin anti-MYOM3



Numéro de catalogue: 17692-1-AP

10 Publications

Informations de base

Numéro de catalogue:

17692-1-AP

Taille:

150ul, Concentration: 500 µg/ml by Nanodrop and 267 µg/ml by Bradford method using BSA as the standard;

Hôte:

Lapin

Isotype:

IgG

Immunogen Catalog Number:

AG11849

Numéro d'acquisition GenBank:

BC067101

Identification du gène (NCBI):

127294

Nom complet:

myomesin family, member 3

MW calculé

162 kDa, 136 kDa

MW observés:

162 kDa

Méthode de purification:

Purification par affinité contre l'antigène

Dilutions recommandées:

WB 1:500-1:3000

IP 0.5-4.0 ug for IP and 1:500-1:1000 for WB

IHC 1:20-1:400

Applications

Applications testées:

IHC, IP, WB, ELISA

Demandes citées:

ELISA, IF, IP, WB

Spécificité de l'espèce:

Humain, souris

Espèces citées:

canin, Humain, souris

Remarque-IHC: il est suggéré de démasquer l'antigène avec un tampon de TE buffer pH 9,0; (*) À défaut, 'le démasquage de l'antigène peut être 'effectué avec un tampon citrate pH 6,0.

Contrôles positifs:

WB : tissu de muscle squelettique de souris, tissu de muscle squelettique de rat

IP : tissu de muscle squelettique de souris,

IHC : tissu de muscle squelettique humain,

Informations générales

MYOM3 (myomesin 3) is a structural component of the M-band in striated muscle and is involved in sarcomere stability and resistance during intense or sustained stretching. MYOM3 can be detected mainly in intermediate speed fibers of skeletal muscle. Recently high level of MYOM3 fragments were detected in sera from patients with muscular dystrophy, including Duchenne muscular dystrophy (DMD). MYOM3 fragments may be used as serum biomarker for DMD and other neuromuscular disorders. This antibody recognizes the intact MYOM3 protein (160-160 kDa) as well as MYOM3 fragments (100 kDa and 130 kDa). (26060189)

Publications notables

Autrice	Pubmed ID	Journal	Application
Minjung Lee	33124011	Int J Sports Med	ELISA
Flavien Bizot	36514350	Mol Ther Nucleic Acids	WB
Jeffrey M Lynch	30395621	PLoS One	WB

Stockage

Stockage:

Stocker à -20°C. Stable pendant un an après l'expédition.

Tampon de stockage:

PBS avec azoture de sodium à 0,02 % et glycérol à 50 % pH 7,3

L'aliquotage n'est pas nécessaire pour le stockage à -20C

*** Les 20ul contiennent 0,1% de BSA.

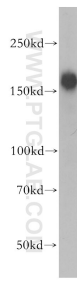
For technical support and original validation data for this product please contact:

T: 1 (888) 4PTGLAB (1-888-478-4522) (toll free in USA), or 1(312) 455-8498 (outside USA)

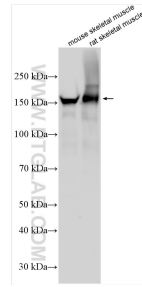
E: proteintech@ptglab.com
W: ptglab.com

This product is exclusively available under Proteintech Group brand and is not available to purchase from any other manufacturer.

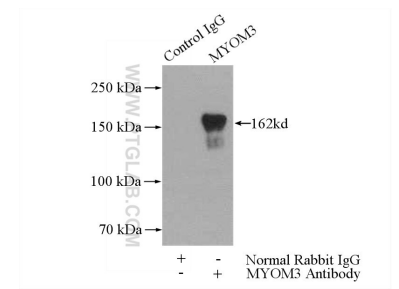
Données de validation sélectionnées



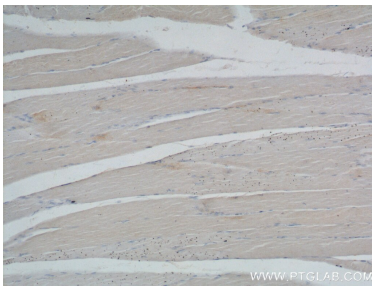
mouse skeletal muscle tissue were subjected to SDS PAGE followed by western blot with 17692-1-AP (MYOM3 antibody) at dilution of 1:500 incubated at room temperature for 1.5 hours.



Various lysates were subjected to SDS PAGE followed by western blot with 17692-1-AP (MYOM3 antibody) at dilution of 1:1500 incubated at room temperature for 1.5 hours.



IP Result of anti-MYOM3 (IP:17692-1-AP, 4ug; Detection:17692-1-AP 1:700) with mouse skeletal muscle tissue lysate 3600ug.



Immunohistochemical analysis of paraffin-embedded human skeletal muscle tissue slide using 17692-1-AP (MYOM3 Antibody) at dilution of 1:200 (under 10x lens).



Immunohistochemical analysis of paraffin-embedded human skeletal muscle tissue slide using 17692-1-AP (MYOM3 Antibody) at dilution of 1:200 (under 40x lens).