

À des fins de recherche uniquement

Anticorps Polyclonal de lapin anti-ABL2



Numéro de catalogue: 17693-1-AP

Phare

9 Publications

Informations de base

Numéro de catalogue:
17693-1-AP

Taille:
150ul, Concentration: 600 µg/ml by Nanodrop and 253 µg/ml by Bradford method using BSA as the standard;

Hôte:
Lapin

Isotype:
IgG

Immunogen Catalog Number:
AG11860

Numéro d'acquisition GenBank:
BC065912

Identification du gène (NCBI):

27

Nom complet:
v-abl Abelson murine leukemia viral oncogene homolog 2 (arg, Abelson-related gene)

MW calculé
1167 aa, 127 kDa

MW observés:
128-140 kDa

Méthode de purification:

Purification par affinité contre l'antigène

Dilutions recommandées:

WB 1:1000-1:4000

IP 0.5-4.0 ug for IP and 1:500-1:1000 for WB

IHC 1:50-1:500

Applications

Applications testées:

IHC, IP, WB, ELISA

Demandes citées:

CoIP, IF, IHC, WB

Spécificité de l'espèce:

Humain, rat, souris

Espèces citées:

Humain, souris

Remarque-IHC: il est suggéré de démasquer l'antigène avec un tampon de TE buffer pH 9.0; (*) À défaut, 'le démasquage de l'antigène peut être 'effectué avec un tampon citrate pH 6,0.

Contrôles positifs:

WB : tissu cérébral de souris,

IP : cellules HeLa,

IHC : tissu de gliome humain,

Informations générales

ABL2 (Abelson tyrosine-protein kinase 2) is also named as ABL, ARG and belongs to the protein kinase superfamily. It is a membrane-anchored nonreceptor tyrosine kinase that is a novel mediator of SEMA3F-induced RhoA inactivation and collapsing activity and it has a role in cytoskeletal rearrangements by its C-terminal F-actin- and microtubule-binding sequences. ABL2 can be polyubiquitinated and the polyubiquitination of ABL2 leads to degradation. This protein has 9 isoforms produced by alternative splicing with the molecular weight from 114 kDa to 128 kDa. The antibody is specific to the others except the 60 kDa isoform of ABL2.

Publications notables

Autrice	Pubmed ID	Journal	Application
Xinkun Shen	34901556	Bioact Mater	IF
Siddhesh Aras	27913209	Biochim Biophys Acta	WB
Ze Zhang	34750518	Oncogene	WB, CoIP, IHC

Stockage

Stockage:

Stocker à -20°C. Stable pendant un an après l'expédition.

Tampon de stockage:

PBS avec azoture de sodium à 0,02 % et glycérol à 50 % pH 7,3

L'aliquotage n'est pas nécessaire pour le stockage à -20C

*** Les 20ul contiennent 0,1% de BSA.

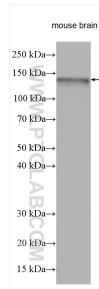
For technical support and original validation data for this product please contact:

T: 1 (888) 4PTGLAB (1-888-478-4522) (toll free in USA), or 1(312) 455-8498 (outside USA)

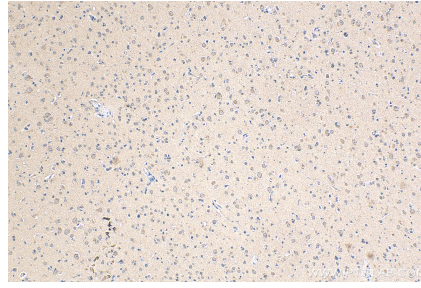
E: proteintech@ptglab.com
W: ptglab.com

This product is exclusively available under Proteintech Group brand and is not available to purchase from any other manufacturer.

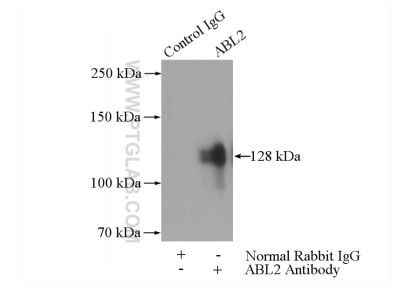
Données de validation sélectionnées



mouse brain tissue were subjected to SDS PAGE followed by western blot with 17693-1-AP (ABL2 antibody) at dilution of 1:2000 incubated at room temperature for 1.5 hours.



Immunohistochemical analysis of paraffin-embedded human gliomas tissue slide using 17693-1-AP (ABL2 antibody) at dilution of 1:200 (under 10x lens). Heat mediated antigen retrieval with Tris-EDTA buffer (pH 9.0).



IP Result of anti-ABL2 (IP:17693-1-AP, 4ug; Detection:17693-1-AP 1:500) with HeLa cells lysate 1200ug.