

À des fins de recherche uniquement

Anticorps Polyclonal de lapin anti-REV1



Numéro de catalogue:17703-1-AP

Informations de base

Numéro de catalogue: 17703-1-AP	Numéro d'acquisition GenBank: BC037734	Méthode de purification: Purification par affinité contre l'antigène
Taille: 150ul , Concentration: 600 µg/ml by Nanodrop and 440 µg/ml by Bradford method using BSA as the standard;	Identification du gène (NCBI): 51455	Dilutions recommandées: WB 1:500-1:2000 IF 1:50-1:500
Hôte: Lapin	Nom complet: REV1 homolog (S. cerevisiae)	
Isotype: IgG	MW calculé 1114 aa, 122 kDa	
Immunogen Catalog Number: AG11975	MW observés: 140-150 kDa	

Applications

Applications testées: IF, WB, ELISA	Contrôles positifs:
Spécificité de l'espèce: Humain, rat, souris	WB : cellules HeLa, IF : cellules U2OS,

Informations générales

Rev1 is a member of the TLS polymerase family and plays a key role in this mutagenic pathway, which allows the bypass of modified DNA bases and respectively, facilitates proliferation even in the presence of extensive DNA damage, such as during chemotherapy. Mutations in human REV1 have been detected in a minority of tumors, and single-nucleotide polymorphisms (SNPs) in the hREV1 gene have been linked to various types of human cancer.

Stockage

Stockage:
Stocker à -20°C. Stable pendant un an après l'expédition.
Tampon de stockage:
PBS avec azoture de sodium à 0,02 % et glycérol à 50 % pH 7,3
L'aliquotage n'est pas nécessaire pour le stockage à -20C

*** Les 20ul contiennent 0,1% de BSA.

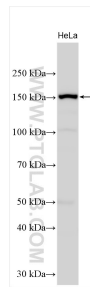
For technical support and original validation data for this product please contact:

T: 1 (888) 4PTGLAB (1-888-478-4522) (toll free in USA), or 1(312) 455-8498 (outside USA)

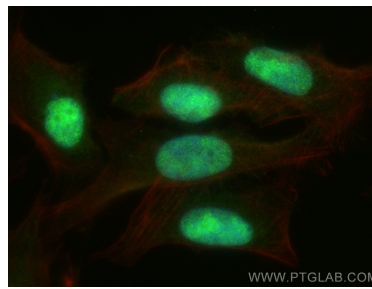
E: proteintech@ptglab.com
W: ptglab.com

This product is exclusively available under Proteintech Group brand and is not available to purchase from any other manufacturer.

Données de validation sélectionnées



HeLa cells were subjected to SDS PAGE followed by western blot with 17703-1-AP (REV1 antibody) at dilution of 1:1000 incubated at room temperature for 1.5 hours.



Immunofluorescent analysis of (4% PFA) fixed U2OS cells using REV1 antibody (17703-1-AP) at dilution of 1:200 and CoraLite®488-Conjugated AffiniPure Goat Anti-Rabbit IgG(H+L), CL594-phalloidin (red).