

À des fins de recherche uniquement

# Anticorps Polyclonal de lapin anti-ARL13B



Numéro de catalogue: 17711-1-AP

Phare

654 Publications

## Informations de base

Numéro de catalogue:

17711-1-AP

Taille:

150ul, Concentration: 900 µg/ml by Nanodrop;

Hôte:

Lapin

Isotype:

IgG

Immunogen Catalog Number:

AG12015

Numéro d'acquisition GenBank:

BC094725

Identification du gène (NCBI):

200894

Nom complet:

ADP-ribosylation factor-like 13B

MW calculé

48 kDa

MW observés:

40-48 kDa, 60 kDa

Méthode de purification:

Purification par affinité contre l'antigène

Dilutions recommandées:

WB 1:1000-1:6000

IP 0.5-4.0 µg for IP and 1:500-1:2000 for WB

IHC 1:50-1:500

IF 1:50-1:500

## Applications

Applications testées:

IF, IHC, IP, WB, ELISA

Demandes citées:

FC, IF, IHC, IP, WB

Spécificité de l'espèce:

canin, Humain, rat, souris

Espèces citées:

canin, Humain, poisson-zèbre, porc, poulet, rat, singe, souris, xénope

**Remarque-IHC: il est suggéré de démasquer l'antigène avec un tampon de TE buffer pH 9,0; (\*) À défaut, 'le démasquage de l'antigène peut être 'effectué avec un tampon citrate pH 6,0.**

Contrôles positifs:

WB : cellules L02, cellules NIH/3T3, tissu cérébral de souris, tissu hépatique de rat, tissu hépatique de souris, tissu rénal de rat, tissu rénal de souris

IP : cellules L02,

IHC : tissu cérébral de souris, tissu hépatique humain, tissu rénal humain, tissu testiculaire humain

IF : cellules MDCK, cellules hTERT-RPE1, cellules NIH3T3, fibroblastes embryonnaires de souris

## Informations générales

ARL13B, also named as ARL2L1, is a small ciliary G protein of the Ras superfamily. Localized in the cilia, it is required for cilium biogenesis and sonic hedgehog signaling. Defects in ARL13B are the cause of Joubert syndrome (JS) which is an autosomal recessive disorder characterized by a distinctive cerebellar malformation (PMID: 19906870). This antibody detects two specific bands at 60 kDa and 48 kDa. ARL13b is predicted to be a 48 kDa protein, and the 60 kDa band is likely to represent a modified form of ARL13b. ARL13B can be used to mark the cilia (PMID:22072986).

## Publications notables

Autrice	Pubmed ID	Journal	Application
Yi Chung Lim	26430510	Cilia	IF
Silvia Pietrobono	34638386	Cancers (Basel)	IF
Mandy Lokaj	26455799	Structure	IF

## Stockage

Stockage:

Stocker à -20°C. Stable pendant un an après l'expédition.

Tampon de stockage:

PBS avec azoture de sodium à 0,02 % et glycérol à 50 % pH 7,3

L'aliquotage n'est pas nécessaire pour le stockage à -20C

\*\*\* Les 20ul contiennent 0,1% de BSA.

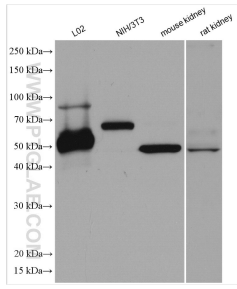
For technical support and original validation data for this product please contact:

T: 1 (888) 4PTGLAB (1-888-478-4522) (toll free in USA), or 1(312) 455-8498 (outside USA)

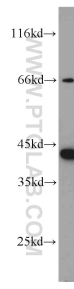
E: proteintech@ptglab.com  
W: ptglab.com

This product is exclusively available under Proteintech Group brand and is not available to purchase from any other manufacturer.

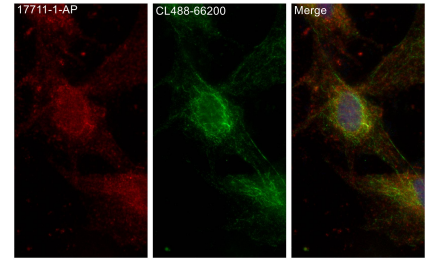
# Données de validation sélectionnées



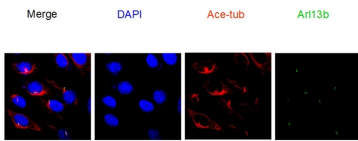
Various lysates were subjected to SDS PAGE followed by western blot with 17711-1-AP (ARL13B antibody) at dilution of 1:3000 incubated at room temperature for 1.5 hours.



mouse liver tissue were subjected to SDS PAGE followed by western blot with 17711-1-AP (ARL13B antibody) at dilution of 1:1000 incubated at room temperature for 1.5 hours.

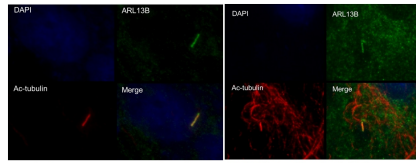


Immunofluorescent analysis of (4% PFA) fixed MDCK cells using ARL13B antibody (17711-1-AP) at dilution of 1:200 and CoraLite®594-Conjugated AffiniPure Goat Anti-Rabbit IgG(H+L).

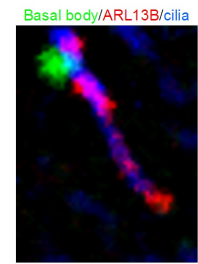


NIH3T3 cell line, 1:500

IF result of anti-ARL13B (17711-1-AP) in NIH3T3 cell by Dr. Sudipto.

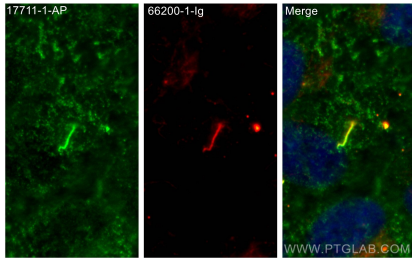


IF result of ARL13B antibody (17711-1-AP) in hTERT-RPE cell fixed with 4% PFA or Methanol.

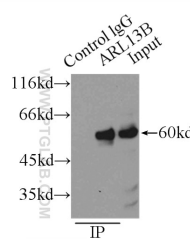


Mouse embryonic fibroblasts

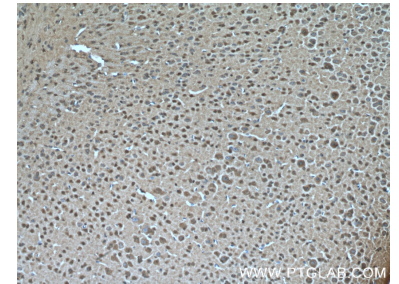
IF result from Dr. Corbit, Kevin. anti-ARL13B (17711-1-AP) mark the cilium of Mouse embryonic fibroblasts.



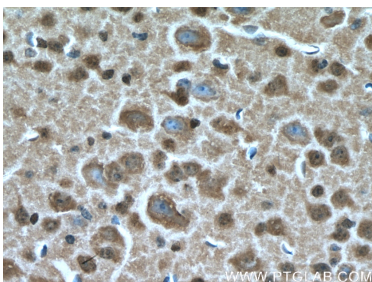
Immunofluorescent analysis of (4% PFA) fixed hTERT-RPE1 cells using ARL13B antibody (17711-1-AP) at dilution of 1:400 and CoraLite®488-Conjugated AffiniPure Goat Anti-Rabbit IgG(H+L), acetylated Tubulin(Lys40) antibody (66200-1-Ig, Clone: 7E5H8, red).



IP Result of anti-ARL13B (IP:17711-1-AP, 3ug; Detection:17711-1-AP 1:1000) with L02 cells lysate 2500ug.



Immunohistochemical analysis of paraffin-embedded mouse brain tissue slide using 17711-1-AP (ARL13B Antibody) at dilution of 1:200 (under 10x lens). Heat mediated antigen retrieval with Tris-EDTA buffer (pH 9.0).



Immunohistochemical analysis of paraffin-embedded mouse brain tissue slide using 17711-1-AP (ARL13B Antibody) at dilution of 1:200 (under 40x lens). Heat mediated antigen retrieval with Tris-EDTA buffer (pH 9.0).