

À des fins de recherche uniquement

Anticorps Polyclonal de lapin anti-SMARCC1



Numéro de catalogue: 17722-1-AP

3 Publications

Informations de base

Numéro de catalogue:

17722-1-AP

Taille:

150ul, Concentration: 600 µg/ml by Nanodrop and 300 µg/ml by Bradford method using BSA as the standard;

Hôte:

Lapin

Isotype:

IgG

Immunogen Catalog Number:

AG12109

Numéro d'acquisition GenBank:

BC050564

Identification du gène (NCBI):

6599

Nom complet:

SWI/SNF related, matrix associated, actin dependent regulator of chromatin, subfamily c, member 1

MW calculé

1105 aa, 123 kDa

MW observés:

155-160 kDa

Méthode de purification:

Purification par affinité contre l'antigène

Dilutions recommandées:

WB 1:2000-1:16000

IP 0.5-4.0 ug for IP and 1:500-1:1000 for WB

IHC 1:20-1:200

Applications

Applications testées:

IHC, IP, WB, ELISA

Demandes citées:

CoIP, IP, WB

Spécificité de l'espèce:

Humain, rat, souris

Espèces citées:

Humain, souris

Remarque-IHC: il est suggéré de démasquer l'antigène avec un tampon de TE buffer pH 9.0; (*) A défaut, le démasquage de l'antigène peut être effectué avec un tampon citrate pH 6,0.

Contrôles positifs:

WB : cellules K-562, cellules Jurkat, tissu cérébral de rat, tissu testiculaire de rat

IP : tissu cérébral de souris,

IHC : tissu rénal humain, tissu cérébral humain, tissu ovarien humain, tissu placentaire humain, tissu testiculaire humain

Informations générales

SMARCC1, also named as SWI/SNF complex 155 kDa subunit or BAF155, is a 1105 amino acid protein, which belongs to the SMARCC family. SMARCC1 is expressed in brain, heart, muscle, placenta, lung, liver, muscle, kidney and pancreas. SMARCC1 is involved in transcriptional activation and repression of select genes by chromatin remodeling. SMARCC1 may stimulate the ATPase activity of the catalytic subunit of the complex. SMARCC1 belongs to the neural progenitors-specific chromatin remodeling complex (npBAF complex) and the neuron-specific chromatin remodeling complex (nBAF complex). The calculated molecular weight of TCEA1 is 123 kDa, but modified SMARCC1 is about 155-160 kDa. (PMID: 24025402)

Publications notables

Autrice	Pubmed ID	Journal	Application
Xu Zhu	32459350	Nucleic Acids Res	CoIP
David McClellan	30988160	Mol Cell Biol	
Jinxu Li	34078620	Cancer Discov	WB,IP

Stockage

Stockage:

Stocker à -20°C. Stable pendant un an après l'expédition.

Tampon de stockage:

PBS avec azoture de sodium à 0,02 % et glycérol à 50 % pH 7,3

L'aliquotage n'est pas nécessaire pour le stockage à -20C

*** Les 20ul contiennent 0,1% de BSA.

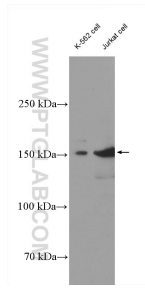
For technical support and original validation data for this product please contact:

T: 1 (888) 4PTGLAB (1-888-478-4522) (toll free in USA), or 1(312) 455-8498 (outside USA)

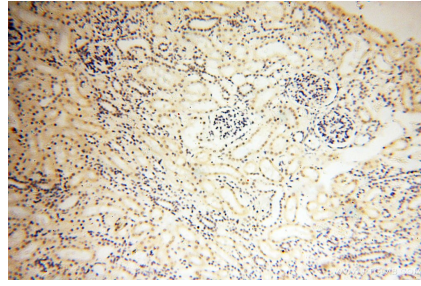
E: proteintech@ptglab.com
W: ptglab.com

This product is exclusively available under Proteintech Group brand and is not available to purchase from any other manufacturer.

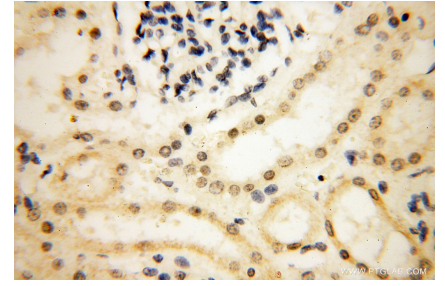
Données de validation sélectionnées



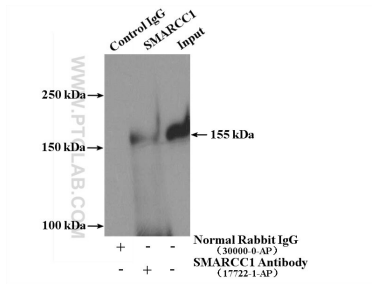
Various lysates were subjected to SDS PAGE followed by western blot with 17722-1-AP (SMARCC1 antibody) at dilution of 1:8000 incubated at room temperature for 1.5 hours.



Immunohistochemical analysis of paraffin-embedded human kidney using 17722-1-AP (SMARCC1 antibody) at dilution of 1:100 (under 10x lens).



Immunohistochemical analysis of paraffin-embedded human kidney using 17722-1-AP (SMARCC1 antibody) at dilution of 1:100 (under 40x lens).



IP Result of anti-SMARCC1 (IP:17722-1-AP, 4ug; Detection:17722-1-AP 1:600) with mouse brain tissue lysate 4000ug.