

À des fins de recherche uniquement

# Anticorps Polyclonal de lapin anti-BCL10



Numéro de catalogue: 17732-1-AP **Phare**

## Informations de base

<b>Numéro de catalogue:</b> 17732-1-AP	<b>Numéro d'acquisition GenBank:</b> BC053617	<b>Méthode de purification:</b> Purification par affinité contre l'antigène
<b>Taille:</b> 150ul, Concentration: 350 µg/ml by Nanodrop and 200 µg/ml by Bradford method using BSA as the standard;	<b>Identification du gène (NCBI):</b> 8915	<b>Dilutions recommandées:</b> WB 1:1000-1:4000 IHC 1:50-1:500
<b>Hôte:</b> Lapin	<b>Nom complet:</b> B-cell CLL/lymphoma 10	
<b>Isotype:</b> IgG	<b>MW calculé:</b> 233 aa, 26 kDa	
<b>Immunogen Catalog Number:</b> AG12170	<b>MW observés:</b> 30 kDa	

## Applications

<b>Applications testées:</b> FC, IHC, WB, ELISA	<b>Contrôles positifs:</b> WB : cellules Jurkat, cellules K-562 IHC : tissu de cancer du sein humain, tissu de lymphome humain
<b>Spécificité de l'espèce:</b> Humain, rat, souris	
<b>Remarque-IHC: il est suggéré de démasquer l'antigène avec un tampon de TE buffer pH 9,0; (*) À défaut, le démasquage de l'antigène peut être effectué avec un tampon citrate pH 6,0.</b>	

## Informations générales

The gene encoding BCL10 was identified by its recurrent translocation t(1;14)(p22;q32) in a case of mucosa-associated lymphoid tissue (MALT) lymphoma. BCL10 contains a caspase recruitment domain (CARD), and has been shown to induce apoptosis and to activate NF-kappaB.

## Stockage

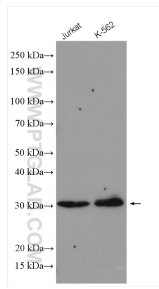
**Stockage:**  
Stocker à -20°C. Stable pendant un an après l'expédition.  
**Tampon de stockage:**  
PBS avec azoture de sodium à 0,02 % et glycérol à 50 % pH 7,3  
L'aliquotage n'est pas nécessaire pour le stockage à -20C

\*\*\* Les 20ul contiennent 0,1% de BSA.

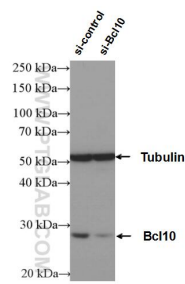
For technical support and original validation data for this product please contact:  
T: 1 (888) 4PTGLAB (1-888-478-4522) (toll free in USA), or 1(312) 455-8498 (outside USA)  
E: proteintech@ptglab.com  
W: ptglab.com

This product is exclusively available under Proteintech Group brand and is not available to purchase from any other manufacturer.

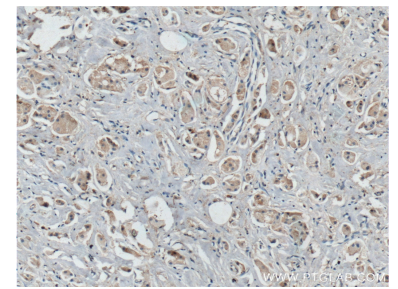
## Données de validation sélectionnées



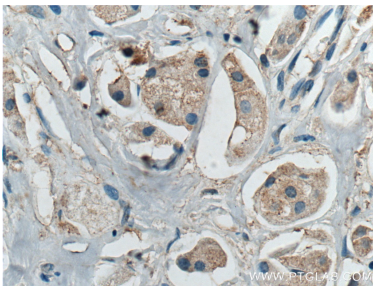
Various lysates were subjected to SDS PAGE followed by western blot with 17732-1-AP (BCL10 antibody) at dilution of 1:2000 incubated at room temperature for 1.5 hours.



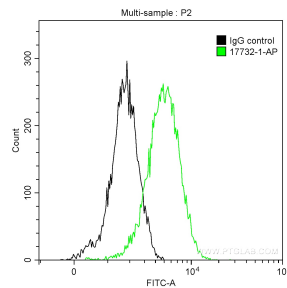
WB result of BCL10 antibody (17732-1-AP; 1:5000; incubated at room temperature for 1.5 hours) with sh-Control and sh-BCL10 transfected K-562 cells.



Immunohistochemical analysis of paraffin-embedded human breast cancer tissue slide using 17732-1-AP (BCL10 antibody) at dilution of 1:200 (under 10x lens. Heat mediated antigen retrieval with Tris-EDTA buffer (pH 9.0).



Immunohistochemical analysis of paraffin-embedded human breast cancer tissue slide using 17732-1-AP (BCL10 antibody) at dilution of 1:200 (under 40x lens. Heat mediated antigen retrieval with Tris-EDTA buffer (pH 9.0).



$1 \times 10^6$  Jurkat cells were intracellularly stained with 0.5 ug Anti-Human BCL10 (17732-1-AP) and CoraLite<sup>®</sup>488-Conjugated AffiniPure Goat Anti-Rabbit IgG(H+L) at dilution 1:1000 (green), and 0.5 ug Control Antibody. Cells were fixed with 90% MeOH .