

À des fins de recherche uniquement

Anticorps Polyclonal de lapin anti-PURA



Numéro de catalogue: 17733-1-AP

Phare

6 Publications

Informations de base

Numéro de catalogue: 17733-1-AP	Numéro d'acquisition GenBank: BC036087	Méthode de purification: Purification par affinité contre l'antigène
Taille: 150ul , Concentration: 800 µg/ml by Nanodrop;	Identification du gène (NCBI): 5813	Dilutions recommandées: WB 1:1000-1:6000
Hôte: Lapin	Nom complet: purine-rich element binding protein A	
Isotype: IgG	MW calculé: 322 aa, 35 kDa	
Immunogen Catalog Number: AG12173	MW observés: 35-40 kDa	

Applications

Applications testées: WB, ELISA	Contrôles positifs: WB : cellules A549, cellules HeLa, cellules HepG2, cellules MG U-87
Demandes citées: IF, IHC, IP, RIP, WB	
Spécificité de l'espèce: Humain, rat, souris	
Espèces citées: Humain, rat	

Informations générales

PURA, also named as Transcriptional activator protein Pur-alpha, is a 322 amino acid protein, which belongs to the PUR DNA-binding protein family and can form homodimer or heterodimer with PURB and heterotrimer with PURB and YBX1/Y-box protein 1. PURA is a probable transcription activator that specifically binds the purine-rich single strand of the PUR element located upstream of the MYC gene and may play a role in the initiation of DNA replication and in recombination.

Publications notables

Autrice	Pubmed ID	Journal	Application
Yanbin Wang	30392635	Acta Histochem	WB
Ruibing Chen	33751109	Nucleic Acids Res	RIP
Belin Sophie	31379499	Front Mol Neurosci	WB

Stockage

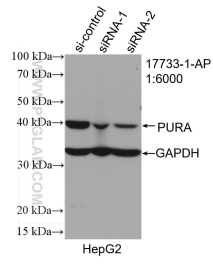
Stockage:
Stocker à -20°C. Stable pendant un an après l'expédition.
Tampon de stockage:
PBS avec azoture de sodium à 0,02 % et glycérol à 50 % pH 7,3
L'aliquotage n'est pas nécessaire pour le stockage à -20C

*** Les 20ul contiennent 0,1% de BSA.

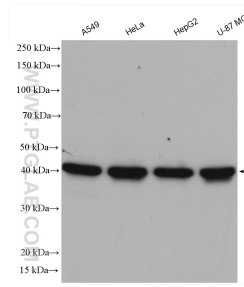
For technical support and original validation data for this product please contact:
T: 1 (888) 4PTGLAB (1-888-478-4522) (toll free in USA), or 1(312) 455-8498 (outside USA)
E: proteintech@ptglab.com
W: ptglab.com

This product is exclusively available under Proteintech Group brand and is not available to purchase from any other manufacturer.

Données de validation sélectionnées



WB result of PURA antibody (17733-1-AP; 1:6000; incubated at room temperature for 1.5 hours) with sh-Control and sh-PURA transfected HepG2 cells.



Various lysates were subjected to SDS PAGE followed by western blot with 17733-1-AP (PURA antibody) at dilution of 1:3000 incubated at room temperature for 1.5 hours.