

À des fins de recherche uniquement

# Anticorps Polyclonal de lapin anti-CORO1A



Numéro de catalogue: 17760-1-AP

4 Publications

## Informations de base

Numéro de catalogue:  
17760-1-AP

Taille:  
150ul, Concentration: 350 µg/ml by Nanodrop and 220 µg/ml by Bradford method using BSA as the standard;

Hôte:  
Lapin

Isotype:  
IgG

Immunogen Catalog Number:  
AG12139

Numéro d'acquisition GenBank:  
BC110374

Identification du gène (NCBI):  
11151

Nom complet:  
coronin, actin binding protein, 1A

MW calculé  
461 aa, 51 kDa

MW observés:  
57 kDa

Méthode de purification:  
Purification par affinité contre l'antigène

Dilutions recommandées:  
WB 1:500-1:1000  
IP 0.5-4.0 ug for IP and 1:500-1:2000 for WB  
IF 1:50-1:500

## Applications

Applications testées:  
FC, IF, IP, WB, ELISA

Demandes citées:  
WB

Spécificité de l'espèce:  
Humain, rat, souris

Espèces citées:  
Humain, rat

Contrôles positifs:

WB : tissu cérébral de rat, cellules HL-60, cellules Jurkat, tissu splénique de rat, tissu splénique de souris

IP : tissu splénique de souris,

IF : tissu splénique de souris, tissu de côlon de souris

## Informations générales

### Publications notables

Autrice	Pubmed ID	Journal	Application
Feng Guo	25302788	PLoS One	WB
Fuli Min	35526384	Int Immunopharmacol	WB
Hui Song	34926519	Front Med (Lausanne)	WB

## Stockage

Stockage:

Stocker à -20°C. Stable pendant un an après l'expédition.

Tampon de stockage:

PBS avec azoture de sodium à 0,02 % et glycérol à 50 % pH 7,3

L'aliquotage n'est pas nécessaire pour le stockage à -20C

\*\*\* Les 20ul contiennent 0,1% de BSA.

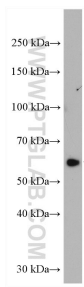
For technical support and original validation data for this product please contact:

T: 1 (888) 4PTGLAB (1-888-478-4522) (toll free in USA), or 1(312) 455-8498 (outside USA)

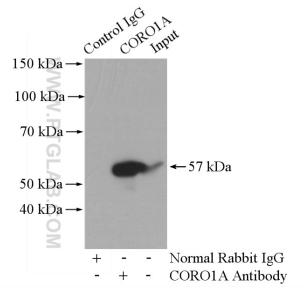
E: proteintech@ptglab.com  
W: ptglab.com

This product is exclusively available under Proteintech Group brand and is not available to purchase from any other manufacturer.

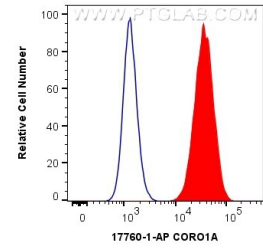
## Données de validation sélectionnées



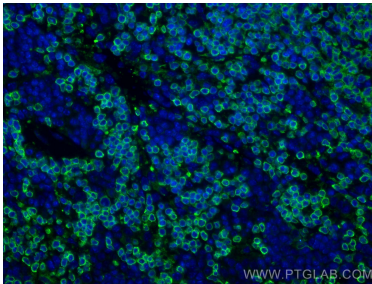
rat brain tissue were subjected to SDS PAGE followed by western blot with 17760-1-AP (CORO1A antibody) at dilution of 1:500 incubated at room temperature for 1.5 hours.



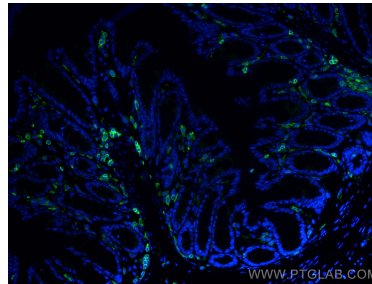
IP Result of anti-CORO1A (IP:17760-1-AP, 4ug; Detection:17760-1-AP 1:1000) with mouse spleen tissue lysate 4800ug.



1X10<sup>6</sup> Jurkat cells were intracellularly stained with 0.4 ug Anti-Human CORO1A (17760-1-AP) and CoraLite®488-Conjugated AffiniPure Goat Anti-Rabbit IgG(H+L) at dilution 1:1000 (red), or 0.4 ug Isotype Control. Cells were fixed with 4% PFA and permeabilized with Flow Cytometry Perm Buffer (PF00011-C).



Immunofluorescent analysis of (4% PFA) fixed mouse spleen tissue using CORO1A antibody (17760-1-AP) at dilution of 1:200 and CoraLite®488-Conjugated AffiniPure Goat Anti-Rabbit IgG(H+L).



Immunofluorescent analysis of (4% PFA) fixed mouse colon tissue using CORO1A antibody (17760-1-AP) at dilution of 1:200 and CoraLite®488-Conjugated AffiniPure Goat Anti-Rabbit IgG(H+L).