

À des fins de recherche uniquement

Anticorps Polyclonal de lapin anti-RAB27A



Numéro de catalogue: 17817-1-AP

Phare

48 Publications

Informations de base

Numéro de catalogue:
17817-1-AP

Taille:
150ul, Concentration: 350 µg/ml by
Nanodrop;

Hôte:
Lapin

Isotype:
IgG

Immunogen Catalog Number:
AG12136

Numéro d'acquisition GenBank:
BC107680

Identification du gène (NCBI):
5873

Nom complet:
RAB27A, member RAS oncogene
family

MW calculé
221 aa, 25 kDa

MW observés:
25-27 kDa

Méthode de purification:
Purification par affinité contre
l'antigène

Dilutions recommandées:
WB 1:1000-1:4000
IP 0.5-4.0 µg for IP and 1:500-1:2000
for WB
IHC 1:50-1:500

Applications

Applications testées:
IHC, IP, WB, ELISA

Demandes citées:
IF, IHC, WB

Spécificité de l'espèce:
Humain

Espèces citées:
canin, Humain, porc, poulet, rat

Remarque-IHC: il est suggéré de démasquer l'antigène avec un tampon de TE buffer pH 9,0; (*) À défaut, le démasquage de l'antigène peut être effectué avec un tampon citrate pH 6,0.

Contrôles positifs:

WB : cellules HL-60, cellules HeLa apoptosées, cellules Jurkat, cellules K-562, cellules L02, tissu hépatique humain

IP : cellules K-562,

IHC : tissu de mélanome malin humain, tissu d'estomac humain

Informations générales

Rab27A is a member of a large family of Ras-related small GTPases. The protein is membrane-bound and may be involved in protein transport and small GTPase mediated signal transduction. Recent studies suggest that Rab27A is associated with melanosomes in pigmented cells and regulates melanosome transport via its interaction with actin-based cellular motors such as myosin Va and myosin VIIa. RAB27A is also required for regulated secretion in cytotoxic T lymphocytes. Rab27A is implicated in several diseases, including Griscelli syndrome, choroideremia, and the Hermansky-Pudlak syndrome mouse model, gunmetal.

Publications notables

Autrice	Pubmed ID	Journal	Application
Jian Guo	32989094	J Immunol	WB
Xueqiang Peng	32949647	Biochim Biophys Acta Mol Cell Res	WB
Yuxuan Fu	28910400	PLoS Pathog	WB

Stockage

Stockage:

Stocker à -20°C. Stable pendant un an après l'expédition.

Tampon de stockage:

PBS avec azoture de sodium à 0,02 % et glycérol à 50 % pH 7,3

L'aliquotage n'est pas nécessaire pour le stockage à -20C

*** Les 20ul contiennent 0,1% de BSA.

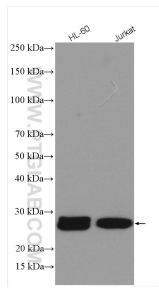
For technical support and original validation data for this product please contact:

T: 1 (888) 4PTGLAB (1-888-478-4522) (toll free in USA), or 1(312) 455-8498 (outside USA)

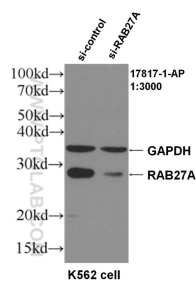
E: proteintech@ptglab.com
W: ptglab.com

This product is exclusively available under Proteintech Group brand and is not available to purchase from any other manufacturer.

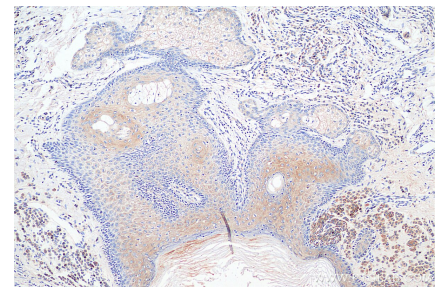
Données de validation sélectionnées



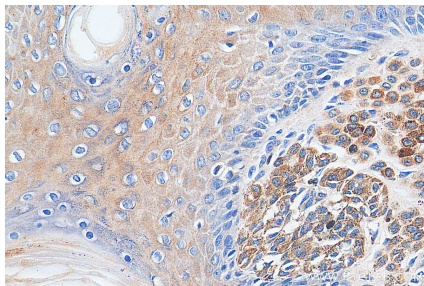
Various lysates were subjected to SDS PAGE followed by western blot with 17817-1-AP (RAB27A antibody) at dilution of 1:2000 incubated at room temperature for 1.5 hours.



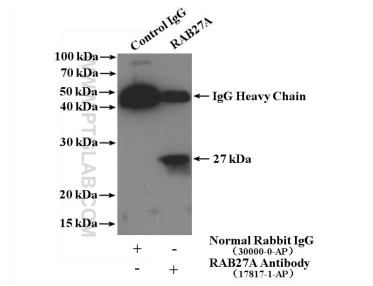
WB result of RAB27A antibody (17817-1-AP, 1:3000) with si-Control and si-RAB27A transfected K562 cells.



Immunohistochemical analysis of paraffin-embedded human malignant melanoma tissue slide using 17817-1-AP (RAB27A antibody) at dilution of 1:200 (under 10x lens).



Immunohistochemical analysis of paraffin-embedded human malignant melanoma tissue slide using 17817-1-AP (RAB27A antibody) at dilution of 1:200 (under 40x lens).



IP result of anti-RAB27A (IP:17817-1-AP, 4ug; Detection:17817-1-AP 1:1000) with K-562 cells lysate 2760 ug.