

À des fins de recherche uniquement

# Anticorps Polyclonal de lapin anti-USP21



Numéro de catalogue: 17856-1-AP

Phare

9 Publications

## Informations de base

Numéro de catalogue:

17856-1-AP

Taille:

150ul, Concentration: 500 µg/ml by Nanodrop and 393 µg/ml by Bradford method using BSA as the standard;

Hôte:

Lapin

Isotype:

IgG

Immunogen Catalog Number:

AG12316

Numéro d'acquisition GenBank:

BC090946

Identification du gène (NCBI):

27005

Nom complet:

ubiquitin specific peptidase 21

MW calculé

565 aa, 63 kDa

MW observés:

63 kDa

Méthode de purification:

Purification par affinité contre l'antigène

Dilutions recommandées:

WB 1:1000-1:4000

IHC 1:50-1:500

IF 1:50-1:500

## Applications

Applications testées:

IF, IHC, WB, ELISA

Demandes citées:

CoIP, IHC, RIP, WB

Spécificité de l'espèce:

Humain, souris

Espèces citées:

Humain, souris

**Remarque-IHC: il est suggéré de démasquer l'antigène avec un tampon de TE buffer pH 9,0; (\*) À défaut, 'le démasquage de l'antigène peut être 'effectué avec un tampon citrate pH 6,0.**

Contrôles positifs:

WB : cellules A549, cellules HeLa, cellules HepG2, cellules HuH-7, cellules RAW 264.7, protéine recombinante

IHC : tissu de cancer du sein humain, tissu cardiaque de souris, tissu pancréatique humain

IF : cellules RAW 264.7,

## Informations générales

USP21(Ubiquitin carboxyl-terminal hydrolase 21) is also named as USP23. The USPs belong to a subclass of the protein-deubiquitinating enzyme (DUB) superfamily that are categorized into five subclasses based on their ubiquitin-protease domains in the human genome and have been shown to be involved in a broad range of biological activities(PMID:19910467). USP21 is expressed at different levels in the tissues examined. The highest level of USP21 expression is found in the heart, pancreas, and skeletal muscle. USP21 messages could also be detected in the brain, placenta, liver, and kidney but are very low in the Lung through the northern blot(PMID:10799498).

## Publications notables

Autrice	Pubmed ID	Journal	Application
Fu-Shun Hsu	34769137	Int J Mol Sci	IHC
Qing-Dong Wang	36285444	Pathol Int	WB, CoIP
Zikou Liu	34698396	EMBO J	WB

## Stockage

Stockage:

Stocker à -20°C. Stable pendant un an après l'expédition.

Tampon de stockage:

PBS avec azoture de sodium à 0,02 % et glycérol à 50 % pH 7,3

L'aliquotage n'est pas nécessaire pour le stockage à -20C

\*\*\* Les 20ul contiennent 0,1% de BSA.

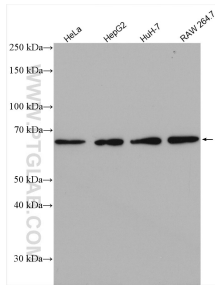
For technical support and original validation data for this product please contact:

T: 1 (888) 4PTGLAB (1-888-478-4522) (toll free in USA), or 1(312) 455-8498 (outside USA)

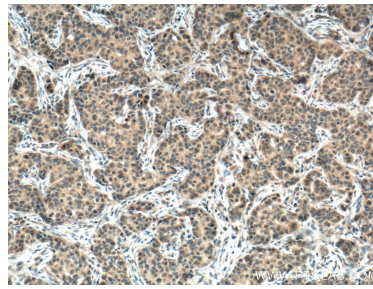
E: proteintech@ptglab.com  
W: ptglab.com

This product is exclusively available under Proteintech Group brand and is not available to purchase from any other manufacturer.

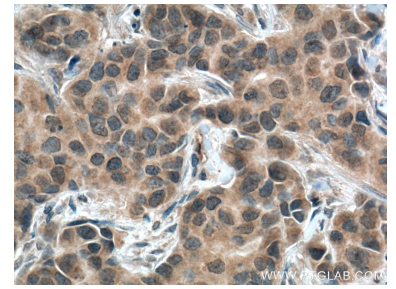
## Données de validation sélectionnées



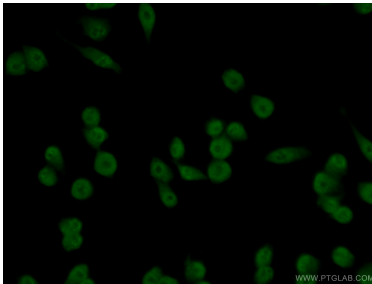
Various lysates were subjected to SDS PAGE followed by western blot with 17856-1-AP (USP21 antibody) at dilution of 1:300 incubated at room temperature for 1.5 hours.



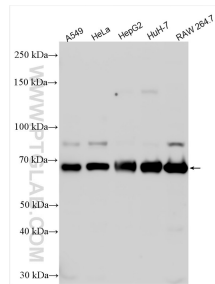
Immunohistochemical analysis of paraffin-embedded human breast cancer tissue slide using 17856-1-AP (USP21 antibody) at dilution of 1:200 (under 10x lens. Heat mediated antigen retrieval with Tris-EDTA buffer (pH 9.0)).



Immunohistochemical analysis of paraffin-embedded human breast cancer tissue slide using 17856-1-AP (USP21 antibody) at dilution of 1:200 (under 40x lens. Heat mediated antigen retrieval with Tris-EDTA buffer (pH 9.0)).



Immunofluorescent analysis of (4% PFA) fixed RAW 264.7 cells using 17856-1-AP (USP21 antibody) at dilution of 1:50 and Alexa Fluor 488-conjugated AffiniPure Goat Anti-Rabbit IgG(H+L).



Various lysates were subjected to SDS PAGE followed by western blot with 17856-1-AP (USP21 antibody) at dilution of 1:2000 incubated at room temperature for 1.5 hours.