

À des fins de recherche uniquement

Anticorps Polyclonal de lapin anti-STS



Numéro de catalogue: 17870-1-AP

Phare

5 Publications

Informations de base

Numéro de catalogue: 17870-1-AP	Numéro d'acquisition GenBank: BC075030	Méthode de purification: Purification par affinité contre l'antigène
Taille: 150ul , Concentration: 450 µg/ml by Nanodrop and 313 µg/ml by Bradford method using BSA as the standard;	Identification du gène (NCBI): 412	Dilutions recommandées: WB 1:500-1:2000 IHC 1:20-1:200 IF 1:50-1:500
Hôte: Lapin	Nom complet: steroid sulfatase (microsomal), isozyme S	
Isotype: IgG	MW calculé 583 aa, 65 kDa	
Immunogen Catalog Number: AG12353	MW observés: 63-65 kDa	

Applications

Applications testées:

IF, IHC, WB, ELISA

Demandes citées:

IF, WB

Spécificité de l'espèce:

Humain, rat, souris

Espèces citées:

Humain, rat, souris

Remarque-IHC: il est suggéré de démasquer l'antigène avec un tampon de TE buffer pH 9,0; (*) A défaut, 'le démasquage de l'antigène peut être 'effectué avec un tampon citrate pH 6,0.

Contrôles positifs:

WB : cellules MCF7, tissu placentaire humain

IHC : tissu placentaire humain, tissu cutané humain, tissu d'hystéromyome humain, tissu ovarien humain, tissu pulmonaire humain, tissu rénal humain

IF : cellules HeLa,

Informations générales

STS (Steroid sulfatase) is also named as ASC (arylsulfatase C), ARSC1 and belongs to the sulfatase family. It is expressed in human liver and is responsible for the hydrolysis of many estrogen and hydroxysteroid sulfates, including dehydroepiandrosterone (DHEA)-sulfate and β -estradiol(E2)-3-sulfate (PMID:19589875). This enzyme has also been documented to occur in many other tissues, including skin, lung, ovary, and adrenal gland. The estimated molecular mass of expressed human STS is 63-85 kDa which may represent different levels of glycosylation in the different tissues, as STS is known to be a glycoprotein and the full length protein has a signal peptide with 21 amino acids (PMID:17604157).

Publications notables

Autrice	Pubmed ID	Journal	Application
Cameron M Armstrong	32928794	Clin Cancer Res	WB
Jiansha Li	26478095	Sci Rep	WB
Barbara Licznarska	27854074	Mol Cell Biochem	WB

Stockage

Stockage:

Stocker à -20°C. Stable pendant un an après l'expédition.

Tampon de stockage:

PBS avec azoture de sodium à 0,02 % et glycérol à 50 % pH 7,3

L'aliquotage n'est pas nécessaire pour le stockage à -20C

*** Les 20ul contiennent 0,1% de BSA.

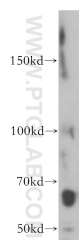
For technical support and original validation data for this product please contact:

T: 1 (888) 4PTGLAB (1-888-478-4522) (toll free in USA), or 1(312) 455-8498 (outside USA)

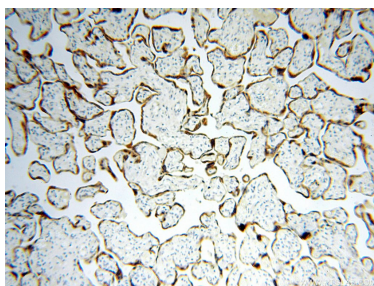
E: proteintech@ptglab.com
W: ptglab.com

This product is exclusively available under Proteintech Group brand and is not available to purchase from any other manufacturer.

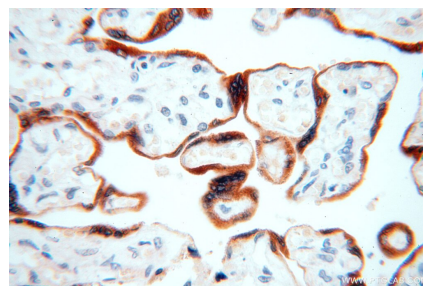
Données de validation sélectionnées



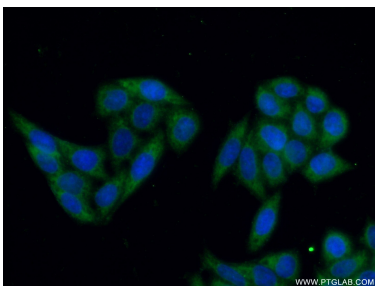
MCF7 cells were subjected to SDS PAGE followed by western blot with 17870-1-AP (STS antibody) at dilution of 1:500 incubated at room temperature for 1.5 hours.



Immunohistochemical analysis of paraffin-embedded human placenta using 17870-1-AP (STS antibody) at dilution of 1:100 (under 10x lens).



Immunohistochemical analysis of paraffin-embedded human placenta using 17870-1-AP (STS antibody) at dilution of 1:100 (under 40x lens).



Immunofluorescent analysis of (-20°C Ethanol) fixed HeLa cells using 17870-1-AP (STS antibody) at dilution of 1:50 and Alexa Fluor 488-conjugated AffiniPure Goat Anti-Rabbit IgG(H+L).