

À des fins de recherche uniquement

Anticorps Polyclonal de lapin anti-MPV17L



Numéro de catalogue: 17884-1-AP

1 Publications

Informations de base

Numéro de catalogue: 17884-1-AP	Numéro d'acquisition GenBank: BC061514	Méthode de purification: Purification par affinité contre l'antigène
Taille: 150ul , Concentration: 240 µg/ml by Nanodrop and 160 µg/ml by Bradford method using BSA as the standard;	Identification du gène (NCBI): 255027	Dilutions recommandées: WB 1:500-1:2000
Hôte: Lapin	Nom complet: MPV17 mitochondrial membrane protein-like	
Isotype: IgG	MW calculé: 147 aa, 17 kDa	
Immunogen Catalog Number: AG11935	MW observés: 10 kDa	

Applications

Applications testées: WB, ELISA	Contrôles positifs: WB : tissu rénal de souris, cellules HEK-293
Demandes citées: WB	
Spécificité de l'espèce: Humain, souris	
Espèces citées: souris	

Informations générales

MpV17 mitochondrial membrane protein-like protein (MPV17L) is a protein with high sequence homology with MPV17. MPV17L was initially identified as a peroxisomal membrane protein which is involved in the development of early-onset of glomerulosclerosis. But now its localization is still controversial. Human MPV17L has two variants ubiquitously expressed in human tissues, but with different cellular localizations, and plays roles in regulating expression of antioxidant enzymes. Catlog#17884-1-AP is a rabbit polyclonal antibody raised against the full-length of human MPV17L.

Publications notables

Autrice	Pubmed ID	Journal	Application
Cong Han	33383113	J Ethnopharmacol	WB

Stockage

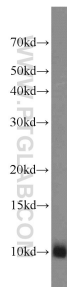
Stockage:
Stocker à -20°C. Stable pendant un an après l'expédition.
Tampon de stockage:
PBS avec azoture de sodium à 0,02 % et glycérol à 50 % pH 7,3
L'aliquotage n'est pas nécessaire pour le stockage à -20C

*** Les 20ul contiennent 0,1% de BSA.

For technical support and original validation data for this product please contact:
T: 1 (888) 4PTGLAB (1-888-478-4522) (toll free in USA), or 1(312) 455-8498 (outside USA)
E: proteintech@ptglab.com
W: ptglab.com

This product is exclusively available under Proteintech Group brand and is not available to purchase from any other manufacturer.

Données de validation sélectionnées



mouse kidney tissue were subjected to SDS PAGE followed by western blot with 17884-1-AP (MPV17L antibody) at dilution of 1:1000 incubated at room temperature for 1.5 hours.