

À des fins de recherche uniquement

Anticorps Polyclonal de lapin anti-SLTM



Numéro de catalogue: 17889-1-AP

Informations de base

Numéro de catalogue: 17889-1-AP	Numéro d'acquisition GenBank: BC046119	Méthode de purification: Purification par affinité contre l'antigène
Taille: 150ul, Concentration: 550 µg/ml by Nanodrop and 293 µg/ml by Bradford method using BSA as the standard;	Identification du gène (NCBI): 79811	Dilutions recommandées: WB 1:500-1:2000 IF 1:10-1:100
Hôte: Lapin	Nom complet: SAFB-like, transcription modulator	
Isotype: IgG	MW calculé 478aa,57 kDa; 1034aa,117 kDa	
Immunogen Catalog Number: AG12060	MW observés: 135-140 kDa	

Applications

Applications testées: IF, WB, ELISA	Contrôles positifs: WB : tissu cérébral de souris, cellules HeLa
Spécificité de l'espèce: Humain, rat, souris	IF : cellules HepG2,

Informations générales

SLTM, also named as Modulator of estrogen-induced transcription, is a 1034 amino acid protein, which localizes in the nucleus. When it is overexpressed, SLTM acts as a general inhibitor of transcription that eventually leads to apoptosis. The calculated molecular weight of SLTM is 117 kDa, but modified SLTM is about 135-140 kDa.

Stockage

Stockage:
Stocker à -20°C. Stable pendant un an après l'expédition.
Tampon de stockage:
PBS avec azoture de sodium à 0,02 % et glycérol à 50 % pH 7,3
L'aliquotage n'est pas nécessaire pour le stockage à -20C

***** Les 20ul contiennent 0,1% de BSA.**

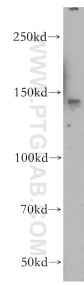
For technical support and original validation data for this product please contact:

T: 1 (888) 4PTGLAB (1-888-478-4522) (toll free in USA), or 1(312) 455-8498 (outside USA)

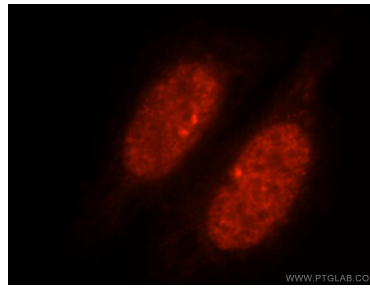
E: proteintech@ptglab.com
W: ptglab.com

This product is exclusively available under Proteintech Group brand and is not available to purchase from any other manufacturer.

Données de validation sélectionnées



mouse brain tissue were subjected to SDS PAGE followed by western blot with 17889-1-AP (SLTM antibody) at dilution of 1:500 incubated at room temperature for 1.5 hours.



Immunofluorescent analysis of HepG2 cells, using SLTM antibody 17889-1-AP at 1:25 dilution and Rhodamine-labeled goat anti-rabbit IgG (red).