

À des fins de recherche uniquement

# Anticorps Polyclonal de lapin anti-BHLHE40



Numéro de catalogue: 17895-1-AP

Phare

9 Publications

## Informations de base

Numéro de catalogue:  
17895-1-AP

Taille:  
150ul, Concentration: 750 µg/ml by Nanodrop and 347 µg/ml by Bradford method using BSA as the standard;

Hôte:  
Lapin

Isotype:  
IgG

Immunogen Catalog Number:  
AG12236

Numéro d'acquisition GenBank:  
BC082238

Identification du gène (NCBI):  
8553

Nom complet:  
basic helix-loop-helix family, member e40

MW calculé  
412 aa, 46 kDa

MW observés:  
46-50 kDa

Méthode de purification:  
Purification par affinité contre l'antigène

Dilutions recommandées:  
WB 1:1000-1:4000  
IP 0.5-4.0 ug for IP and 1:500-1:2000 for WB  
IHC 1:50-1:500

## Applications

Applications testées:  
IHC, IP, WB, ELISA

Demandes citées:  
IF, IHC, IP, WB

Spécificité de l'espèce:  
Humain, rat, souris

Espèces citées:  
Humain, rat, souris

**Remarque-IHC: il est suggéré de démasquer l'antigène avec un tampon de TE buffer pH 9,0; (\*) À défaut, 'le démasquage de l'antigène peut être 'effectué avec un tampon citrate pH 6,0.**

Contrôles positifs:

WB : cellules C2C12, cellules HeLa, cellules MDA-MB-231

IP : cellules HeLa,

IHC : tissu de cancer de l'endomètre humain,

## Informations générales

BHLHE40 (Basic Helix-Loop-Helix Family Member E40), also known as BHLHB2, STRA13, DEC1, or SHARP2, is a member of the basic helix-loop-helix (bHLH) protein family, a large superfamily of transcriptional regulators expressed in many organisms. BHLHE40 is known to regulate a wide variety of essential cellular processes, including cell cycle, cellular proliferation, programmed cell death, cellular development and differentiation, as well as circadian rhythms (PMID: 34551158). It is reported that BHLHE40 is overexpressed in gastric, breast, and brain tumors; and downregulated in colorectal, esophageal, pancreatic and lung cancer (PMID: 32577154).

## Publications notables

Autrice	Pubmed ID	Journal	Application
Kai-Wen Ren	36304536	Front Cardiovasc Med	WB,IHC
Shuang Li	36194366	J Physiol Biochem	IP,WB,IF
Dan-Dan Feng	34917665	Front Cardiovasc Med	WB,IF

## Stockage

Stockage:

Stocker à -20°C. Stable pendant un an après l'expédition.

Tampon de stockage:

PBS avec azoture de sodium à 0,02 % et glycérol à 50 % pH 7,3

L'aliquotage n'est pas nécessaire pour le stockage à -20C

\*\*\* Les 20ul contiennent 0,1% de BSA.

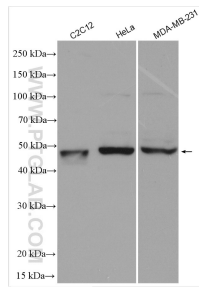
For technical support and original validation data for this product please contact:

T: 1 (888) 4PTGLAB (1-888-478-4522) (toll free in USA), or 1(312) 455-8498 (outside USA)

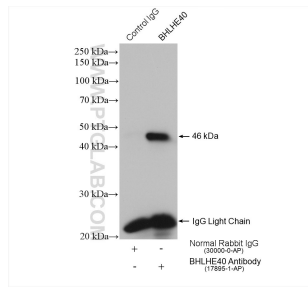
E: proteintech@ptglab.com  
W: ptglab.com

This product is exclusively available under Proteintech Group brand and is not available to purchase from any other manufacturer.

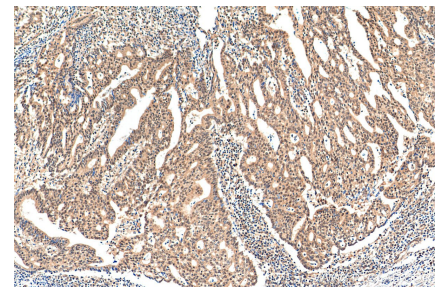
## Données de validation sélectionnées



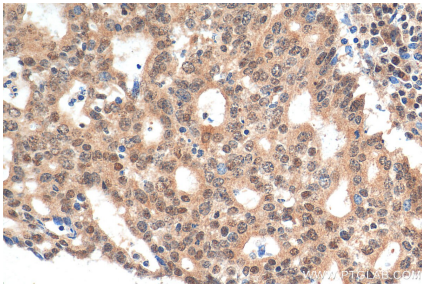
Various lysates were subjected to SDS PAGE followed by western blot with 17895-1-AP (BHLHE40 antibody) at dilution of 1:2000 incubated at room temperature for 1.5 hours.



IP result of anti-BHLHE40(IP:17895-1-AP, 4ug; Detection:17895-1-AP 1:1000) with HeLa cells lysate 1800 ug.



Immunohistochemical analysis of paraffin-embedded human endometrial cancer tissue slide using 17895-1-AP (BHLHE40 antibody) at dilution of 1:200 (under 10x lens). Heat mediated antigen retrieval with Tris-EDTA buffer (pH 9.0).



Immunohistochemical analysis of paraffin-embedded human endometrial cancer tissue slide using 17895-1-AP (BHLHE40 antibody) at dilution of 1:200 (under 40x lens). Heat mediated antigen retrieval with Tris-EDTA buffer (pH 9.0).