

À des fins de recherche uniquement

Anticorps Polyclonal de lapin anti-SEC31A



Numéro de catalogue: 17913-1-AP

Phare

9 Publications

Informations de base

Numéro de catalogue:
17913-1-AP

Taille:
150ul, Concentration: 350 µg/ml by Nanodrop and 333 µg/ml by Bradford method using BSA as the standard;

Hôte:
Lapin

Isotype:
IgG

Immunogen Catalog Number:
AG12314

Numéro d'acquisition GenBank:
BC084583

Identification du gène (NCBI):
22872

Nom complet:
SEC31 homolog A (*S. cerevisiae*)

MW calculé
1220 aa, 133 kDa

MW observés:
133 kDa

Méthode de purification:
Purification par affinité contre l'antigène

Dilutions recommandées:
WB 1:500-1:3000
IP 0.5-4.0 ug for IP and 1:500-1:1000 for WB
IF 1:200-1:800

Applications

Applications testées:
IF, IP, WB, ELISA

Demandes citées:
IF, IP, WB

Spécificité de l'espèce:
Humain

Espèces citées:
Humain, rat, souris

Contrôles positifs:

WB : cellules HeLa, cellules Jurkat

IP : cellules HeLa,

IF : cellules HeLa,

Informations générales

COP1-coated vesicles mediate anterograde transport from the ER to the Golgi apparatus. COP1 is composed of three parts: two coat protein complexes (Sec23/24 complex and Sec13/31 complex) and one small GTP-binding protein, Sar1 (PMID: 9568718). Sec31 subunit of the coat complex has been shown to be essential for vesicle formation and ER-Golgi transport (PMID: 10788476). Two mammalian homologues of yeast sec31p, Sec31A and Sec31B, share about 40% amino acid identity. Sec31A transcripts are ubiquitously and abundantly expressed.

Publications notables

Autrice	Pubmed ID	Journal	Application
Mengyue You	36252341	Redox Biol	WB
Lingyun Long	34795452	Nature	IP, WB
Tatiana Leiva-Rodríguez	29799519	Cell Death Dis	WB

Stockage

Stockage:

Stocker à -20°C. Stable pendant un an après l'expédition.

Tampon de stockage:

PBS avec azoture de sodium à 0,02 % et glycérol à 50 % pH 7,3

L'aliquotage n'est pas nécessaire pour le stockage à -20C

*** Les 20ul contiennent 0,1% de BSA.

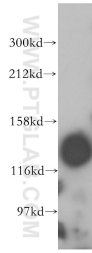
For technical support and original validation data for this product please contact:

T: 1 (888) 4PTGLAB (1-888-478-4522) (toll free in USA), or 1(312) 455-8498 (outside USA)

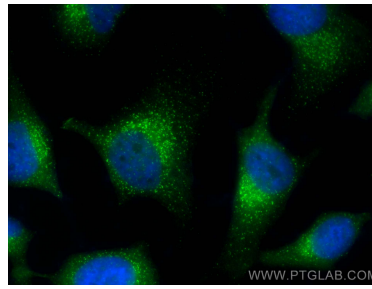
E: proteintech@ptglab.com
W: ptglab.com

This product is exclusively available under Proteintech Group brand and is not available to purchase from any other manufacturer.

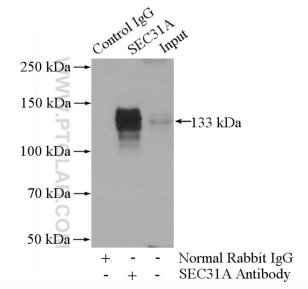
Données de validation sélectionnées



HeLa cells were subjected to SDS PAGE followed by western blot with 17913-1-AP (SEC31A antibody) at dilution of 1:500 incubated at room temperature for 1.5 hours.



Immunofluorescent analysis of (-20°C Methanol) fixed HeLa cells using SEC31A antibody (17913-1-AP) at dilution of 1:400 and CoraLite® 488-Conjugated AffiniPure Goat Anti-Rabbit IgG(H+L).



IP Result of anti-SEC31A (IP:17913-1-AP, 4ug; Detection:17913-1-AP 1:500) with HeLa cells lysate 1080ug.