

À des fins de recherche uniquement

# Anticorps Polyclonal de lapin anti-ING1



Numéro de catalogue: 17921-1-AP

## Informations de base

<b>Numéro de catalogue:</b> 17921-1-AP	<b>Numéro d'acquisition GenBank:</b> BC093942	<b>Méthode de purification:</b> Purification par affinité contre l'antigène
<b>Taille:</b> 150ul , Concentration: 350 µg/ml by Nanodrop and 173 µg/ml by Bradford method using BSA as the standard;	<b>Identification du gène (NCBI):</b> 3621	<b>Dilutions recommandées:</b> WB 1:500-1:1000
<b>Hôte:</b> Lapin	<b>Nom complet:</b> inhibitor of growth family, member 1	
<b>Isotype:</b> IgG	<b>MW calculé</b> 279aa,32 kDa; 422aa,47 kDa	
<b>Immunogen Catalog Number:</b> AG12338	<b>MW observés:</b> 47 kDa	

## Applications

<b>Applications testées:</b> WB,ELISA	<b>Contrôles positifs:</b> WB : tissu hépatique de souris, cellules A375
<b>Spécificité de l'espèce:</b> Humain, rat, souris	

## Informations générales

ING1, also inhibitor of growth protein 1, is a 422 amino acid protein, which contains 1 PHD-type zinc finger and belongs to the ING family. ING1 localizes in the nucleus and interacts with TP53. It exists as various isoforms and isoform 1 is a 47 kDa protein. Isoform 2 is a 33 kDa protein and expressed in all normal tissues, as well as in all breast cancer and melanoma cell lines examined. ING1 cooperates with p53/TP53 in the negative regulatory pathway of cell growth by modulating p53-dependent transcriptional activation. It is implicated as a tumor suppressor gene.

## Stockage

**Stockage:**  
Stocker à -20°C. Stable pendant un an après l'expédition.  
**Tampon de stockage:**  
PBS avec azoture de sodium à 0,02 % et glycérol à 50 % pH 7,3  
L'aliquotage n'est pas nécessaire pour le stockage à -20C

\*\*\* Les 20ul contiennent 0,1% de BSA.

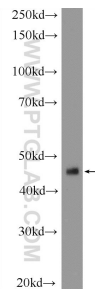
For technical support and original validation data for this product please contact:

T: 1 (888) 4PTGLAB (1-888-478-4522) (toll free in USA), or 1(312) 455-8498 (outside USA)

E: [proteintech@ptglab.com](mailto:proteintech@ptglab.com)  
W: [ptglab.com](http://ptglab.com)

This product is exclusively available under Proteintech Group brand and is not available to purchase from any other manufacturer.

## Données de validation sélectionnées



mouse liver tissue were subjected to SDS PAGE followed by western blot with 17921-1-AP (ING1 Antibody) at dilution of 1:600 incubated at room temperature for 1.5 hours.