

À des fins de recherche uniquement

# Anticorps Polyclonal de lapin anti-ETFB



Numéro de catalogue: 17925-1-AP

7 Publications

## Informations de base

Numéro de catalogue:  
17925-1-AP

Taille:  
150ul, Concentration: 600 µg/ml by Nanodrop and 320 µg/ml by Bradford method using BSA as the standard;

Hôte:  
Lapin

Isotype:  
IgG

Immunogen Catalog Number:  
AG12344

Numéro d'acquisition GenBank:  
BC093961

Identification du gène (NCBI):  
2109

Nom complet:  
electron-transfer-flavoprotein, beta polypeptide

MW calculé:  
255 aa, 28 kDa

MW observés:  
28 kDa

Méthode de purification:  
Purification par affinité contre l'antigène

Dilutions recommandées:  
WB 1:500-1:2000  
IP 0.5-4.0 ug for IP and 1:500-1:2000 for WB  
IF 1:10-1:100

## Applications

Applications testées:  
IF, IP, WB, ELISA

Demandes citées:  
IF, WB

Spécificité de l'espèce:  
Humain, rat, souris

Espèces citées:  
Humain, souris

Contrôles positifs:

WB : tissu de muscle squelettique de souris, tissu cardiaque humain, tissu cérébral de rat, tissu cérébral de souris

IP : tissu cérébral de souris,

IF : cellules HepG2,

## Informations générales

Electron transfer flavoprotein (ETF) exists in the mitochondrial matrix as a heterodimer of 30 kDa alpha subunits (ETFA) and 28 kDa beta subunits (ETFB) and contains 1 flavin adenine dinucleotide (FAD) and 1 adenosine 5-prime monophosphate (AMP) per heterodimer. It serves as a specific electron acceptor for several dehydrogenases, including five acyl-CoA dehydrogenases, glutaryl-CoA and sarcosine dehydrogenase. ETFB has 2 isoforms produced by alternative splicing. Defects in ETFB are the cause of glutaric aciduria type 2B (GA2B).

## Publications notables

Autrice	Pubmed ID	Journal	Application
Sara García-Gómez	24207056	Mol Cell	WB
Debora Lia	29848661	J Cell Sci	WB
Olga Zurita Rendón	27215383	Mol Cell Biol	WB

## Stockage

Stockage:

Stocker à -20°C. Stable pendant un an après l'expédition.

Tampon de stockage:

PBS avec azoture de sodium à 0,02 % et glycérol à 50 % pH 7,3

L'aliquotage n'est pas nécessaire pour le stockage à -20C

\*\*\* Les 20ul contiennent 0,1% de BSA.

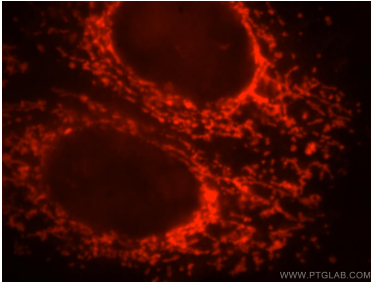
For technical support and original validation data for this product please contact:

T: 1 (888) 4PTGLAB (1-888-478-4522) (toll free in USA), or 1(312) 455-8498 (outside USA)

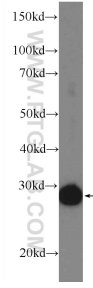
E: [proteintech@ptglab.com](mailto:proteintech@ptglab.com)  
W: [ptglab.com](http://ptglab.com)

This product is exclusively available under Proteintech Group brand and is not available to purchase from any other manufacturer.

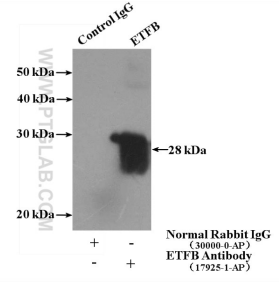
## Données de validation sélectionnées



Immunofluorescent analysis of HepG2 cells, using ETFB antibody 17925-1-AP at 1:25 dilution and Rhodamine-labeled goat anti-rabbit IgG (red).



mouse skeletal muscle tissue were subjected to SDS PAGE followed by western blot with 17925-1-AP (ETFB Antibody) at dilution of 1:1000 incubated at room temperature for 1.5 hours.



IP Result of anti-ETFB (IP:17925-1-AP, 3ug; Detection:17925-1-AP 1:1000) with mouse brain tissue lysate 4000ug.