

À des fins de recherche uniquement

Anticorps Polyclonal de lapin anti-PTPRR



Numéro de catalogue: 17937-1-AP

3 Publications

Informations de base

Numéro de catalogue:
17937-1-AP

Taille:
150ul, Concentration: 400 µg/ml by Nanodrop and 193 µg/ml by Bradford method using BSA as the standard;

Hôte:
Lapin

Isotype:
IgG

Immunogen Catalog Number:
AG12145

Numéro d'acquisition GenBank:
BC110900

Identification du gène (NCBI):
5801

Nom complet:
protein tyrosine phosphatase, receptor type, R

MW calculé
657 aa, 74 kDa

MW observés:
32 kDa, 47 kDa, 65 kDa

Méthode de purification:
Purification par affinité contre l'antigène

Dilutions recommandées:
WB 1:500-1:2000

Applications

Applications testées:
WB, ELISA

Demandes citées:
IF, WB

Spécificité de l'espèce:
Humain, rat, souris

Espèces citées:
Humain, souris

Contrôles positifs:

WB : cellules HeLa, cellules COLO 320, cellules SH-SY5Y, tissu cérébral de souris

Informations générales

PTPRR (protein tyrosine phosphatase, receptor type, R) is also named as PCPTP1, PTP-SL, PTPBR7 and belongs to the protein-tyrosine phosphatase family. It sequesters mitogen-activated protein kinases (MAPKs) such as MAPK1, MAPK3 and MAPK14 in the cytoplasm in an inactive form. It has four isoforms that they have molecular weights of 72, 60, 42 and 37 kDa, respectively, and differ in the length of their N-terminal part which result in distinct subcellular localizations. All PTPRR isoforms are found to be short-lived proteins, with half-lives of around 3-5 hours, and are constitutively phosphorylated on one or two of the previously identified protein kinase A and MAP kinase target sites.

Publications notables

Autrice	Pubmed ID	Journal	Application
Xinrong Li	26773914	J Affect Disord	WB
Jennifer Munkley	25592066	BMC Cancer	WB
Jiao Tian	31024255	Front Mol Neurosci	WB, IF

Stockage

Stockage:

Stocker à -20°C. Stable pendant un an après l'expédition.

Tampon de stockage:

PBS avec azoture de sodium à 0,02 % et glycérol à 50 % pH 7,3

L'aliquotage n'est pas nécessaire pour le stockage à -20C

*** Les 20ul contiennent 0,1% de BSA.

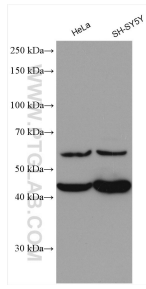
For technical support and original validation data for this product please contact:

T: 1 (888) 4PTGLAB (1-888-478-4522) (toll free in USA), or 1(312) 455-8498 (outside USA)

E: proteintech@ptglab.com
W: ptglab.com

This product is exclusively available under Proteintech Group brand and is not available to purchase from any other manufacturer.

Données de validation sélectionnées



Various lysates were subjected to SDS PAGE followed by western blot with 17937-1-AP (PTPRR antibody) at dilution of 1:1000 incubated at room temperature for 1.5 hours.