

À des fins de recherche uniquement

Anticorps Polyclonal de lapin anti-RPE65



Numéro de catalogue: 17939-1-AP

10 Publications

Informations de base

Numéro de catalogue: 17939-1-AP	Numéro d'acquisition GenBank: BC075036	Méthode de purification: Purification par affinité contre l'antigène
Taille: 150ul, Concentration: 450 µg/ml by Nanodrop and 187 µg/ml by Bradford method using BSA as the standard;	Identification du gène (NCBI): 6121	Dilutions recommandées: WB 1:500-1:3000 IHC 1:50-1:500 IF 1:50-1:500
Hôte: Lapin	Nom complet: retinal pigment epithelium-specific protein 65kDa	
Isotype: IgG	MW calculé: 533 aa, 61 kDa	
Immunogen Catalog Number: AG12356	MW observés: 65 kDa, 61 kDa	

Applications

Applications testées:

IF, IHC, WB, ELISA

Demandes citées:

IF, IHC, WB

Spécificité de l'espèce:

Humain, rat, souris

Espèces citées:

Humain, rat, souris

Remarque-IHC: il est suggéré de démasquer l'antigène avec un tampon de TE buffer pH 9.0; (*) A défaut, 'le démasquage de l'antigène peut être effectué avec un tampon citrate pH 6,0.

Contrôles positifs:

WB : cellules Y79, cellules HeLa, cellules PC-3, tissu oculaire de souris

IHC : tissu oculaire de souris,

IF : tissu oculaire de souris,

Informations générales

RPE65(Retinal pigment epithelium-specific 65 kDa protein) is also named as retinoid isomerohydrolase with the calculated molecular weight of 61 kDa and belongs to the carotenoid oxygenase family. It is a microsomal protein with isomerase activity in the retinoid visual cycle that playing a role in the isomerisation of all-trans (vitamin A) to 11-cis retinal, the chromophore of the visual pigments. It also might be involved in retinoid uptake of keratinocytes.

Publications notables

Autrice	Pubmed ID	Journal	Application
Jianing Gu	31075513	Acta Biomater	WB
Caiying Liu	35325805	Redox Biol	WB
Lars Tebbe	35344225	FASEB J	IF

Stockage

Stockage:

Stocker à -20°C. Stable pendant un an après l'expédition.

Tampon de stockage:

PBS avec azoture de sodium à 0,02 % et glycérol à 50 % pH 7,3

L'aliquotage n'est pas nécessaire pour le stockage à -20C

*** Les 20ul contiennent 0,1% de BSA.

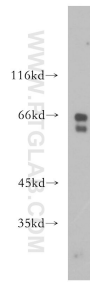
For technical support and original validation data for this product please contact:

T: 1 (888) 4PTGLAB (1-888-478-4522) (toll free in USA), or 1(312) 455-8498 (outside USA)

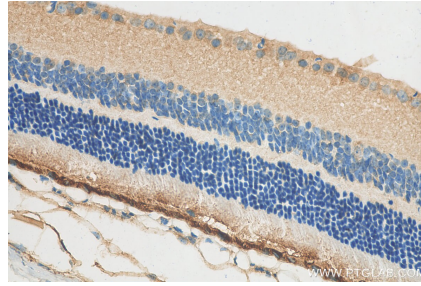
E: proteintech@ptglab.com
W: ptglab.com

This product is exclusively available under Proteintech Group brand and is not available to purchase from any other manufacturer.

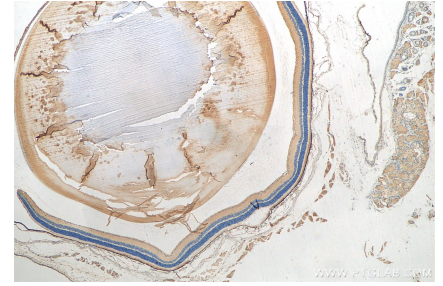
Données de validation sélectionnées



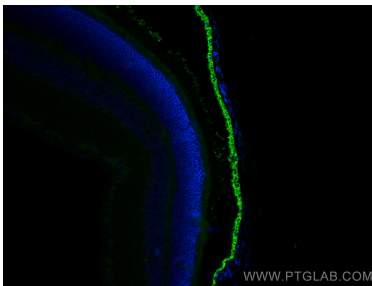
Y79 cells were subjected to SDS PAGE followed by western blot with 17939-1-AP (RPE65 antibody) at dilution of 1:600 incubated at room temperature for 1.5 hours.



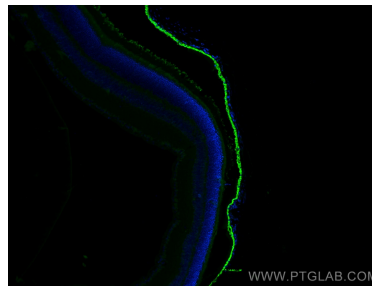
Immunohistochemical analysis of paraffin-embedded mouse eye tissue slide using 17939-1-AP (RPE65 antibody) at dilution of 1:200 (under 40x lens). Heat mediated antigen retrieval with Tris-EDTA buffer (pH 9.0).



Immunohistochemical analysis of paraffin-embedded mouse eye tissue slide using 17939-1-AP (RPE65 antibody) at dilution of 1:200 (under 4x lens). Heat mediated antigen retrieval with Tris-EDTA buffer (pH 9.0).



Immunofluorescent analysis of (4% PFA) fixed mouse eye tissue using RPE65 antibody (17939-1-AP) at dilution of 1:200 and CoraLite®488-Conjugated AffiniPure Goat Anti-Rabbit IgG(H+L).



Immunofluorescent analysis of (4% PFA) fixed mouse eye tissue using RPE65 antibody (17939-1-AP) at dilution of 1:200 and CoraLite®488-Conjugated AffiniPure Goat Anti-Rabbit IgG(H+L).