

À des fins de recherche uniquement

Anticorps Polyclonal de lapin anti-GLRA1



Numéro de catalogue: 17951-1-AP

5 Publications

Informations de base

Numéro de catalogue:
17951-1-AP

Taille:
150ul, Concentration: 750 µg/ml by Nanodrop and 333 µg/ml by Bradford method using BSA as the standard;

Hôte:
Lapin

Isotype:
IgG

Immunogen Catalog Number:
AG12431

Numéro d'acquisition GenBank:
BC074980

Identification du gène (NCBI):
2741

Nom complet:
glycine receptor, alpha 1

MW calculé
449 aa, 52 kDa

MW observés:
48 kDa

Méthode de purification:
Purification par affinité contre l'antigène

Dilutions recommandées:
WB 1:500-1:3000

Applications

Applications testées:
FC, WB, ELISA

Demandes citées:
CoIP, IF, WB

Spécificité de l'espèce:
Humain, rat, souris

Espèces citées:
Humain, souris

Contrôles positifs:

WB : tissu cérébral de souris, cellules SH-SY5Y, tissu de cervelet de souris

Informations générales

Glycine is an inhibitory neurotransmitter in the central nervous system. The glycine receptor (GlyR) is a member of the nicotinic acetylcholine receptor of ligand-gated ion channels. This receptor has important roles in a variety of physiological processes, especially in mediating inhibitory neurotransmission in the spinal cord and brain stem. GlyR is a pentameric receptor comprised of alpha and beta subunits. Four alpha-subunits (GLRA1, GLRA2, GLRA3, GLRA4) and one beta-subunit (GLRB) of GlyR have been identified. (PMID: 11409700; 15383648)

Publications notables

Autrice	Pubmed ID	Journal	Application
Ghada I Aboheimed	35526563	J Biol Chem	WB, IF
Lin Yao	33727056	Eur J Pharmacol	WB
Niannian Huang	31321459	Psychopharmacology (Berl)	WB

Stockage

Stockage:

Stocker à -20°C. Stable pendant un an après l'expédition.

Tampon de stockage:

PBS avec azoture de sodium à 0,02 % et glycérol à 50 % pH 7,3

L'aliquotage n'est pas nécessaire pour le stockage à -20C

*** Les 20ul contiennent 0,1% de BSA.

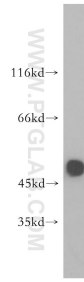
For technical support and original validation data for this product please contact:

T: 1 (888) 4PTGLAB (1-888-478-4522) (toll free in USA), or 1(312) 455-8498 (outside USA)

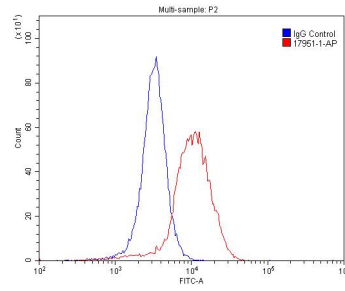
E: proteintech@ptglab.com
W: ptglab.com

This product is exclusively available under Proteintech Group brand and is not available to purchase from any other manufacturer.

Données de validation sélectionnées



mouse brain tissue were subjected to SDS PAGE followed by western blot with 17951-1-AP (GLRA1 antibody) at dilution of 1:500 incubated at room temperature for 1.5 hours.



1X10⁶ SH-SY5Y cells were stained with 0.2ug GLRA1 antibody (17951-1-AP, red) and control antibody (blue). Fixed with 4% PFA blocked with 3% BSA (30 min). Alexa Fluor 488-conjugated AffiniPure Goat Anti-Rabbit IgG(H+L) with dilution 1:1500.