

À des fins de recherche uniquement

Anticorps Polyclonal de lapin anti-Securin



Numéro de catalogue: 18040-1-AP

Phare

6 Publications

Informations de base

Numéro de catalogue:

18040-1-AP

Taille:

150ul, Concentration: 900 µg/ml by Nanodrop and 380 µg/ml by Bradford method using BSA as the standard;

Hôte:

Lapin

Isotype:

IgG

Immunogen Catalog Number:

AG12670

Numéro d'acquisition GenBank:

BC101834

Identification du gène (NCBI):

9232

Nom complet:

pituitary tumor-transforming 1

MW calculé

202 aa, 22 kDa

MW observés:

28 kDa

Méthode de purification:

Purification par affinité contre l'antigène

Dilutions recommandées:

WB 1:1000-1:6000

IHC 1:50-1:500

IF 1:200-1:800

Applications

Applications testées:

IF, IHC, WB, ELISA

Demandes citées:

IF, IHC, IP, WB

Spécificité de l'espèce:

Humain

Espèces citées:

Humain, souris

Remarque-IHC: il est suggéré de démasquer l'antigène avec un tampon de TE buffer pH 9,0; (*) A défaut, 'le démasquage de l'antigène peut être effectué avec un tampon citrate pH 6,0.

Contrôles positifs:

WB : cellules Daudi, cellules HepG2, cellules MDA-MB-231

IHC : tissu de carcinome urothélial humain,

IF : cellules U2OS, cellules HepG2

Informations générales

Securin, also known as the pituitary tumor transforming gene (PTTG1), was first isolated from rat pituitary tumor cells. Securin is a multi-functional protein that regulates sister chromatin segregation in mitosis, DNA repair, gene transcription, metabolism, and organ development. Securin is normally expressed in tissues with high proliferative activity, including the spleen, thymus gland, and testis, whereas it is rarely expressed in differentiated mature tissues (PMID: 22563433, PMID: 36123907). The calculated molecular weight of Securin is 22 kDa. With post-translational modification, the molecular weight of Securin will be migrated to 28 kDa.

Publications notables

Autrice	Pubmed ID	Journal	Application
Zhenhua Zhang	31346548	Open Med (Wars)	WB
Jinyu Yang	34297995	Cryobiology	IF
Mengchen Zhang	27991546	Sci Rep	WB

Stockage

Stockage:

Stocker à -20°C. Stable pendant un an après l'expédition.

Tampon de stockage:

PBS avec azoture de sodium à 0,02 % et glycérol à 50 % pH 7,3

L'aliquotage n'est pas nécessaire pour le stockage à -20C

*** Les 20ul contiennent 0,1% de BSA.

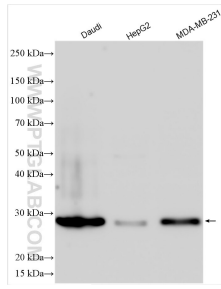
For technical support and original validation data for this product please contact:

T: 1 (888) 4PTGLAB (1-888-478-4522) (toll free in USA), or 1(312) 455-8498 (outside USA)

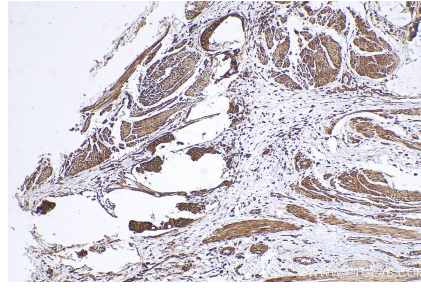
E: proteintech@ptglab.com
W: ptglab.com

This product is exclusively available under Proteintech Group brand and is not available to purchase from any other manufacturer.

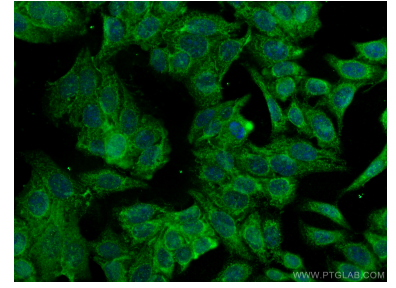
Données de validation sélectionnées



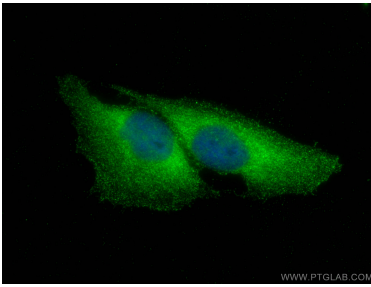
Various lysates were subjected to SDS PAGE followed by western blot with 18040-1-AP (Securin antibody) at dilution of 1:3000 incubated at room temperature for 1.5 hours.



Immunohistochemical analysis of paraffin-embedded human urothelial carcinoma tissue slide using 18040-1-AP (Securin antibody) at dilution of 1:200 (under 10x lens). Heat mediated antigen retrieval with Tris-EDTA buffer (pH 9.0).



Immunofluorescent analysis of (-20°C Methanol) fixed HepG2 cells using Securin / PTTG1 antibody (18040-1-AP) at dilution of 1:400 and CoraLite®488-Conjugated AffiniPure Goat Anti-Rabbit IgG(H+L).



Immunofluorescent analysis of (-20°C Methanol) fixed U2OS cells using Securin antibody (18040-1-AP) at dilution of 1:400 and CoraLite®488-Conjugated AffiniPure Goat Anti-Rabbit IgG(H+L).