

À des fins de recherche uniquement

# Anticorps Polyclonal de lapin anti-SERPINB13



Numéro de catalogue: 18045-1-AP

## Informations de base

<b>Numéro de catalogue:</b> 18045-1-AP	<b>Numéro d'acquisition GenBank:</b> BC101821	<b>Méthode de purification:</b> Purification par affinité contre l'antigène
<b>Taille:</b> 150ul, Concentration: 500 µg/ml by Nanodrop and 380 µg/ml by Bradford method using BSA as the standard;	<b>Identification du gène (NCBI):</b> 5275	<b>Dilutions recommandées:</b> IHC 1:50-1:500 IF 1:10-1:100
<b>Hôte:</b> Lapin	<b>Nom complet:</b> serpin peptidase inhibitor, clade B (ovalbumin), member 13	
<b>Isotype:</b> IgG	<b>MW calculé</b> 391 aa, 44 kDa	
<b>Immunogen Catalog Number:</b> AG12686		

## Applications

### Applications testées:

IF, IHC, ELISA

### Spécificité de l'espèce:

Humain, rat, souris

**Remarque-IHC: il est suggéré de démasquer l'antigène avec un tampon de TE buffer pH 9.0; (\*) À défaut, le démasquage de l'antigène peut être effectué avec un tampon citrate pH 6,0.**

### Contrôles positifs:

IHC : tissu de cancer de l'oesophage humain, tissu cutané de souris, tissu cutané humain

IF : cellules HepG2, cellules Hela

## Informations générales

### Stockage

#### Stockage:

Stocker à -20°C. Stable pendant un an après l'expédition.

#### Tampon de stockage:

PBS avec azoture de sodium à 0,02 % et glycérol à 50 % pH 7,3

L'aliquotage n'est pas nécessaire pour le stockage à -20C

\*\*\* Les 20ul contiennent 0,1% de BSA.

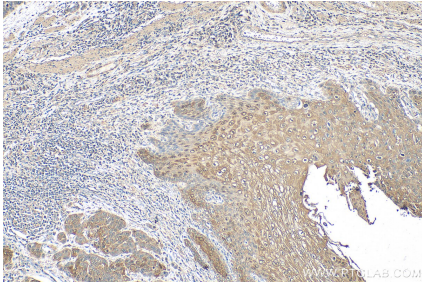
For technical support and original validation data for this product please contact:

T: 1 (888) 4PTGLAB (1-888-478-4522) (toll free in USA), or 1(312) 455-8498 (outside USA)

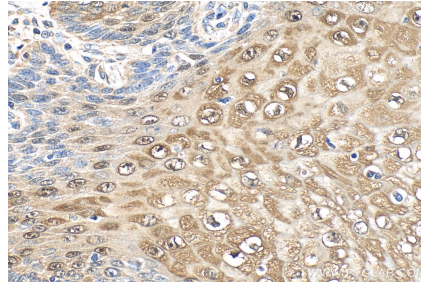
E: proteintech@ptglab.com  
W: ptglab.com

This product is exclusively available under Proteintech Group brand and is not available to purchase from any other manufacturer.

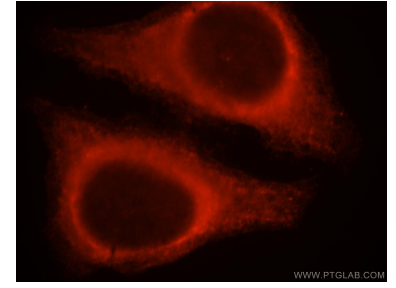
## Données de validation sélectionnées



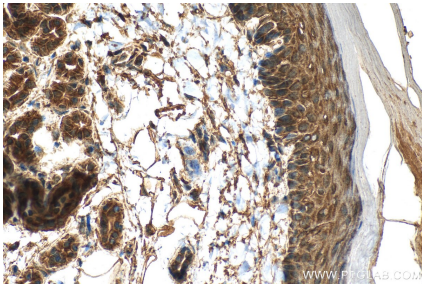
Immunohistochemical analysis of paraffin-embedded human oesophagus cancer tissue slide using 18045-1-AP (SERPINB13 antibody) at dilution of 1:200 (under 10x lens). Heat mediated antigen retrieval with Tris-EDTA buffer (pH 9.0).



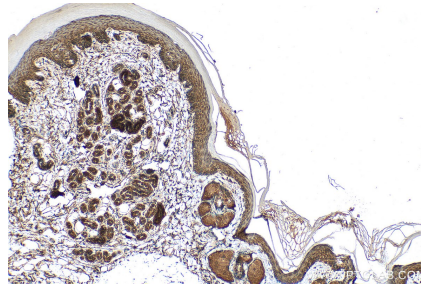
Immunohistochemical analysis of paraffin-embedded human oesophagus cancer tissue slide using 18045-1-AP (SERPINB13 antibody) at dilution of 1:200 (under 40x lens). Heat mediated antigen retrieval with Tris-EDTA buffer (pH 9.0).



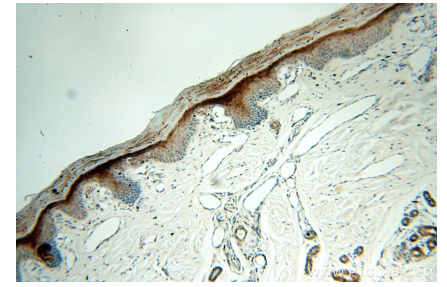
Immunofluorescent analysis of HepG2 cells, using SERPINB13 antibody 18045-1-AP at 1:25 dilution and Rhodamine-labeled goat anti-rabbit IgG (red).



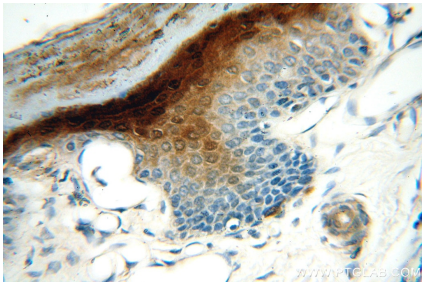
Immunohistochemical analysis of paraffin-embedded mouse skin tissue slide using 18045-1-AP (SERPINB13 antibody) at dilution of 1:200 (under 40x lens). Heat mediated antigen retrieval with Tris-EDTA buffer (pH 9.0).



Immunohistochemical analysis of paraffin-embedded mouse skin tissue slide using 18045-1-AP (SERPINB13 antibody) at dilution of 1:200 (under 10x lens). Heat mediated antigen retrieval with Tris-EDTA buffer (pH 9.0).



Immunohistochemical analysis of paraffin-embedded human skin using 18045-1-AP (SERPINB13 antibody) at dilution of 1:100 (under 10x lens).



Immunohistochemical analysis of paraffin-embedded human skin using 18045-1-AP (SERPINB13 antibody) at dilution of 1:100 (under 40x lens).