

À des fins de recherche uniquement

Anticorps Polyclonal de lapin anti-MLN51/CASC3



Numéro de catalogue: 18047-1-AP

2 Publications

Informations de base

Numéro de catalogue:

18047-1-AP

Taille:

150ul, Concentration: 650 µg/ml by Nanodrop and 333 µg/ml by Bradford method using BSA as the standard;

Hôte:

Lapin

Isotype:

IgG

Immunogen Catalog Number:

AG12694

Numéro d'acquisition GenBank:

BC050526

Identification du gène (NCBI):

22794

Nom complet:

cancer susceptibility candidate 3

MW calculé

703 aa, 76 kDa

MW observés:

115-120 kDa

Méthode de purification:

Purification par affinité contre l'antigène

Dilutions recommandées:

WB 1:500-1:1000

IHC 1:50-1:500

IF 1:10-1:100

Applications

Applications testées:

IF, IHC, WB, ELISA

Demandes citées:

IF, WB

Spécificité de l'espèce:

Humain

Espèces citées:

Humain

Remarque-IHC: il est suggéré de démasquer l'antigène avec un tampon de TE buffer pH 9,0; (*) A défaut, 'le démasquage de l'antigène peut être effectué avec un tampon citrate pH 6,0.

Contrôles positifs:

WB : cellules A2780, cellules MCF-7, cellules SKOV-3

IHC : tissu de cancer du foie humain,

IF : cellules HepG2,

Informations générales

CASC3(cancer susceptibility candidate 3) is also named as MLN51 and belongs to the CASC3 family. It is induced by CSF2, and is important in the proliferation of RA fibroblast-like synoviocytes in the pathogenesis of rheumatoid arthritis (RA)(PMID:17101062). It is a nucleocytoplasmic protein containing, within its aminoterminal half, a coiled-coil domain followed by two nuclear localization signals (NLSs) responsible for nuclear localization and, in its carboxyl-terminal half, a nuclear export signal(NES) that mediates cytoplasmic retention. It possesses many potential phosphorylation sites and is found to be phosphorylated in both normal and cancer-derived cells. (PMID:17652158).

Publications notables

Autrice	Pubmed ID	Journal	Application
Ivone G Bruno	21596314	Mol Cell	WB
Daguenet Elisabeth E	22419818	Mol Biol Cell	WB,IF

Stockage

Stockage:

Stocker à -20°C. Stable pendant un an après l'expédition.

Tampon de stockage:

PBS avec azoture de sodium à 0,02 % et glycérol à 50 % pH 7,3

L'aliquotage n'est pas nécessaire pour le stockage à -20C

*** Les 20ul contiennent 0,1% de BSA.

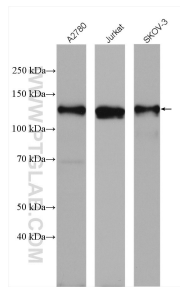
For technical support and original validation data for this product please contact:

T: 1 (888) 4PTGLAB (1-888-478-4522) (toll free in USA), or 1(312) 455-8498 (outside USA)

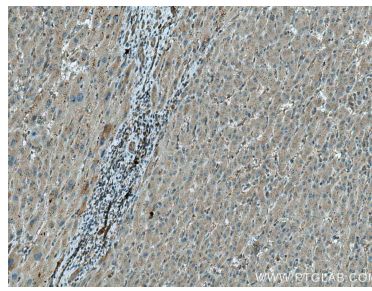
E: proteintech@ptglab.com
W: ptglab.com

This product is exclusively available under Proteintech Group brand and is not available to purchase from any other manufacturer.

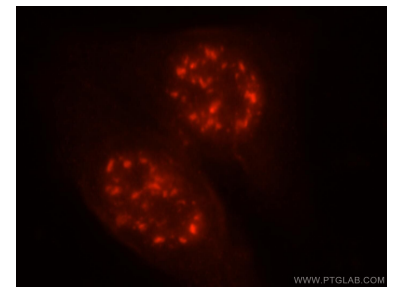
Données de validation sélectionnées



Various lysates were subjected to SDS PAGE followed by western blot with 18047-1-AP (MLN51/CASC3 antibody) at dilution of 1:500 incubated at room temperature for 1.5 hours.



Immunohistochemical analysis of paraffin-embedded human liver cancer tissue slide using 18047-1-AP (MLN51/CASC3 antibody) at dilution of 1:200 (under 10x lens). Heat mediated antigen retrieval with Tris-EDTA buffer (pH 9.0).



Immunofluorescent analysis of HepG2 cells, using CASC3 antibody 18047-1-AP at 1:25 dilution and Rhodamine-labeled goat anti-rabbit IgG (red).