

À des fins de recherche uniquement

Anticorps Polyclonal de lapin anti-PDH E1 Alpha



Numéro de catalogue: 18068-1-AP

Phare

48 Publications

Informations de base

Numéro de catalogue:

18068-1-AP

Taille:

150ul, Concentration: 500 µg/ml by Nanodrop;

Hôte:

Lapin

Isotype:

IgG

Immunogen Catalog Number:

AG12701

Numéro d'acquisition GenBank:

BC002406

Identification du gène (NCBI):

5160

Nom complet:

pyruvate dehydrogenase (lipoamide) alpha 1

MW calculé

43 kDa

MW observés:

39-48 kDa

Méthode de purification:

Purification par affinité contre l'antigène

Dilutions recommandées:

WB 1:5000-1:50000

IP 0.5-4.0 ug for IP and 1:500-1:2000 for WB

IHC 1:50-1:500

IF 1:50-1:500

Applications

Applications testées:

IF, IHC, IP, WB, ELISA

Demandes citées:

IF, IHC, IP, WB

Spécificité de l'espèce:

Humain, rat, souris

Espèces citées:

Humain, poulet, rat, souris

Contrôles positifs:

WB : cellules HeLa, cellules HEK293, tissu cérébral de rat, tissu cérébral de souris, tissu rénal de rat

IP : tissu rénal de souris,

IHC : tissu de cancer du foie humain,

IF : cellules HepG2,

Remarque-IHC: il est suggéré de démasquer l'antigène avec un tampon de TE buffer pH 9,0; (*) À défaut, le démasquage de l'antigène peut être effectué avec un tampon citrate pH 6,0.

Informations générales

PDHA1(Pyruvate dehydrogenase E1 component subunit alpha, somatic form, mitochondrial) is also named as PHE1A.It is one of the 3 enzymes of the pyruvate dehydrogenase complex which is a nuclear-encoded mitochondrial matrix multienzyme complex that provides the primary link between glycolysis and the tricarboxylic acid (TCA) cycle by catalyzing the irreversible conversion of pyruvate into acetyl-CoA(PMID:7853374).It has 4 isoforms produced by alternative splicing with the molecular mass of 39-48 kDa. Defects in PDHA1 are a cause of pyruvate dehydrogenase E1-alpha deficiency (PDHAD) and X-linked Leigh syndrome (X-LS).

Publications notables

Autrice	Pubmed ID	Journal	Application
Fabao Liu	26309161	Oncotarget	WB,IHC
Xiao Meng Zhang	33062708	J Diabetes Res	WB
Teresa W-M Fan	36150727	J Immunol	

Stockage

Stockage:

Stocker à -20°C. Stable pendant un an après l'expédition.

Tampon de stockage:

PBS avec azoture de sodium à 0,02 % et glycérol à 50 % pH 7,3

L'aliquotage n'est pas nécessaire pour le stockage à -20C

*** Les 20ul contiennent 0,1% de BSA.

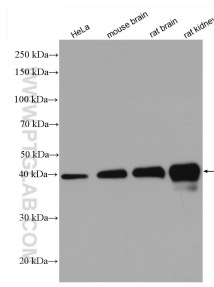
For technical support and original validation data for this product please contact:

T: 1 (888) 4PTGLAB (1-888-478-4522) (toll free in USA), or 1(312) 455-8498 (outside USA)

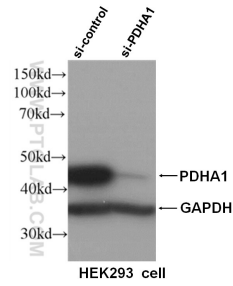
E: proteintech@ptglab.com
W: ptglab.com

This product is exclusively available under Proteintech Group brand and is not available to purchase from any other manufacturer.

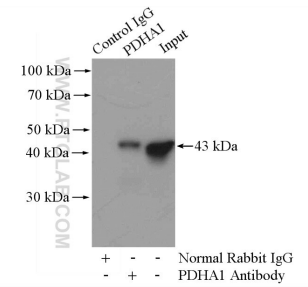
Données de validation sélectionnées



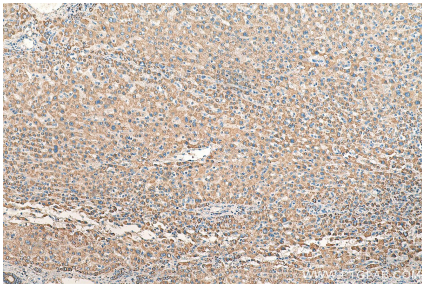
Various lysates were subjected to SDS PAGE followed by western blot with 18068-1-AP (PDH E1 Alpha antibody) at dilution of 1:10000 incubated at room temperature for 1.5 hours.



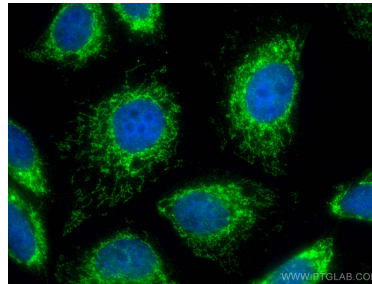
WB result of PDHA1 antibody (18068-1-AP, 1:1000) with si-control and si-PDHA1 transfected HEK293 cells.



IP Result of anti-PDH E1α (IP:18068-1-AP, 4ug; Detection:18068-1-AP 1:1.000) with mouse kidney tissue lysate 4400ug.



Immunohistochemical analysis of paraffin-embedded human liver cancer tissue slide using 18068-1-AP (PDH E1 Alpha antibody) at dilution of 1:200 (under 10x lens). Heat mediated antigen retrieval with Tris-EDTA buffer (pH 9.0).



Immunofluorescent analysis of (4% PFA) fixed HepG2 cells using PDH E1 Alpha antibody (18068-1-AP) at dilution of 1:200 and CoraLite@488-Conjugated AffiniPure Goat Anti-Rabbit IgG(H+L).