

À des fins de recherche uniquement

Anticorps Polyclonal de lapin anti-SEMA7A



Numéro de catalogue: 18070-1-AP

2 Publications

Informations de base

Numéro de catalogue:
18070-1-AP

Taille:
150ul, Concentration: 450 µg/ml by Nanodrop and 300 µg/ml by Bradford method using BSA as the standard;

Hôte:
Lapin

Isotype:
IgG

Immunogen Catalog Number:
AG12707

Numéro d'acquisition GenBank:
BC101643

Identification du gène (NCBI):
8482

Nom complet:
semaphorin 7A, GPI membrane anchor (John Milton Hagen blood group)

MW calculé
666 aa, 75 kDa

MW observés:
75-80 kDa

Méthode de purification:
Purification par affinité contre l'antigène

Dilutions recommandées:
WB 1:1000-1:4000
IP 0.5-4.0 ug for IP and 1:500-1:1000 for WB

Applications

Applications testées:
IP, WB, ELISA

Demandes citées:
WB

Spécificité de l'espèce:
Humain, souris

Espèces citées:
Humain, souris

Contrôles positifs:

WB : tissu placentaire humain, tissu cérébral de souris

IP : tissu placentaire humain,

Informations générales

SEMA7A, also named CD108 and SEMAL, belongs to the semaphorin family. SEMA7A is the only membrane-associated glycosylphosphatidylinositol (GPI)-linked semaphorin and plays a role in the regulation of neuronal axon outgrowth. In addition to its role in guiding axon pathfinding during neuronal development, Sema7A has diverse functions in morphogenesis and immune cell control and regulates T cell responses via the $\alpha 1\beta 1$ integrin receptor (PMID: 31179640). SEMA7A has 2 isoforms with molecular weights of 73 and 75 kDa, respectively.

Publications notables

Autrice	Pubmed ID	Journal	Application
Qiongyu Lu	36842496	Mol Metab	WB
Xiaochao Tan	36757799	J Clin Invest	WB

Stockage

Stockage:

Stocker à -20°C. Stable pendant un an après l'expédition.

Tampon de stockage:

PBS avec azoture de sodium à 0,02 % et glycérol à 50 % pH 7,3

L'aliquotage n'est pas nécessaire pour le stockage à -20C

*** Les 20ul contiennent 0,1% de BSA.

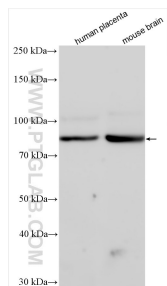
For technical support and original validation data for this product please contact:

T: 1 (888) 4PTGLAB (1-888-478-4522) (toll free in USA), or 1(312) 455-8498 (outside USA)

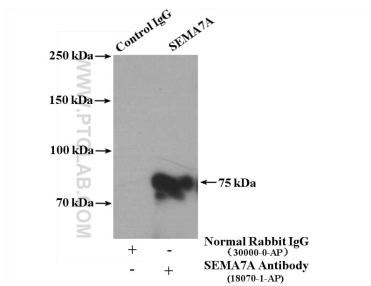
E: proteintech@ptglab.com
W: ptglab.com

This product is exclusively available under Proteintech Group brand and is not available to purchase from any other manufacturer.

Données de validation sélectionnées



Various lysates were subjected to SDS PAGE followed by western blot with 18070-1-AP (SEMA7A antibody) at dilution of 1:2000 incubated at room temperature for 1.5 hours.



IP result of anti-SEMA7A (IP:18070-1-AP, 4ug; Detection:18070-1-AP 1:500) with human placenta tissue lysate 2600 ug.