

À des fins de recherche uniquement

# Anticorps Polyclonal de lapin anti-CLOCK



Numéro de catalogue: 18094-1-AP

Phare

13 Publications

## Informations de base

Numéro de catalogue:

18094-1-AP

Taille:

150ul, Concentration: 500 µg/ml by Nanodrop;

Hôte:

Lapin

Isotype:

IgG

Immunogen Catalog Number:

AG12826

Numéro d'acquisition GenBank:

BC041878

Identification du gène (NCBI):

9575

Nom complet:

clock homolog (mouse)

MW calculé

846 aa, 95 kDa

MW observés:

95-110 kDa

Méthode de purification:

Purification par affinité contre l'antigène

Dilutions recommandées:

WB 1:500-1:2000

IF 1:20-1:200

## Applications

Applications testées:

IF, WB, ELISA

Demandes citées:

IHC, WB

Spécificité de l'espèce:

Humain

Espèces citées:

Humain, souris

Contrôles positifs:

WB : cellules HEK-293, cellules HeLa, cellules PC-3

IF : cellules HeLa,

## Informations générales

Circadian locomotor output cycles protein kaput (CLOCK), also named as BHLHE8 or KIAA0334, is a 846 amino acid protein, which contains one bHLH domain, one PAC domain, and two PAS domains. CLOCK localizes in the nucleus and cytoplasm. CLOCK is expressed in all tissues examined including spleen, thymus, prostate, testis, ovary, small intestine, colon, leukocytes, heart, brain, placenta, lung, liver, skeletal muscle, kidney and pancreas. ARNTL/2-CLOCK heterodimers activate E-box element (5'-CACGTG-3') transcription of a number of proteins of the circadian clock, such as PER1 and PER2. The calculated molecular weight of CLOCK is 95kDa, we detected a 95-110 kDa protein by western blot. Our result is similar to the result of reseach paper (PMID: 30683868).

## Publications notables

Autrice	Pubmed ID	Journal	Application
Xin Zhu	36373572	Br J Nutr	WB
Apirada Padlom	36376366	Sci Rep	WB
Xiyan Tan	34124276	J Immunol Res	IHC, WB

## Stockage

Stockage:

Stocker à -20°C. Stable pendant un an après l'expédition.

Tampon de stockage:

PBS avec azoture de sodium à 0,02 % et glycérol à 50 % pH 7,3

L'aliquotage n'est pas nécessaire pour le stockage à -20C

\*\*\* Les 20ul contiennent 0,1% de BSA.

For technical support and original validation data for this product please contact:

T: 1 (888) 4PTGLAB (1-888-478-4522) (toll free in USA), or 1(312) 455-8498 (outside USA)

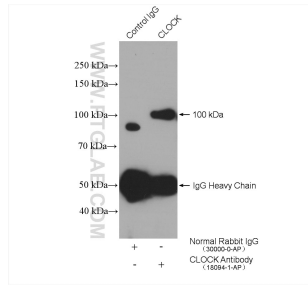
E: [proteintech@ptglab.com](mailto:proteintech@ptglab.com)  
W: [ptglab.com](http://ptglab.com)

This product is exclusively available under Proteintech Group brand and is not available to purchase from any other manufacturer.

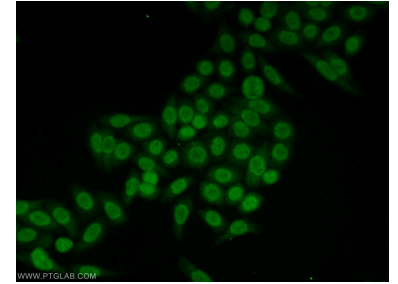
## Données de validation sélectionnées



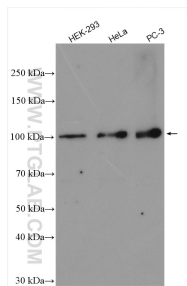
HEK-293 cells were subjected to SDS PAGE followed by western blot with 18094-1-AP (CLOCK antibody) at dilution of 1:1000 incubated at room temperature for 1.5 hours.



IP result of anti-CLOCK (IP:18094-1-AP, 4ug; Detection:18094-1-AP 1:300) with HeLa cells lysate 1600 ug.



Immunofluorescent analysis of HeLa cells using 18094-1-AP (CLOCK antibody) at dilution of 1:50 and Alexa Fluor 488-conjugated AffiniPure Goat Anti-Rabbit IgG(H+L).



Various lysates were subjected to SDS PAGE followed by western blot with 18094-1-AP (CLOCK antibody) at dilution of 1:3000 incubated at room temperature for 1.5 hours.