

À des fins de recherche uniquement

Anticorps Polyclonal de lapin anti-MSH6



Numéro de catalogue: 18120-1-AP

Phare

6 Publications

Informations de base

Numéro de catalogue:

18120-1-AP

Taille:

150ul, Concentration: 260 µg/ml by Nanodrop and 180 µg/ml by Bradford method using BSA as the standard;

Hôte:

Lapin

Isotype:

IgG

Immunogen Catalog Number:

AG12645

Numéro d'acquisition GenBank:

BC004246

Identification du gène (NCBI):

2956

Nom complet:

mutS homolog 6 (E. coli)

MW calculé

153 kDa

MW observés:

150-160 kDa

Méthode de purification:

Purification par affinité contre l'antigène

Dilutions recommandées:

WB 1:500-1:3000

IP 0.5-4.0 ug for IP and 1:500-1:1000 for WB

IHC 1:50-1:500

IF 1:10-1:100

Applications

Applications testées:

FC, IF, IHC, IP, WB, ELISA

Demandes citées:

IHC, WB

Spécificité de l'espèce:

Humain, rat, souris

Espèces citées:

Humain, souris

Remarque-IHC: il est suggéré de démasquer l'antigène avec un tampon de TE buffer pH 9,0; (*) A défaut, 'le démasquage de l'antigène peut être effectué avec un tampon citrate pH 6,0.

Contrôles positifs:

WB : cellules HEK-293, HEK-293

IP : cellules HEK-293,

IHC : tissu de côlon humain,

IF : cellules HeLa,

Informations générales

MSH6, also named as DNA mismatch repair protein Msh6 or GTMBP, is a 1360 amino acid protein, which contains one PWWP domain and belongs to the DNA mismatch repair MutS family. MSH6 localizes in the nucleus and is a component of the post-replicative DNA mismatch repair system. Msh2 and Msh6 form a protein complex required to repair mismatches generated during DNA replication.

Publications notables

Autrice	Pubmed ID	Journal	Application
Etsuko Yokota	29262545	Oncotarget	WB
Ying Shi	33181035	DNA Cell Biol	WB
Xuting Ran	35664732	Front Oncol	IHC

Stockage

Stockage:

Stocker à -20°C. Stable pendant un an après l'expédition.

Tampon de stockage:

PBS avec azoture de sodium à 0,02 % et glycérol à 50 % pH 7,3

L'aliquotage n'est pas nécessaire pour le stockage à -20C

*** Les 20ul contiennent 0,1% de BSA.

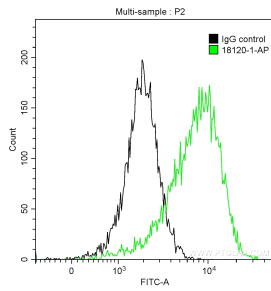
For technical support and original validation data for this product please contact:

T: 1 (888) 4PTGLAB (1-888-478-4522) (toll free in USA), or 1(312) 455-8498 (outside USA)

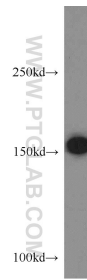
E: proteintech@ptglab.com
W: ptglab.com

This product is exclusively available under Proteintech Group brand and is not available to purchase from any other manufacturer.

Données de validation sélectionnées



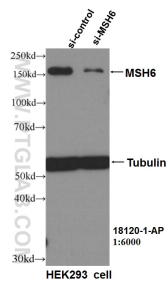
1X10⁶ HEK-293 cells were intracellularly stained with 0.2 ug Anti-Human MSH6 (18120-1-AP) and CoraLite®488-Conjugated AffiniPure Goat Anti-Rabbit IgG(H+L) at dilution 1:1000 (green), and 0.2 ug Control Antibody. Cells were fixed with 4% PFA and permeabilized with 0.1% TritonX-100.



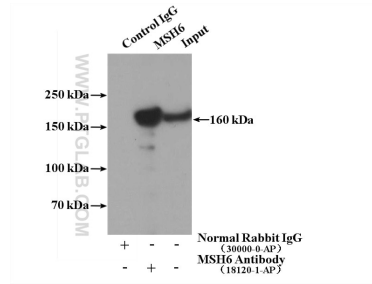
HEK-293 cells were subjected to SDS PAGE followed by western blot with 18120-1-AP (MSH6 antibody) at dilution of 1:500 incubated at room temperature for 1.5 hours.



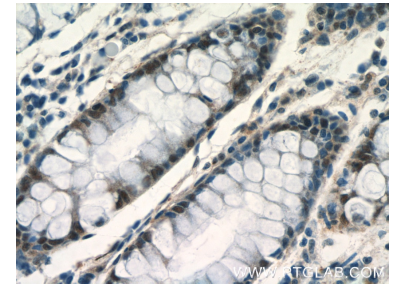
Immunofluorescent analysis of HeLa cells, using MSH6 antibody 18120-1-AP at 1:25 dilution and Rhodamine-labeled goat anti-rabbit IgG (red).



WB result of MSH6 antibody (18120-1-AP, 1:6000) with si-Control and si-MSH6 transfected HEK293 cells.



IP Result of anti-MSH6 (IP:18120-1-AP, 4ug; Detection:18120-1-AP 1:600) with HEK-293 cells lysate 1120ug.



Immunohistochemical analysis of paraffin-embedded human colon tissue slide using 18120-1-AP (MSH6 Antibody) at dilution of 1:200 (under 40x lens).