

À des fins de recherche uniquement

Anticorps Polyclonal de lapin anti-LHX2



Numéro de catalogue: 18133-1-AP **Phare**

Informations de base

Numéro de catalogue: 18133-1-AP	Numéro d'acquisition GenBank: BC093662	Méthode de purification: Purification par affinité contre l'antigène
Taille: 150ul , Concentration: 600 µg/ml by Nanodrop;	Identification du gène (NCBI): 9355	Dilutions recommandées: WB 1:500-1:2000
Hôte: Lapin	Nom complet: LIM homeobox 2	
Isotype: IgG	MW calculé: 406 aa, 44 kDa	
Immunogen Catalog Number: AG12717	MW observés: 50-55 kDa	

Applications

Applications testées: WB, ELISA	Contrôles positifs: WB : cellules A549, cellules Daudi, cellules Jurkat
Spécificité de l'espèce: Humain, rat, souris	

Informations générales

LHX proteins can activate or repress gene transcription by direct DNA binding and association with co-activators or co-repressors through their LIM domain. The LIM homeobox 2 (LHX2), also known as LH2, is a member of the LIM homeodomain family of proteins. LHX2 functions as a nuclear transcription co-factor and is reported to be involved in many important physiological processes, such as cell division, cell proliferation, specific cell-type differentiation, and cerebral cortex development. LHX2 promotes the growth and metastasis of nasopharyngeal carcinoma by regulating Wnt signaling and plays a vital role in breast cancer's progression and prognosis (PMID: 37345110).

Stockage

Stockage:
Stocker à -20°C. Stable pendant un an après l'expédition.
Tampon de stockage:
PBS avec azoture de sodium à 0,02 % et glycérol à 50 % pH 7,3
L'aliquotage n'est pas nécessaire pour le stockage à -20C

***** Les 20ul contiennent 0,1% de BSA.**

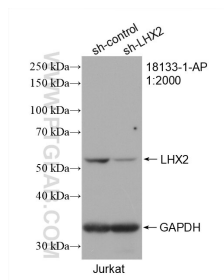
For technical support and original validation data for this product please contact:

T: 1 (888) 4PTGLAB (1-888-478-4522) (toll free in USA), or 1(312) 455-8498 (outside USA)

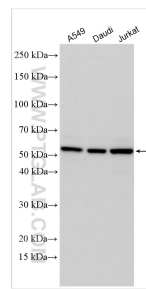
E: proteintech@ptglab.com
W: ptglab.com

This product is exclusively available under Proteintech Group brand and is not available to purchase from any other manufacturer.

Données de validation sélectionnées



WB result of LHX2 antibody (18133-1-AP; 1:2000; incubated at room temperature for 1.5 hours) with sh-Control and sh-LHX2 transfected Jurkat cells.



Various lysates were subjected to SDS PAGE followed by western blot with 18133-1-AP (LHX2 antibody) at dilution of 1:1000 incubated at room temperature for 1.5 hours.