

À des fins de recherche uniquement

# Anticorps Polyclonal de lapin anti-LYN



Numéro de catalogue: 18135-1-AP

1 Publications

## Informations de base

Numéro de catalogue:  
18135-1-AP

Taille:  
150ul, Concentration: 400 µg/ml by Nanodrop and 393 µg/ml by Bradford method using BSA as the standard;

Hôte:  
Lapin

Isotype:  
IgG

Immunogen Catalog Number:  
AG12723

Numéro d'acquisition GenBank:  
BC075002

Identification du gène (NCBI):  
4067

Nom complet:  
v-yes-1 Yamaguchi sarcoma viral related oncogene homolog

MW calculé:  
512 aa, 59 kDa

MW observés:  
53-56 kDa, 66-70 kDa

Méthode de purification:  
Purification par affinité contre l'antigène

Dilutions recommandées:  
WB 1:500-1:2000  
IP 0.5-4.0 ug for IP and 1:500-1:2000 for WB  
IHC 1:20-1:200  
IF 1:20-1:200

## Applications

Applications testées:  
FC, IF, IHC, IP, WB, ELISA

Demandes citées:  
IHC

Spécificité de l'espèce:  
Humain

Espèces citées:  
Humain

**Remarque-IHC: il est suggéré de démasquer l'antigène avec un tampon de TE buffer pH 9,0; (\*) A défaut, le démasquage de l'antigène peut être effectué avec un tampon citrate pH 6,0.**

Contrôles positifs:

WB : cellules HeLa, cellules HL-60, cellules Jurkat, cellules K-562, cellules L02

IP : cellules HeLa,

IHC : tissu rénal humain, tissu de cirrhose hépatique humain

IF : cellules HeLa,

## Informations générales

LYN, also named as JTK8, p53Lyn and p56Lyn, belongs to the protein kinase superfamily, Tyr protein kinase family and SRC subfamily. It is a non-receptor tyrosine-protein kinase that transmits signals from cell surface receptors and plays an important role in the regulation of innate and adaptive immune responses, hematopoiesis, responses to growth factors and cytokines, integrin signaling, but also responses to DNA damage and genotoxic agents. LYN is a component of the mTOR (mammalian target of rapamycin) pathway.

## Publications notables

Autrice	Pubmed ID	Journal	Application
Chonghua Jiang	35186945	Front Cell Dev Biol	IHC

## Stockage

Stockage:  
Stocker à -20°C. Stable pendant un an après l'expédition.

Tampon de stockage:  
PBS avec azoture de sodium à 0,02 % et glycérol à 50 % pH 7,3  
L'aliquotage n'est pas nécessaire pour le stockage à -20C

\*\*\* Les 20ul contiennent 0,1% de BSA.

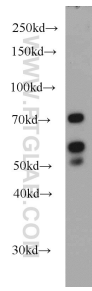
For technical support and original validation data for this product please contact:

T: 1 (888) 4PTGLAB (1-888-478-4522) (toll free in USA), or 1(312) 455-8498 (outside USA)

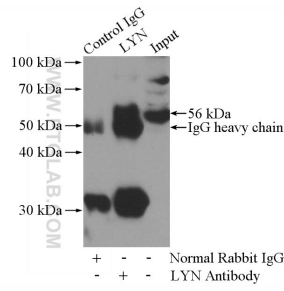
E: proteintech@ptglab.com  
W: ptglab.com

This product is exclusively available under Proteintech Group brand and is not available to purchase from any other manufacturer.

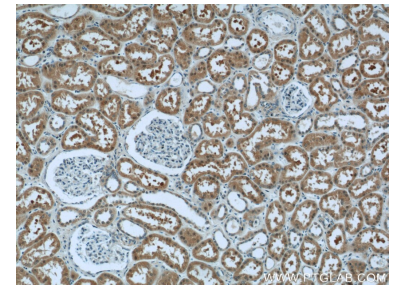
## Données de validation sélectionnées



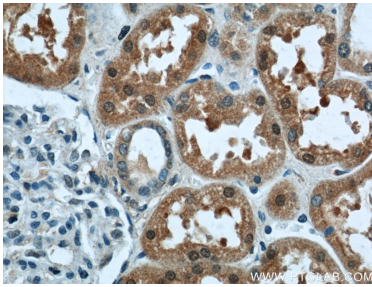
HeLa cells were subjected to SDS PAGE followed by western blot with 18135-1-AP (LYN antibody) at dilution of 1:1000 incubated at room temperature for 1.5 hours.



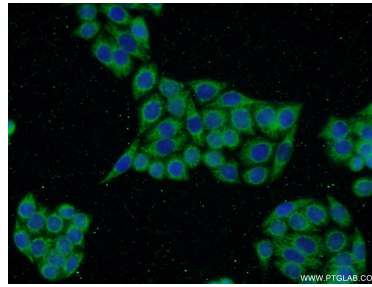
IP Result of anti-LYN (IP:18135-1-AP, 4ug; Detection:18135-1-AP 1:1000) with HeLa cells lysate 1200ug.



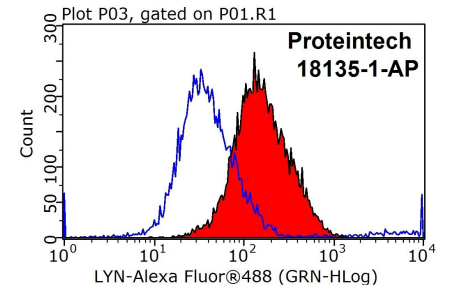
Immunohistochemical analysis of paraffin-embedded human kidney tissue slide using 18135-1-AP (LYN Antibody) at dilution of 1:50 (under 10x lens).



Immunohistochemical analysis of paraffin-embedded human kidney tissue slide using 18135-1-AP (LYN Antibody) at dilution of 1:50 (under 40x lens).



Immunofluorescent analysis of HeLa cells using 18135-1-AP (LYN antibody) at dilution of 1:50 and Alexa Fluor 488-conjugated AffiniPure Goat Anti-Rabbit IgG(H+L).



1X10<sup>6</sup> Jurkat cells were stained with 0.2ug LYN antibody (18135-1-AP, red) and control antibody (blue). Fixed with 90% MeOH blocked with 3% BSA (30 min). Alexa Fluor 488-conjugated AffiniPure Goat Anti-Rabbit IgG(H+L) with dilution 1:1000.