

À des fins de recherche uniquement

Anticorps Polyclonal de lapin anti-Importin Alpha 5



Numéro de catalogue: 18137-1-AP

Phare

23 Publications

Informations de base

Numéro de catalogue:
18137-1-AP

Taille:
150ul, Concentration: 300 µg/ml by Nanodrop and 173 µg/ml by Bradford method using BSA as the standard;

Hôte:
Lapin

Isotype:
IgG

Immunogen Catalog Number:
AG12751

Numéro d'acquisition GenBank:
BC002374

Identification du gène (NCBI):
3836

Nom complet:
karyopherin alpha 1 (importin alpha 5)

MW calculé:
60 kDa

MW observés:
60 kDa

Méthode de purification:
Purification par affinité contre l'antigène

Dilutions recommandées:
WB 1:500-1:5000
IP 0.5-4.0 ug for IP and 1:500-1:2000 for WB
IHC 1:50-1:500
IF 1:10-1:100

Applications

Applications testées:
IF, IHC, IP, WB, ELISA

Demandes citées:
CoIP, IF, IHC, IP, WB

Spécificité de l'espèce:
Humain, rat, souris

Espèces citées:
Humain, rat, souris

Remarque-IHC: il est suggéré de démasquer l'antigène avec un tampon de TE buffer pH 9,0; (*) A défaut, 'le démasquage de l'antigène peut être 'effectué avec un tampon citrate pH 6,0.

Contrôles positifs:

WB : cellules HEK-293, cellules HepG2, cellules Jurkat

IP : cellules HEK-293,

IHC : tissu testiculaire humain, tissu ovarien humain, tissu placentaire humain, tissu rénal humain

IF : cellules HepG2, cellules MCF-7

Informations générales

Importins (alpha and beta) are transport factors that transport proteins into the nucleus. alpha importins function by binding transcription factors at nuclear localization sequences (NLS), and associating with importin beta subunits to translocate through the nuclear pore. Six isoforms of alpha importins have been described in human. Importin alpha 5 is the predominant importin in adult CNS and is essential for differentiation and viability of neural cells.

Publications notables

Autrice	Pubmed ID	Journal	Application
Huanru Wang	31575039	Int J Mol Sci	WB
Hao Zeng	33532181	Acta Pharm Sin B	WB,IF
Youzhou Sang	31488827	Nat Commun	WB

Stockage

Stockage:

Stocker à -20°C. Stable pendant un an après l'expédition.

Tampon de stockage:

PBS avec azoture de sodium à 0,02 % et glycérol à 50 % pH 7,3

L'aliquotage n'est pas nécessaire pour le stockage à -20C

*** Les 20ul contiennent 0,1% de BSA.

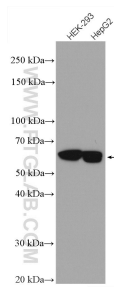
For technical support and original validation data for this product please contact:

T: 1 (888) 4PTGLAB (1-888-478-4522) (toll free in USA), or 1(312) 455-8498 (outside USA)

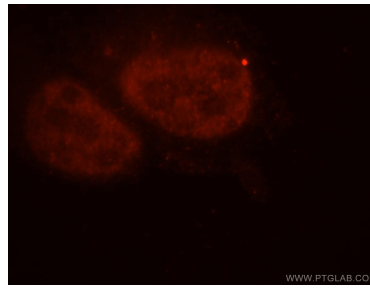
E: proteintech@ptglab.com
W: ptglab.com

This product is exclusively available under Proteintech Group brand and is not available to purchase from any other manufacturer.

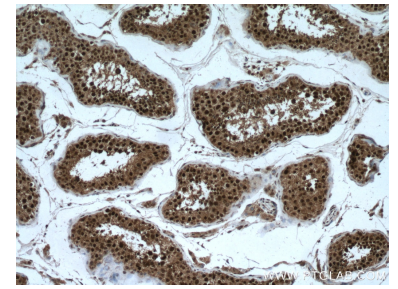
Données de validation sélectionnées



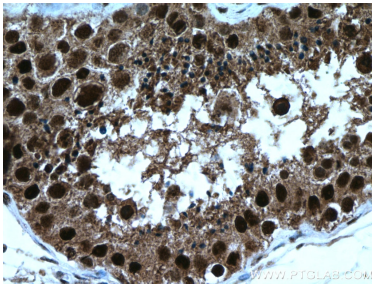
Various lysates were subjected to SDS PAGE followed by western blot with 18137-1-AP (importin $\alpha 5$ antibody) at dilution of 1:5000 incubated at room temperature for 1.5 hours.



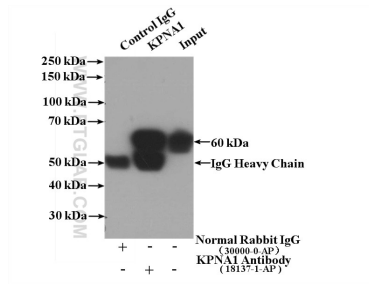
Immunofluorescent analysis of HepG2 cells, using KPNA1 antibody 18137-1-AP at 1:25 dilution and Rhodamine-labeled goat anti-rabbit IgG (red).



Immunohistochemical analysis of paraffin-embedded human testis tissue slide using 18137-1-AP (importin $\alpha 5$ antibody) at dilution of 1:200 (under 10x lens. Heat mediated antigen retrieval with Tris-EDTA buffer (pH 9.0).



Immunohistochemical analysis of paraffin-embedded human testis tissue slide using 18137-1-AP (importin $\alpha 5$ antibody) at dilution of 1:200 (under 40x lens. Heat mediated antigen retrieval with Tris-EDTA buffer (pH 9.0).



IP Result of anti-importin $\alpha 5$ (IP:18137-1-AP, 4 μ g; Detection:18137-1-AP 1:1000) with HEK-293 cells lysate 1480 μ g.