

À des fins de recherche uniquement

Anticorps Polyclonal de lapin anti-ABCD1



Numéro de catalogue: 18138-1-AP

Phare

2 Publications

Informations de base

Numéro de catalogue:
18138-1-AP

Taille:
150ul, Concentration: 600 µg/ml by
Nanodrop;

Hôte:
Lapin

Isotype:
IgG

Immunogen Catalog Number:
AG12757

Numéro d'acquisition GenBank:
BC025358

Identification du gène (NCBI):
215

Nom complet:
ATP-binding cassette, sub-family D
(ALD), member 1

MW calculé
745 aa, 83 kDa

MW observés:
75 kDa

Méthode de purification:
Purification par affinité contre
l'antigène

Dilutions recommandées:
WB 1:500-1:3000
IP 0.5-4.0 ug for IP and 1:500-1:1000
for WB

Applications

Applications testées:
FC, IP, WB, ELISA

Demandes citées:
WB

Spécificité de l'espèce:
Humain

Espèces citées:
Humain

Contrôles positifs:

WB : cellules HepG2, cellules HeLa

IP : cellules HeLa,

Informations générales

ABCD1 (also known as ALDP) is a member of the ATP-binding cassette (ABC) transporter superfamily which functions as transporter for a wide variety of substrates. It localizes to the peroxisomal membrane. The exact function is not clear so far. Various mutations of ABCD1 cause X-linked adrenoleukodystrophy (X-ALD), an inherited neurodegenerative disease affecting the nervous system white matter and adrenal cortex.

Publications notables

Autrice	Pubmed ID	Journal	Application
Tatsuo Miyamoto	32368833	EMBO J	WB
Chao Xiong	36810450	Signal Transduct Target Ther	WB

Stockage

Stockage:

Stocker à -20°C. Stable pendant un an après l'expédition.

Tampon de stockage:

PBS avec azoture de sodium à 0,02 % et glycérol à 50 % pH 7,3

L'aliquotage n'est pas nécessaire pour le stockage à -20C

*** Les 20ul contiennent 0,1% de BSA.

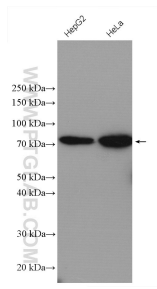
For technical support and original validation data for this product please contact:

T: 1 (888) 4PTGLAB (1-888-478-4522) (toll free
in USA), or 1(312) 455-8498 (outside USA)

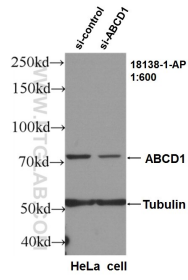
E: proteintech@ptglab.com
W: ptglab.com

This product is exclusively available under Proteintech Group brand and is not available to purchase from any other manufacturer.

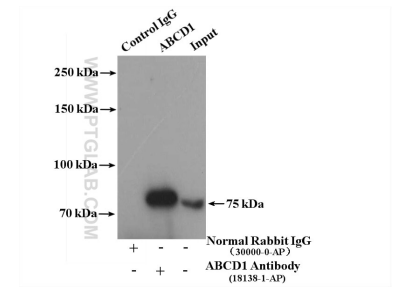
Données de validation sélectionnées



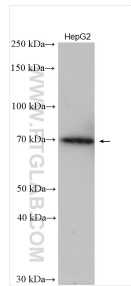
Various lysates were subjected to SDS PAGE followed by western blot with 18138-1-AP (ABCD1 antibody) at dilution of 1:600 incubated at room temperature for 1.5 hours.



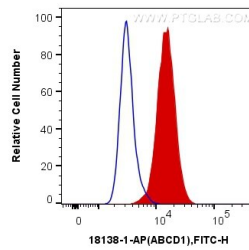
WB result of ABCD1 antibody (18138-1-AP, 1:600) with si-Control and si-ABCD1 transfected HeLa cells..



IP result of anti-ABCD1 (IP:18138-1-AP, 4ug; Detection:18138-1-AP 1:700) with HeLa cells lysate 3000 ug.



HepG2 cells were subjected to SDS PAGE followed by western blot with 18138-1-AP (ABCD1 antibody) at dilution of 1:1500 incubated at room temperature for 1.5 hours.



1X10⁶ HeLa cells were intracellularly stained with 0.4 ug Anti-Human ABCD1 (18138-1-AP) and CoraLite®488-Conjugated AffiniPure Goat Anti-Rabbit IgG(H+L) at dilution 1:1000 (red), or 0.4 ug Control Antibody. Cells were fixed with 4% PFA and permeabilized with Flow Cytometry Perm Buffer (PF00011-C).