

À des fins de recherche uniquement

Anticorps Polyclonal de lapin anti-GYPC



Numéro de catalogue: 18147-1-AP

Informations de base

Numéro de catalogue: 18147-1-AP	Numéro d'acquisition GenBank: BC106051	Méthode de purification: Purification par affinité contre l'antigène
Taille: 150ul , Concentration: 900 µg/ml by Nanodrop and 407 µg/ml by Bradford method using BSA as the standard;	Identification du gène (NCBI): 2995	Dilutions recommandées: WB 1:1000-1:4000 IHC 1:500-1:2000 IF 1:400-1:1600
Hôte: Lapin	Nom complet: glycophorin C (Gerbich blood group)	
Isotype: IgG	MW calculé 128 aa, 14 kDa	
Immunogen Catalog Number: AG12825	MW observés: 37 kDa	

Applications

Applications testées: IF, IHC, WB, ELISA	Contrôles positifs: WB : sang humain, IHC : tissu placentaire humain, tissu splénique humain IF : tissu placentaire humain,
Spécificité de l'espèce: Humain	
Remarque-IHC: <i>il est suggéré de démasquer l'antigène avec un tampon de TE buffer pH 9.0; (*) À défaut, 'le démasquage de l'antigène peut être 'effectué avec un tampon citrate pH 6,0.</i>	

Informations générales

Glycophorin-C, encoded by the GYPC gene, is a minor sialoglycoprotein in human erythrocyte membranes. Glycophorin-C interacts with protein 4.1R (EPB41) and plays an important role in regulating the mechanical stability of red cells. Glycophorin C acts as the receptor for the Plasmodium falciparum erythrocyte binding ligand PfEBP-2 (baebl). Glycophorin-D, also encoded by the GYPC gene, is now known as a variant of Glycophorin-C. This antibody is raised against the full-length protein of human Glycophorin-C. The apparent molecular weight of Glycophorin-C is larger than the calculated molecular weight due to glycosylation.

Stockage

Stockage:
Stocker à -20°C. Stable pendant un an après l'expédition.
Tampon de stockage:
PBS avec azoture de sodium à 0,02 % et glycérol à 50 % pH 7,3
L'aliquotage n'est pas nécessaire pour le stockage à -20C

*** Les 20ul contiennent 0,1% de BSA.

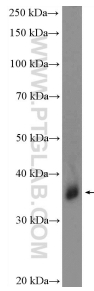
For technical support and original validation data for this product please contact:

T: 1 (888) 4PTGLAB (1-888-478-4522) (toll free in USA), or 1(312) 455-8498 (outside USA)

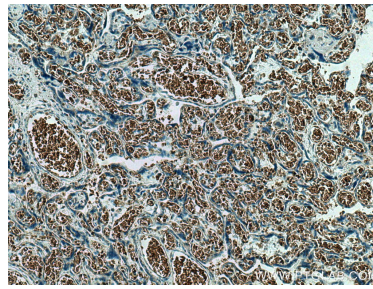
E: proteintech@ptglab.com
W: ptglab.com

This product is exclusively available under Proteintech Group brand and is not available to purchase from any other manufacturer.

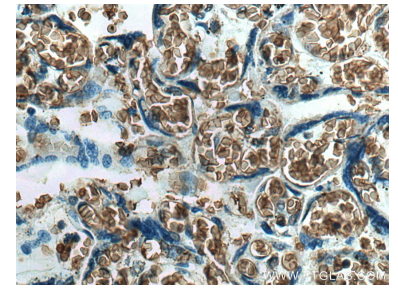
Données de validation sélectionnées



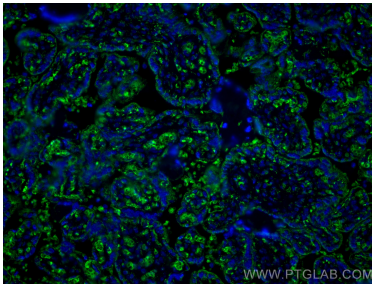
human blood were subjected to SDS PAGE followed by western blot with 18147-1-AP (GYPC antibody) at dilution of 1:2000 incubated at room temperature for 1.5 hours.



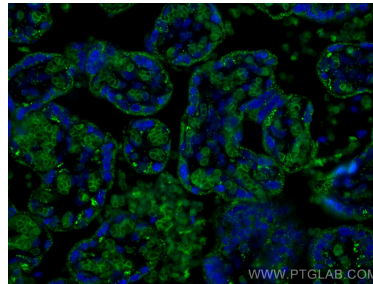
Immunohistochemical analysis of paraffin-embedded human placenta tissue slide using 18147-1-AP (GYPC antibody) at dilution of 1:1000 (under 10x lens). Heat mediated antigen retrieval with Tris-EDTA buffer (pH 9.0).



Immunohistochemical analysis of paraffin-embedded human placenta tissue slide using 18147-1-AP (GYPC antibody) at dilution of 1:1000 (under 40x lens). Heat mediated antigen retrieval with Tris-EDTA buffer (pH 9.0).



Immunofluorescent analysis of (4% PFA) fixed human placenta tissue using GYPC antibody (18147-1-AP) at dilution of 1:800 and CoraLite®488-Conjugated AffiniPure Goat Anti-Rabbit IgG(H+L).



Immunofluorescent analysis of (4% PFA) fixed human placenta tissue using GYPC antibody (18147-1-AP) at dilution of 1:800 and CoraLite®488-Conjugated AffiniPure Goat Anti-Rabbit IgG(H+L).