

À des fins de recherche uniquement

# Anticorps Polyclonal de lapin anti-Podocalyxin



Numéro de catalogue: 18150-1-AP

Phare

9 Publications

## Informations de base

Numéro de catalogue:  
18150-1-AP

Taille:  
150ul, Concentration: 500 µg/ml by Nanodrop and 260 µg/ml by Bradford method using BSA as the standard;

Hôte:  
Lapin

Isotype:  
IgG

Immunogen Catalog Number:  
AG12844

Numéro d'acquisition GenBank:  
BC093730

Identification du gène (NCBI):  
5420

Nom complet:  
podocalyxin-like

MW calculé  
526 aa, 55 kDa

MW observés:  
60-70 kDa

Méthode de purification:  
Purification par affinité contre l'antigène

Dilutions recommandées:  
WB 1:500-1:1000  
IHC 1:500-1:4000  
IF 1:400-1:1600

## Applications

Applications testées:  
FC, IF, IHC, WB, ELISA

Demandes citées:  
FC, IF, WB

Spécificité de l'espèce:  
Humain

Espèces citées:  
Humain

**Remarque-IHC: il est suggéré de démasquer l'antigène avec un tampon de TE buffer pH 9,0; (\*) A défaut, le démasquage de l'antigène peut être effectué avec un tampon citrate pH 6,0.**

Contrôles positifs:

WB : tissu rénal humain, cellules HEK-293, cellules HepG2

IHC : tissu rénal humain,

IF : tissu rénal humain,

## Informations générales

Podocalyxin, also known as podocalyxin-like protein 1 (PODXL or PCLP1), is a transmembrane glycoprotein belonging to the CD34 family of sialomucins. Podocalyxin was originally identified as the major sialoprotein on podocytes of the kidney glomerulus, but was later found to be expressed on vascular endothelial cells and early hematopoietic progenitors. It involved in the regulation of both adhesion and cell morphology. In addition, podocalyxin is highly expressed in embryonic stem cells and aberrant expression of podocalyxin has been implicated in a wide range of cancers. Podocalyxin is a protein with a peptide bone of 55.5 kDa that undergoes a post-translational glycosylation, the different molecular mass of podocalyxin indicates the extent and variability of glycosylation patterns (PMID: 17092254).

## Publications notables

Autrice	Pubmed ID	Journal	Application
Rohit Budhreja	36102038	J Inherit Metab Dis	WB
Julie Bejoy	34746862	STAR Protoc	IF
Akiko Tanoue	34654837	Sci Rep	WB

## Stockage

Stockage:

Stocker à -20°C. Stable pendant un an après l'expédition.

Tampon de stockage:

PBS avec azoture de sodium à 0,02 % et glycérol à 50 % pH 7,3

L'aliquotage n'est pas nécessaire pour le stockage à -20C

\*\*\* Les 20ul contiennent 0,1% de BSA.

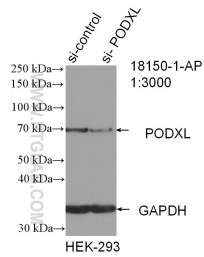
For technical support and original validation data for this product please contact:

T: 1 (888) 4PTGLAB (1-888-478-4522) (toll free in USA), or 1(312) 455-8498 (outside USA)

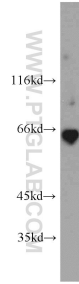
E: proteintech@ptglab.com  
W: ptglab.com

This product is exclusively available under Proteintech Group brand and is not available to purchase from any other manufacturer.

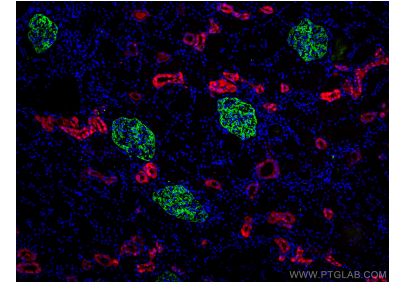
## Données de validation sélectionnées



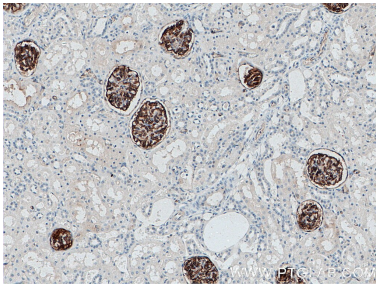
WB result of Podocalyxin antibody (18150-1-AP; 1:3000; incubated at room temperature for 1.5 hours) with sh-Control and sh-Podocalyxin transfected HEK-293 cells.



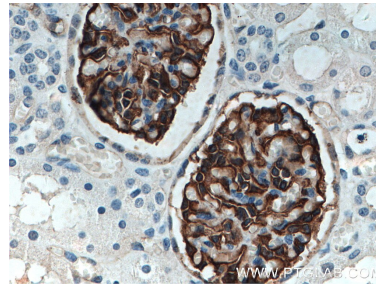
human kidney tissue were subjected to SDS PAGE followed by western blot with 18150-1-AP (PODXL antibody) at dilution of 1:500 incubated at room temperature for 1.5 hours.



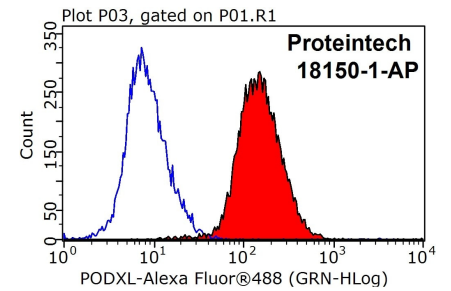
Immunofluorescent analysis of (4% PFA) fixed human kidney tissue using Podocalyxin antibody (18150-1-AP) at dilution of 1:800 and CoraLite®488-Conjugated AffiniPure Goat Anti-Rabbit IgG(H+L), Calbindin-D28k antibody (66394-1-Ig, Clone: 1F8B9, red).



Immunohistochemical analysis of paraffin-embedded human kidney tissue slide using 18150-1-AP (Podocalyxin antibody) at dilution of 1:4000 (under 10x lens. Heat mediated antigen retrieval with Tris-EDTA buffer (pH 9.0).



Immunohistochemical analysis of paraffin-embedded human kidney tissue slide using 18150-1-AP (Podocalyxin antibody) at dilution of 1:4000 (under 40x lens. Heat mediated antigen retrieval with Tris-EDTA buffer (pH 9.0).



1X10<sup>6</sup> HeLa cells were stained with 0.2ug Podocalyxin antibody (18150-1-AP, red) and control antibody (blue). Fixed with 90% MeOH blocked with 3% BSA (30 min). Alexa Fluor 488-conjugated AffiniPure Goat Anti-Rabbit IgG(H+L) with dilution 1:1000.