

À des fins de recherche uniquement

# Anticorps Polyclonal de lapin anti-TEM1



Numéro de catalogue: 18160-1-AP

10 Publications

## Informations de base

Numéro de catalogue:

18160-1-AP

Taille:

150ul, Concentration: 400 µg/ml by Nanodrop and 233 µg/ml by Bradford method using BSA as the standard;

Hôte:

Lapin

Isotype:

IgG

Immunogen Catalog Number:

AG12990

Numéro d'acquisition GenBank:

BC051340

Identification du gène (NCBI):

57124

Nom complet:

CD248 molecule, endosialin

MW calculé

757 aa, 81 kDa

MW observés:

81 kDa

Méthode de purification:

Purification par affinité contre l'antigène

Dilutions recommandées:

WB 1:500-1:1000

## Applications

Applications testées:

FC, WB, ELISA

Demandes citées:

CoIP, FC, IF, IHC, WB

Spécificité de l'espèce:

Humain, rat, souris

Espèces citées:

Humain, rat, souris

Contrôles positifs:

WB : cellules HeLa, cellules A375, cellules COLO 320, cellules HEK-293, cellules NIH/3T3, cellules SH-SY5Y, tissu cardiaque de souris, tissu de côlon de souris, tissu d'estomac de souris

## Informations générales

TEM1 (Tumor endothelial marker 1), also named as CD248, Endosialin and CD164L1, is a C-type lectin-like domain (CTL) containing type I transmembrane glycoprotein. It is now considered to be a highly selective marker for activated perivascular and stromal cells, detected in most cancers and at least some inflammatory disorders. CD248 plays a role in tumor angiogenesis. It is a potential diagnostic tool and therapeutic target of inflammatory and malignant disease. Two isoforms of human TEM1 exist. The calculated molecular weights of the two isoforms are 81 kDa and 46 kDa, respectively. Native TEM1 can be glycosylated, and the glycosylated form has a larger apparent molecular weight than 81 kDa.

## Publications notables

Autrice	Pubmed ID	Journal	Application
Cheng-Hsiang Kuo	36401329	J Biomed Sci	WB,IHC
Shaojie Liu	35317721	Mol Med	WB,IHC,IF,FC
Fa Yang	32591411	Cancer Res	IF

## Stockage

Stockage:

Stocker à -20°C. Stable pendant un an après l'expédition.

Tampon de stockage:

PBS avec azoture de sodium à 0,02 % et glycérol à 50 % pH 7,3

L'aliquotage n'est pas nécessaire pour le stockage à -20C

\*\*\* Les 20ul contiennent 0,1% de BSA.

For technical support and original validation data for this product please contact:

T: 1 (888) 4PTGLAB (1-888-478-4522) (toll free in USA), or 1(312) 455-8498 (outside USA)

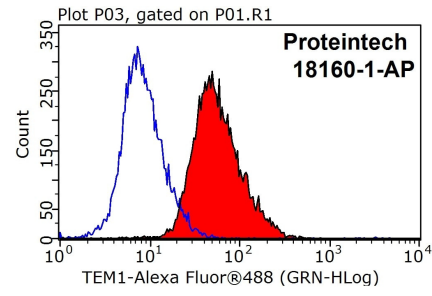
E: [proteintech@ptglab.com](mailto:proteintech@ptglab.com)  
W: [ptglab.com](http://ptglab.com)

This product is exclusively available under Proteintech Group brand and is not available to purchase from any other manufacturer.

## Données de validation sélectionnées



HeLa cells were subjected to SDS PAGE followed by western blot with 18160-1-AP (TEM1 antibody) at dilution of 1:500 incubated at room temperature for 1.5 hours.



1X10<sup>6</sup> HeLa cells were stained with 0.2ug TEM1 antibody (18160-1-AP, red) and control antibody (blue). Fixed with 90% MeOH blocked with 3% BSA (30 min). Alexa Fluor 488-conjugated AffiniPure Goat Anti-Rabbit IgG(H+L) with dilution 1:1000.