

À des fins de recherche uniquement

Anticorps Polyclonal de lapin anti-PMS2



Numéro de catalogue: 18164-1-AP

Informations de base

Numéro de catalogue: 18164-1-AP	Numéro d'acquisition GenBank: BC093921	Méthode de purification: Purification par affinité contre l'antigène
Taille: 150ul , Concentration: 350 µg/ml by Nanodrop;	Identification du gène (NCBI): 5395	Dilutions recommandées: WB 1:2000-1:10000
Hôte: Lapin	Nom complet: PMS2 postmeiotic segregation increased 2 (S. cerevisiae)	
Isotype: IgG	MW calculé 862 aa, 96 kDa	
Immunogen Catalog Number: AG12651	MW observés: 117 kDa, 100 kDa	

Applications

Applications testées: WB, ELISA	Contrôles positifs: WB : cellules A431, cellules Jurkat, cellules MCF-7, cellules PC-3, cellules Raji
Spécificité de l'espèce: Humain, rat, souris	

Informations générales

PMS2, also named as PMSL2, belongs to the DNA mismatch repair mutL/hexB family. It is a component of the post-replicative DNA mismatch repair system (MMR). It heterodimerizes with MLH1 to form MutL alpha. MuL alpha (MLH1-PMS2) interacts physically with the clamp loader subunits of DNA polymerase III, suggesting that it may play a role to recruit the DNA polymerase III to the site of the MMR. It also implicated in DNA damage signaling, a process which induces cell cycle arrest and can lead to apoptosis in case of major DNA damages. (PMID: 16873062, PMID: 18206974) Defects in PMS2 are the cause of hereditary non-polyposis colorectal cancer type 4 (HNPCC4). Defects in PMS2 are a cause of mismatch repair cancer syndrome (MMRCS). This antibody is specific to PMS2. The calculated molecular weight of PMS2 is 96 kDa, but the modified PMS2 is about 117 kDa.(PMID: 11358834)

Stockage

Stockage:
Stocker à -20°C. Stable pendant un an après l'expédition.
Tampon de stockage:
PBS avec azoture de sodium à 0,02 % et glycérol à 50 % pH 7,3
L'aliquotage n'est pas nécessaire pour le stockage à -20C

*** Les 20ul contiennent 0,1% de BSA.

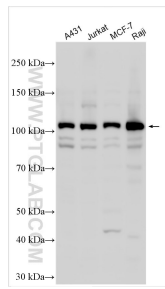
For technical support and original validation data for this product please contact:

T: 1 (888) 4PTGLAB (1-888-478-4522) (toll free in USA), or 1(312) 455-8498 (outside USA)

E: proteintech@ptglab.com
W: ptglab.com

This product is exclusively available under Proteintech Group brand and is not available to purchase from any other manufacturer.

Données de validation sélectionnées



Various lysates were subjected to SDS PAGE followed by western blot with 18164-1-AP (PMS2 antibody) at dilution of 1:5000 incubated at room temperature for 1.5 hours.