

À des fins de recherche uniquement

Anticorps Polyclonal de lapin anti-MMP13



Numéro de catalogue: 18165-1-AP

317 Publications

Informations de base

Numéro de catalogue:

18165-1-AP

Taille:

150ul, Concentration: 600 µg/ml by Nanodrop;

Hôte:

Lapin

Isotype:

IgG

Immunogen Catalog Number:

AG12653

Numéro d'acquisition GenBank:

BC074808

Identification du gène (NCBI):

4322

Nom complet:

matrix metallopeptidase 13

MW calculé

471 aa, 54 kDa

MW observés:

65-70 kDa, 50-55 kDa, 40 kDa

Méthode de purification:

Purification par affinité contre l'antigène

Dilutions recommandées:

WB 1:1000-1:4000

IP 0.5-4.0 ug for IP and 1:200-1:1000 for WB

IHC 1:50-1:500

IF 1:50-1:500

Applications

Applications testées:

IF, IHC, IP, WB, ELISA

Demandes citées:

IF, IHC, WB

Spécificité de l'espèce:

Humain, rat, souris

Espèces citées:

bovin, Humain, Lapin, poisson-zèbre, porc, rat, souris

Remarque-IHC: il est suggéré de démasquer l'antigène avec un tampon de TE buffer pH 9,0; (*) À défaut, 'le démasquage de l'antigène peut être effectué avec un tampon citrate pH 6,0.

Contrôles positifs:

WB : cellules HeLa, cellules MCF-7, cellules MDA-MB-453s, tissu hépatique de rat, tissu hépatique de souris

IP : cellules MCF-7,

IHC : tissu de cancer du sein humain, tissu de cancer du foie humain, tissu de cirrhose hépatique humaine, tissu hépatique de souris

IF : cellules MCF-7,

Informations générales

MMP-13 (Matrix metalloproteinase-13), cleaves type I collagen and was previously thought to be the rodent analogue of human interstitial MMP-1. MMP-13 is found in hypertrophic and calcifying cartilage of mammalian growth plate. The bands seen with rat MMP-13 are consistent with a 59-kDa latent form and a 43-kDa active form reported for this enzyme, along with a smaller band at approximately 30 kDa (PMID:10771523). It also can be detected 3 bands that the glycosylated proMMP-13 (70 kDa), unglycosylated proform (55 kDa), and active MMP-13 enzyme (40kDa) by western blot (PMID:18332263).

Publications notables

Autrice	Pubmed ID	Journal	Application
Yangfei Yi	36178080	Orthop Surg	WB, IHC
Yanlin Cao	34593020	Arthritis Res Ther	WB
Yangke Cai	29097832	Dis Markers	WB

Stockage

Stockage:

Stocker à -20°C. Stable pendant un an après l'expédition.

Tampon de stockage:

PBS avec azoture de sodium à 0,02 % et glycérol à 50 % pH 7,3

L'aliquotage n'est pas nécessaire pour le stockage à -20C

*** Les 20ul contiennent 0,1% de BSA.

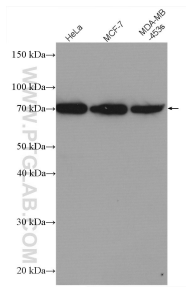
For technical support and original validation data for this product please contact:

T: 1 (888) 4PTGLAB (1-888-478-4522) (toll free in USA), or 1(312) 455-8498 (outside USA)

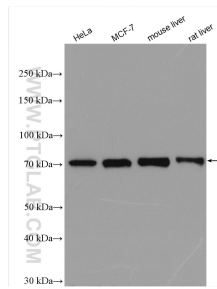
E: proteintech@ptglab.com
W: ptglab.com

This product is exclusively available under Proteintech Group brand and is not available to purchase from any other manufacturer.

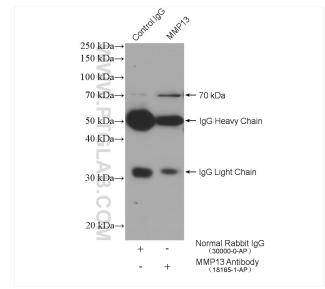
Données de validation sélectionnées



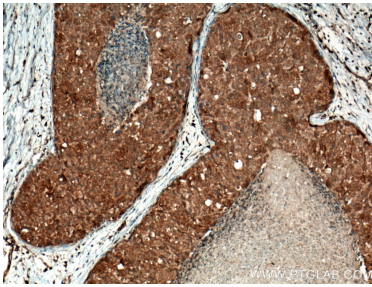
Various lysates were subjected to SDS PAGE followed by western blot with 18165-1-AP (MMP13 antibody) at dilution of 1:500 incubated at room temperature for 1.5 hours.



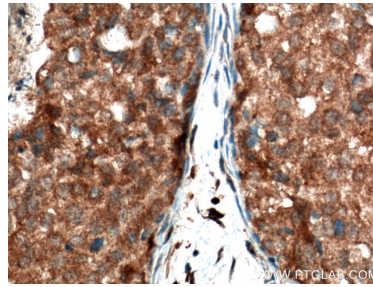
Various lysates were subjected to SDS PAGE followed by western blot with 18165-1-AP (MMP13 antibody) at dilution of 1:2000 incubated at room temperature for 1.5 hours.



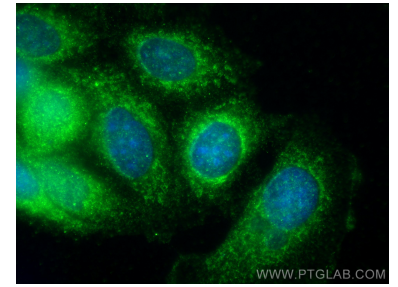
IP result of anti-MMP13 (IP:18165-1-AP, 4ug; Detection:18165-1-AP 1:300) with MCF-7 cells lysate 2480 ug.



Immunohistochemical analysis of paraffin-embedded human breast cancer tissue slide using 18165-1-AP (MMP13 antibody) at dilution of 1:200 (under 10x lens. Heat mediated antigen retrieval with Tris-EDTA buffer (pH 9.0).



Immunohistochemical analysis of paraffin-embedded human breast cancer tissue slide using 18165-1-AP (MMP13 antibody) at dilution of 1:200 (under 40x lens. Heat mediated antigen retrieval with Tris-EDTA buffer (pH 9.0).



Immunofluorescent analysis of (-20°C Methanol) fixed MCF-7 cells using MMP13 antibody (18165-1-AP) at dilution of 1:200 and CoraLite®488-Conjugated AffiniPure Goat Anti-Rabbit IgG(H+L).