

À des fins de recherche uniquement

Anticorps Polyclonal de lapin anti-CLEC4G



Numéro de catalogue: 18173-1-AP

Informations de base

Numéro de catalogue: 18173-1-AP	Numéro d'acquisition GenBank: BC093691	Méthode de purification: Purification par affinité contre l'antigène
Taille: 150ul, Concentration: 350 µg/ml by Nanodrop and 313 µg/ml by Bradford method using BSA as the standard;	Identification du gène (NCBI): 339390	Dilutions recommandées: IHC 1:500-1:2000 IF 1:50-1:500
Hôte: Lapin	Nom complet: C-type lectin domain family 4, member G	
Isotype: IgG	MW calculé: 293 aa, 33 kDa	
Immunogen Catalog Number: AG12837	MW observés: 40 kDa	

Applications

Applications testées: IF, IHC, ELISA	Contrôles positifs: IHC : tissu hépatique humain, tissu d'amygdales humaines IF : tissu hépatique humain,
Spécificité de l'espèce: Humain	
Remarque-IHC: il est suggéré de démasquer l'antigène avec un tampon de TE buffer pH 9.0; (*) À défaut, le démasquage de l'antigène peut être effectué avec un tampon citrate pH 6,0.	

Informations générales

CLEC4G, also known as LSECtin, is a member of the C-type lectin family of glycan-binding receptors that is expressed on sinusoidal endothelial cells in liver and lymph nodes. CLEC4G is a type II transmembrane protein of 40 kDa in size with a single C-type lectin-like domain at the COOH terminus, closest in homology to DC-SIGNR, DC-SIGN, and CD23. CLEC4G has been reported as a receptor for Japanese encephalitis virus (PubMed:24623090), ebolavirus (PubMed:16051304), SARS coronavirus/SARS-CoV (PubMed:16051304), lassa virus and Lymphocytic choriomeningitis virus glycoprotein (PubMed:22156524, PubMed:22673088).

Stockage

Stockage:
Stocker à -20°C. Stable pendant un an après l'expédition.
Tampon de stockage:
PBS avec azoture de sodium à 0,02 % et glycérol à 50 % pH 7,3
L'aliquotage n'est pas nécessaire pour le stockage à -20C

*** Les 20ul contiennent 0,1% de BSA.

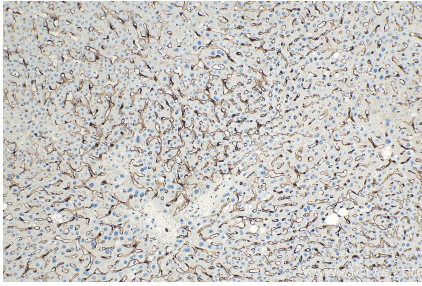
For technical support and original validation data for this product please contact:

T: 1 (888) 4PTGLAB (1-888-478-4522) (toll free in USA), or 1(312) 455-8498 (outside USA)

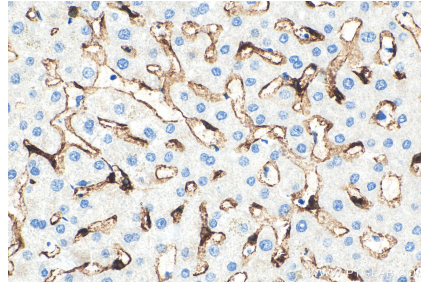
E: proteintech@ptglab.com
W: ptglab.com

This product is exclusively available under Proteintech Group brand and is not available to purchase from any other manufacturer.

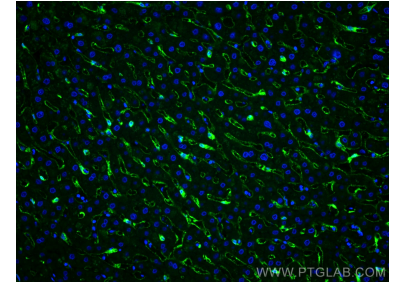
Données de validation sélectionnées



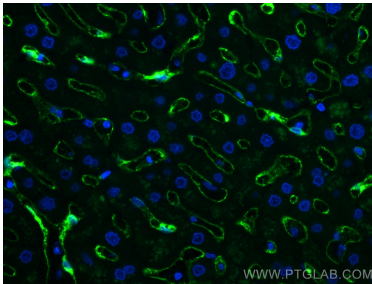
Immunohistochemical analysis of paraffin-embedded human liver tissue slide using 18173-1-AP (CLEC4G antibody) at dilution of 1:1000 (under 10x lens). Heat mediated antigen retrieval with Tris-EDTA buffer (pH 9.0).



Immunohistochemical analysis of paraffin-embedded human liver tissue slide using 18173-1-AP (CLEC4G antibody) at dilution of 1:1000 (under 40x lens). Heat mediated antigen retrieval with Tris-EDTA buffer (pH 9.0).



Immunofluorescent analysis of (4% PFA) fixed human liver tissue using CLEC4G antibody (18173-1-AP) at dilution of 1:200 and CoraLite@488-Conjugated AffiniPure Goat Anti-Rabbit IgG(H+L).



Immunofluorescent analysis of (4% PFA) fixed human liver tissue using CLEC4G antibody (18173-1-AP) at dilution of 1:200 and CoraLite@488-Conjugated AffiniPure Goat Anti-Rabbit IgG(H+L).