

À des fins de recherche uniquement

# Anticorps Polyclonal de lapin anti-RBM24



Numéro de catalogue: 18178-1-AP

Phare

7 Publications

## Informations de base

<b>Numéro de catalogue:</b> 18178-1-AP	<b>Numéro d'acquisition GenBank:</b> BC104808	<b>Méthode de purification:</b> Purification par affinité contre l'antigène
<b>Taille:</b> 150ul, Concentration: 700 µg/ml by Nanodrop;	<b>Identification du gène (NCBI):</b> 221662	<b>Dilutions recommandées:</b> WB 1:500-1:1000 IHC 1:20-1:200 IF 1:50-1:500
<b>Hôte:</b> Lapin	<b>Nom complet:</b> RNA binding motif protein 24	
<b>Isotype:</b> IgG	<b>MW calculé:</b> 191 aa, 20 kDa	
<b>Immunogen Catalog Number:</b> AG12871	<b>MW observés:</b> 20-27 kDa	

## Applications

### Applications testées:

IF, IHC, WB, ELISA

### Demandes citées:

IF, IHC, RIP

### Spécificité de l'espèce:

Humain, rat, souris

### Espèces citées:

Humain, poulet, souris

### Contrôles positifs:

WB : tissu cardiaque de souris, cellules HeLa

IHC : tissu de muscle squelettique humain,

IF : tissu de muscle squelettique de souris,

**Remarque-IHC: il est suggéré de démasquer l'antigène avec un tampon de TE buffer pH 9,0; (\*) À défaut, le démasquage de l'antigène peut être effectué avec un tampon citrate pH 6,0.**

## Informations générales

RNA-binding proteins have a pivotal role in post-transcriptionally regulating gene expression. During early development they exhibit temporally and spatially regulated expression pattern, and affect the proteome of a single cell by controlling alternative splicing, transport, localization, and stability of their target RNAs [PMID:22510371]. Their expression are tissue-specific, and their crucial influence on the protein set-up especially in muscle cells has become recognized recently [PMID:21982546]. RBM24 is one RNA-binding protein and plays a fundamental role in regulating cardiac gene expression, sarcomeric assembly, and cardiac contractility and may thus represent a novel pathway to cardiomyopathy [PMID:20338237].

## Publications notables

Autrice	Pubmed ID	Journal	Application
Raphaëlle Grifone	25217815	Mech Dev	IF
Suhong Sun	34477109	Elife	IF
Shulei Gong	36352154	J Mol Med (Berl)	IHC,RIP

## Stockage

### Stockage:

Stocker à -20°C. Stable pendant un an après l'expédition.

### Tampon de stockage:

PBS avec azoture de sodium à 0,02 % et glycérol à 50 % pH 7,3

L'aliquotage n'est pas nécessaire pour le stockage à -20C

\*\*\* Les 20ul contiennent 0,1% de BSA.

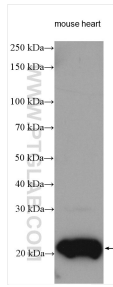
For technical support and original validation data for this product please contact:

T: 1 (888) 4PTGLAB (1-888-478-4522) (toll free in USA), or 1(312) 455-8498 (outside USA)

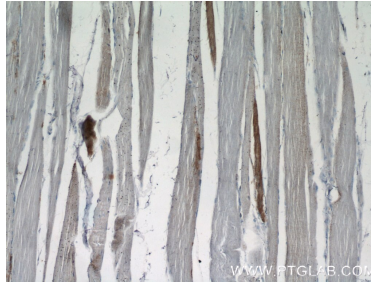
E: proteintech@ptglab.com  
W: ptglab.com

This product is exclusively available under Proteintech Group brand and is not available to purchase from any other manufacturer.

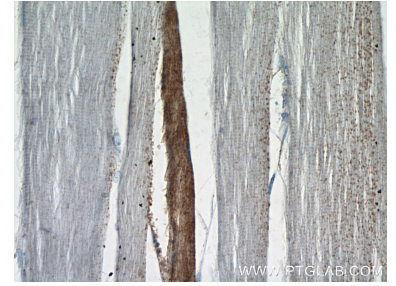
## Données de validation sélectionnées



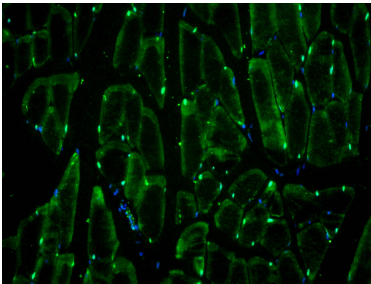
mouse heart tissue lysates were subjected to SDS PAGE followed by western blot with 18178-1-AP (RBM24 antibody) at dilution of 1:800 incubated at room temperature for 1.5 hours.



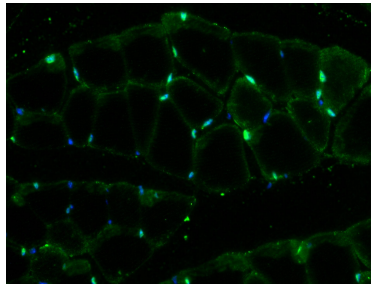
Immunohistochemical analysis of paraffin-embedded human skeletal muscle tissue slide using 18178-1-AP (RBM24 Antibody) at dilution of 1:50 (under 10x lens).



Immunohistochemical analysis of paraffin-embedded human skeletal muscle tissue slide using 18178-1-AP (RBM24 Antibody) at dilution of 1:50 (under 40x lens).



Immunofluorescent analysis of (4% PFA) fixed mouse skeletal muscle tissue using RBM24 antibody (18178-1-AP) at dilution of 1:200 and CoraLite®488-Conjugated AffiniPure Goat Anti-Rabbit IgG(H+L).



Immunofluorescent analysis of (4% PFA) fixed mouse skeletal muscle tissue using RBM24 antibody (18178-1-AP) at dilution of 1:200 and CoraLite®488-Conjugated AffiniPure Goat Anti-Rabbit IgG(H+L).