

À des fins de recherche uniquement

# Anticorps Polyclonal de lapin anti-LACTB



Numéro de catalogue: 18195-1-AP

Phare

7 Publications

## Informations de base

Numéro de catalogue:

18195-1-AP

Taille:

150ul, Concentration: 500 µg/ml by Nanodrop and 367 µg/ml by Bradford method using BSA as the standard;

Hôte:

Lapin

Isotype:

IgG

Immunogen Catalog Number:

AG12233

Numéro d'acquisition GenBank:

BC067288

Identification du gène (NCBI):

114294

Nom complet:

lactamase, beta

MW calculé

547 aa, 61 kDa

MW observés:

50-60 kDa

Méthode de purification:

Purification par affinité contre l'antigène

Dilutions recommandées:

WB 1:1000-1:4000

IHC 1:50-1:500

IF 1:50-1:500

## Applications

Applications testées:

IF, IHC, WB, ELISA

Demandes citées:

IF, IHC, WB

Spécificité de l'espèce:

Humain

Espèces citées:

Humain

**Remarque-IHC: il est suggéré de démasquer l'antigène avec un tampon de TE buffer pH 9,0; (\*) A défaut, 'le démasquage de l'antigène peut être 'effectué avec un tampon citrate pH 6,0.**

Contrôles positifs:

WB : cellules HepG2, cellules HeLa, tissu cardiaque humain

IHC : tissu de cancer du foie humain,

IF : cellules HeLa,

## Informations générales

LACTB is also named as MRPL56, which is a component of the large subunit of the mitochondrial ribosome that is encoded by the nuclear genome. LACTB is a mammalian active-site serine protein that has evolved from a bacterial penicillin-binding protein. It promotes intramitochondrial membrane organization and micro-compartmentalization through polymerization (PMID:19858488). Northern blot analysis of mouse tissues detected expression at high levels in liver, heart, and skeletal muscle, with lower levels in kidney, testis, brain, lung, and spleen (PMID:11707067). The full-length of LACTB is about 61kDa, and a 115aa transit peptide can be removed in the mature form. This antibody is specific to LACTB.

## Publications notables

| Autrice                | Pubmed ID | Journal           | Application |
|------------------------|-----------|-------------------|-------------|
| Juan M Gonzalez-Morena | 36282364  | Apoptosis         | WB,IF       |
| Valentina Cutano       | 36375842  | Life Sci Alliance | WB,IHC,IF   |
| Zuzana Keckesova       | 28329758  | Nature            | WB,IHC,IF   |

## Stockage

Stockage:

Stocker à -20°C. Stable pendant un an après l'expédition.

Tampon de stockage:

PBS avec azoture de sodium à 0,02 % et glycérol à 50 % pH 7,3

L'aliquotage n'est pas nécessaire pour le stockage à -20C

\*\*\* Les 20ul contiennent 0,1% de BSA.

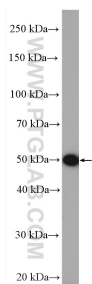
For technical support and original validation data for this product please contact:

T: 1 (888) 4PTGLAB (1-888-478-4522) (toll free in USA), or 1(312) 455-8498 (outside USA)

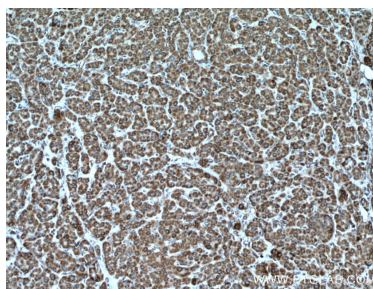
E: proteintech@ptglab.com  
W: ptglab.com

This product is exclusively available under Proteintech Group brand and is not available to purchase from any other manufacturer.

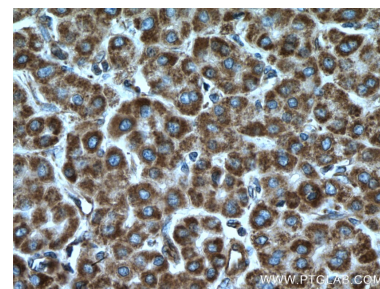
## Données de validation sélectionnées



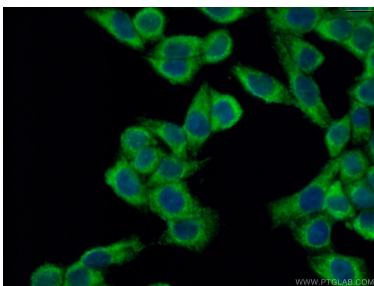
HepG2 cells were subjected to SDS PAGE followed by western blot with 18195-1-AP (LACTB antibody) at dilution of 1:2000 incubated at room temperature for 1.5 hours.



Immunohistochemical analysis of paraffin-embedded human liver cancer tissue slide using 18195-1-AP (LACTB antibody) at dilution of 1:200 (under 10x lens. Heat mediated antigen retrieval with Tris-EDTA buffer (pH 9.0).



Immunohistochemical analysis of paraffin-embedded human liver cancer tissue slide using 18195-1-AP (LACTB antibody) at dilution of 1:200 (under 40x lens. Heat mediated antigen retrieval with Tris-EDTA buffer (pH 9.0).



Immunofluorescent analysis of (4% PFA) fixed HeLa cells using 18195-1-AP (LACTB antibody) at dilution of 1:50 and Alexa Fluor 488-conjugated AffiniPure Goat Anti-Rabbit IgG(H+L).