

À des fins de recherche uniquement

# Anticorps Polyclonal de lapin anti-SHBG



Numéro de catalogue: 18200-1-AP

3 Publications

## Informations de base

Numéro de catalogue:  
18200-1-AP

Taille:  
150ul, Concentration: 400 µg/ml by Nanodrop and 353 µg/ml by Bradford method using BSA as the standard;

Hôte:  
Lapin

Isotype:  
IgG

Immunogen Catalog Number:  
AG12683

Numéro d'acquisition GenBank:  
BC101785

Identification du gène (NCBI):  
6462

Nom complet:  
sex hormone-binding globulin

MW calculé  
402 aa, 44 kDa

MW observés:  
42-44 kDa

Méthode de purification:  
Purification par affinité contre l'antigène

Dilutions recommandées:  
WB 1:500-1:2000  
IHC 1:50-1:500

## Applications

Applications testées:  
IHC, WB, ELISA

Demandes citées:  
WB

Spécificité de l'espèce:  
Humain

Espèces citées:  
Chèvre

**Remarque-IHC: il est suggéré de démasquer l'antigène avec un tampon de TE buffer pH 9,0; (\*) A défaut, 'le démasquage de l'antigène peut être effectué avec un tampon citrate pH 6,0.**

Contrôles positifs:

WB : plasma humain,

IHC : tissu testiculaire de souris, tissu hépatique humain

## Informations générales

SHBG (sex hormone-binding globulin), also known as androgen-binding protein (ABP), is the specific transport protein for sex steroid hormones in humans. SHBG is synthesized mainly by the liver and circulates in the blood, in form of homodimer with a single steroid-binding site per dimer. In addition to the plasma SHBG, a testis isoform expressed by Sertoli cells also exists due to the gene alternative splicing. Various bands (44-56 kDa) recognized by this antibody may represent variably glycosylated or different isoforms of SHBG.

## Publications notables

Autrice	Pubmed ID	Journal	Application
Huaming Xi	36332369	Theriogenology	WB
Huaming Xi	34774699	Mol Cell Endocrinol	WB
Huaming Xi	34467369	Biol Reprod	WB

## Stockage

Stockage:

Stocker à -20°C. Stable pendant un an après l'expédition.

Tampon de stockage:

PBS avec azoture de sodium à 0,02 % et glycérol à 50 % pH 7,3

L'aliquotage n'est pas nécessaire pour le stockage à -20C

\*\*\* Les 20ul contiennent 0,1% de BSA.

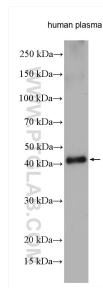
For technical support and original validation data for this product please contact:

T: 1 (888) 4PTGLAB (1-888-478-4522) (toll free in USA), or 1(312) 455-8498 (outside USA)

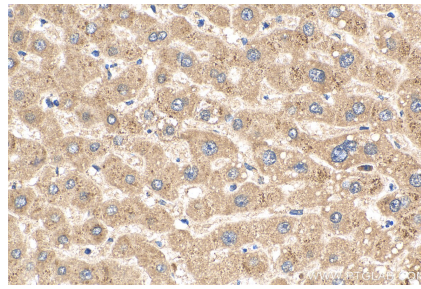
E: proteintech@ptglab.com  
W: ptglab.com

This product is exclusively available under Proteintech Group brand and is not available to purchase from any other manufacturer.

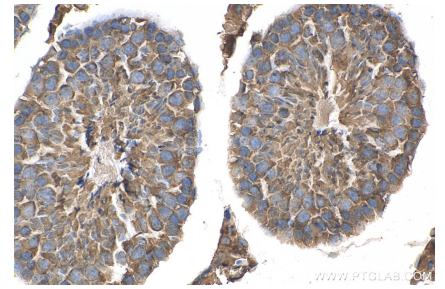
## Données de validation sélectionnées



human plasma were subjected to SDS PAGE followed by western blot with 18200-1-AP (SHBG antibody) at dilution of 1:1000 incubated at room temperature for 1.5 hours.



Immunohistochemical analysis of paraffin-embedded human liver tissue slide using 18200-1-AP (SHBG antibody) at dilution of 1:200 (under 40x lens). Heat mediated antigen retrieval with Tris-EDTA buffer (pH 9.0).



Immunohistochemical analysis of paraffin-embedded mouse testis tissue slide using 18200-1-AP (SHBG antibody) at dilution of 1:200 (under 40x lens). Heat mediated antigen retrieval with Tris-EDTA buffer (pH 9.0).