

À des fins de recherche uniquement

# Anticorps Polyclonal de lapin anti-PBX1



Numéro de catalogue: 18204-1-AP

7 Publications

## Informations de base

Numéro de catalogue:  
18204-1-AP

Taille:  
150ul , Concentration: 600 µg/ml by Nanodrop and 313 µg/ml by Bradford method using BSA as the standard;

Hôte:  
Lapin

Isotype:  
IgG

Immunogen Catalog Number:  
AG12817

Numéro d'acquisition GenBank:  
BC101578

Identification du gène (NCBI):  
5087

Nom complet:  
pre-B-cell leukemia homeobox 1

MW calculé  
430 aa, 47 kDa

MW observés:  
52 kDa

Méthode de purification:  
Purification par affinité contre l'antigène

Dilutions recommandées:  
WB 1:500-1:1000  
IP 0.5-4.0 ug for IP and 1:500-1:1000 for WB  
IF 1:20-1:200

## Applications

Applications testées:  
IF, IP, WB, ELISA

Demandes citées:  
CoIP, IHC, WB

Spécificité de l'espèce:  
Humain, rat, souris

Espèces citées:  
Humain, souris

Contrôles positifs:

WB : cellules A2780, cellules HeLa

IP : cellules A2780,

IF : cellules HeLa,

## Informations générales

PBX1, also named as Pre-B-cell leukemia transcription factor 1, is a 430 amino acid protein, which belongs to the TALE/PBX homeobox family. PBX1 is expressed in all tissues except in cells of the B and T lineage. PBX1 acts as a transcriptional activator of PF4 in complex with MEIS1. PBX1 may have a role in steroidogenesis and, subsequently, sexual development and differentiation. Isoform PBX1b as part of a PDX1:PBX1b:MEIS2b complex in pancreatic acinar cells is involved in the transcriptional activation of the ELA1 enhancer. PBX1 exists two isoforms (PBX1a and PBX1b) and molecular weight of PBX1 is 47 kDa and 38 kDa.

## Publications notables

Autrice	Pubmed ID	Journal	Application
Xin Yang	36297316	Pharmaceuticals (Basel)	WB
Qiao Song	36243980	Nucleic Acids Res	WB, CoIP
Wang Chen	36430539	Int J Mol Sci	WB

## Stockage

Stockage:

Stocker à -20°C. Stable pendant un an après l'expédition.

Tampon de stockage:

PBS avec azoture de sodium à 0,02 % et glycérol à 50 % pH 7,3

L'aliquotage n'est pas nécessaire pour le stockage à -20C

\*\*\* Les 20ul contiennent 0,1% de BSA.

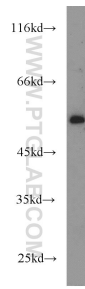
For technical support and original validation data for this product please contact:

T: 1 (888) 4PTGLAB (1-888-478-4522) (toll free in USA), or 1(312) 455-8498 (outside USA)

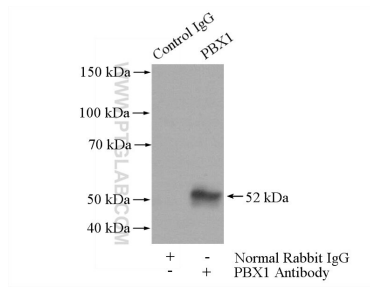
E: proteintech@ptglab.com  
W: ptglab.com

This product is exclusively available under Proteintech Group brand and is not available to purchase from any other manufacturer.

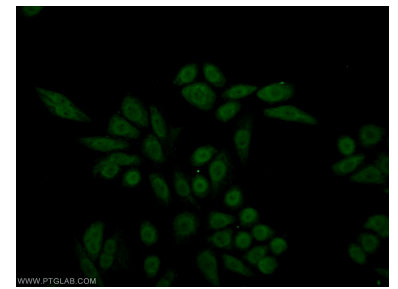
## Données de validation sélectionnées



A2780 cells were subjected to SDS PAGE followed by western blot with 18204-1-AP (PBX1 antibody) at dilution of 1:500 incubated at room temperature for 1.5 hours.



IP Result of anti-PBX1 (IP:18204-1-AP, 4 $\mu$ g; Detection:18204-1-AP 1:500) with A2780 cells lysate 1000 $\mu$ g.



Immunofluorescent analysis of HeLa cells using 18204-1-AP (PBX1 antibody) at dilution of 1:50 and Alexa Fluor 488-conjugated AffiniPure Goat Anti-Rabbit IgG(H+L).