

À des fins de recherche uniquement

# Anticorps Polyclonal de lapin anti-CCL28



Numéro de catalogue: 18214-1-AP

4 Publications

## Informations de base

Numéro de catalogue:

18214-1-AP

Taille:

150ul, Concentration: 400 µg/ml by Nanodrop and 327 µg/ml by Bradford method using BSA as the standard;

Hôte:

Lapin

Isotype:

IgG

Immunogen Catalog Number:

AG12920

Numéro d'acquisition GenBank:

BC069532

Identification du gène (NCBI):

56477

Nom complet:

chemokine (C-C motif) ligand 28

MW calculé

127 aa, 14 kDa

MW observés:

8 kDa-9 kDa

Méthode de purification:

Purification par affinité contre l'antigène

Dilutions recommandées:

WB 1:500-1:1000

IHC 1:50-1:500

## Applications

Applications testées:

FC, IHC, WB, ELISA

Demandes citées:

IF, IHC, WB

Spécificité de l'espèce:

Humain, souris

Espèces citées:

Humain, rat, souris

**Remarque-IHC: il est suggéré de démasquer l'antigène avec un tampon de TE buffer pH 9,0; (\*) À défaut, 'le démasquage de l'antigène peut être 'effectué avec un tampon citrate pH 6,0.**

Contrôles positifs:

WB : tissu splénique humain, cellules Jurkat, cellules PC-3, tissu splénique de souris

IHC : tissu de cancer du côlon humain,

## Informations générales

CCL28, also named as SCYA28, CCK1 and MEC, belongs to the intercrine beta (chemokine CC) family. It has chemotactic activity for resting CD4, CD8 T-cells and eosinophils. CCL28 binds to CCR3 and CCR10 and induces calcium mobilization in a dose-dependent manner. CCL28 is expressed in a variety of human and mouse tissues, and it appears to be predominantly produced by epithelial cells. It is produced by epithelial cells of these tissues suggesting that this chemokine can play an important role by linking homing mechanisms between the gut, nasal mucosa and mammary gland (MG). In WB test, CCL28 is 14kd and 8-9kd (a putatively to a degradation fragment).

## Publications notables

Autrice	Pubmed ID	Journal	Application
Tianming Li	36461593	Int Immunopharmacol	IHC, WB
Xiao Li Yang	28713975	Oncol Rep	WB
Tara Karnezis	30709930	Cancer Res	IHC, IF

## Stockage

Stockage:

Stocker à -20°C. Stable pendant un an après l'expédition.

Tampon de stockage:

PBS avec azoture de sodium à 0,02 % et glycérol à 50 % pH 7,3

L'aliquotage n'est pas nécessaire pour le stockage à -20C

\*\*\* Les 20ul contiennent 0,1% de BSA.

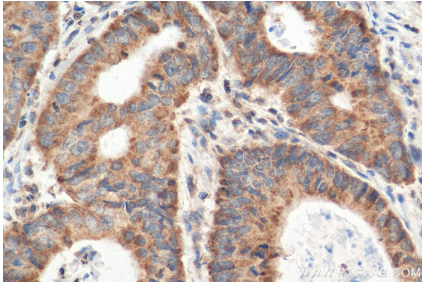
For technical support and original validation data for this product please contact:

T: 1 (888) 4PTGLAB (1-888-478-4522) (toll free in USA), or 1(312) 455-8498 (outside USA)

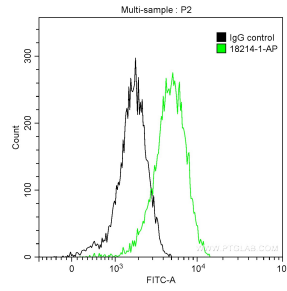
E: proteintech@ptglab.com  
W: ptglab.com

This product is exclusively available under Proteintech Group brand and is not available to purchase from any other manufacturer.

## Données de validation sélectionnées



Immunohistochemical analysis of paraffin-embedded human colon cancer tissue slide using 18214-1-AP (CCL28 antibody) at dilution of 1:200 (under 40x lens). Heat mediated antigen retrieval with Tris-EDTA buffer (pH 9.0).



1X10<sup>6</sup> Jurkat cells were intracellularly stained with 0.5 ug Anti-Human CCL28 (18214-1-AP) and CoraLite®488-Conjugated AffiniPure Goat Anti-Rabbit IgG(H+L) at dilution 1:1000 (green), and 0.5 ug Control Antibody. Cells were fixed with 90% MeOH.



human spleen tissue were subjected to SDS PAGE followed by western blot with 18214-1-AP (CCL28 antibody) at dilution of 1:300 incubated at room temperature for 1.5 hours.