

À des fins de recherche uniquement

Anticorps Polyclonal de lapin anti-LSR



Numéro de catalogue: 18216-1-AP

2 Publications

Informations de base

Numéro de catalogue: 18216-1-AP	Numéro d'acquisition GenBank: BC004381	Méthode de purification: Purification par affinité contre l'antigène
Taille: 150ul, Concentration: 500 µg/ml by Nanodrop and 300 µg/ml by Bradford method using BSA as the standard;	Identification du gène (NCBI): 51599	Dilutions recommandées: WB 1:500-1:2000 IHC 1:50-1:500
Hôte: Lapin	Nom complet: lipolysis stimulated lipoprotein receptor	
Isotype: IgG	MW calculé: 71 kDa	
Immunogen Catalog Number: AG12961	MW observés: 60-70 kDa, 56 kDa	

Applications

Applications testées:

FC, IHC, WB, ELISA

Demandes citées:

WB

Spécificité de l'espèce:

Humain, rat, souris

Espèces citées:

souris

Remarque-IHC: il est suggéré de démasquer l'antigène avec un tampon de TE buffer pH 9,0; (*) A défaut, le démasquage de l'antigène peut être effectué avec un tampon citrate pH 6,0.

Contrôles positifs:

WB : cellules HT-29, cellules HepG2, tissu hépatique de rat, tissu hépatique de souris

IHC : tissu hépatique humain,

Informations générales

LSR (lipolysis stimulated lipoprotein receptor) is a lipoprotein receptor primarily expressed in the liver and activated by free fatty acids (PMID: 10224102). This remnant receptor binds both apoB- and apoE-containing lipoproteins and displays greatest affinity for TG-rich lipoproteins. Distribution of LSR causes embryonic lethality in mice, indicating that the expression of LSR is critical for liver and embryonic development (PMID: 15265030). Investigations show that LSR is a multimer consisting of α subunit (68 kDa) and β subunit (56 kDa) associated through disulfide bridges (PMID: 10224102; 19188430; 18644789).

Publications notables

Autrice	Pubmed ID	Journal	Application
Yanjie Chen	31706176	Biosens Bioelectron	
Zijun Peng	34741939	J Hazard Mater	WB

Stockage

Stockage:

Stocker à -20°C. Stable pendant un an après l'expédition.

Tampon de stockage:

PBS avec azoture de sodium à 0,02 % et glycérol à 50 % pH 7,3

L'aliquotage n'est pas nécessaire pour le stockage à -20C

*** Les 20ul contiennent 0,1% de BSA.

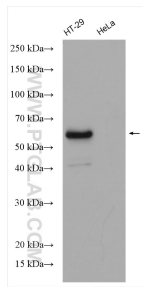
For technical support and original validation data for this product please contact:

T: 1 (888) 4PTGLAB (1-888-478-4522) (toll free in USA), or 1(312) 455-8498 (outside USA)

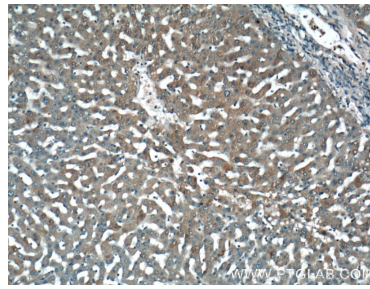
E: proteintech@ptglab.com
W: ptglab.com

This product is exclusively available under Proteintech Group brand and is not available to purchase from any other manufacturer.

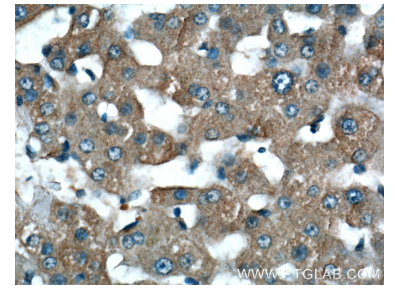
Données de validation sélectionnées



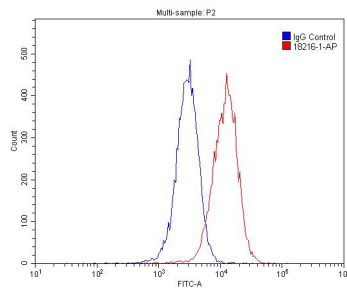
HT-29 cells (LSR+) and HeLa cells (LSR-) were subjected to SDS PAGE followed by western blot with 18216-1-AP (LSR antibody) at dilution of 1:1000 incubated at room temperature for 1.5 hours.



Immunohistochemical analysis of paraffin-embedded human liver tissue slide using 18216-1-AP (LSR Antibody) at dilution of 1:200 (under 10x lens).



Immunohistochemical analysis of paraffin-embedded human liver tissue slide using 18216-1-AP (LSR Antibody) at dilution of 1:200 (under 40x lens).



1X10⁶ HepG2 cells were stained with .2ug LSR antibody (18216-1-AP, red) and control antibody (blue). Fixed with 4% PFA blocked with 3% BSA (30 min). Alexa Fluor 488-conjugated AffiniPure Goat Anti-Rabbit IgG(H+L) with dilution 1:1500.