

À des fins de recherche uniquement

# Anticorps Polyclonal de lapin anti-IkB Alpha



Numéro de catalogue: 18220-1-AP

9 Publications

## Informations de base

Numéro de catalogue:  
18220-1-AP

Taille:  
150ul, Concentration: 1000 µg/ml by Nanodrop and 347 µg/ml by Bradford method using BSA as the standard;

Hôte:  
Lapin

Isotype:  
IgG

Immunogen Catalog Number:  
AG12979

Numéro d'acquisition GenBank:  
BC004983

Identification du gène (NCBI):

Nom complet:  
nuclear factor of kappa light polypeptide gene enhancer in B-cells inhibitor, alpha

MW calculé  
36 kDa

MW observés:  
39 kDa

Méthode de purification:  
Purification par affinité contre l'antigène

Dilutions recommandées:  
WB 1:500-1:3000  
IP 0.5-4.0 ug for IP and 1:500-1:1000 for WB  
IHC 1:50-1:500  
IF 1:50-1:500

## Applications

Applications testées:  
IF, IHC, IP, WB, ELISA

Demandes citées:  
WB

Spécificité de l'espèce:  
Humain

Espèces citées:  
Humain, rat, souris

**Remarque-IHC: il est suggéré de démasquer l'antigène avec un tampon de TE buffer pH 9,0; (\*) À défaut, le démasquage de l'antigène peut être effectué avec un tampon citrate pH 6,0.**

Contrôles positifs:

WB : cellules HL-60, cellules HeLa, cellules Jurkat

IP : cellules HeLa,

IHC : tissu rénal humain, tissu de cancer de la prostate humaine, tissu d'estomac humain, tissu hépatique humain

IF : cellules HeLa,

## Informations générales

Nuclear factor of kappa light polypeptide gene enhancer in B-cells inhibitor, alpha (NFKB1, synonyms: IKBA, MAD-3, NFKB1). NFKB1 or NFKB2 is bound to REL, RELA, or RELB to form the NFKB complex. The NFKB complex is inhibited by I-kappa-B proteins (NFKBIA or NFKBIB), which inactivate NF-kappa-B by trapping it in the cytoplasm. Phosphorylation of serine residues on the I-kappa-B proteins by kinases (IKBKA, or IKBKB) marks them for destruction via the ubiquitination pathway, thereby allowing activation of the NF-kappa-B complex. Activated NFKB complex translocates into the nucleus and binds DNA at kappa-B-binding motifs such as 5-prime GGGRNNYYCC 3-prime or 5-prime HGGARNYYCC 3-prime.

## Publications notables

Autrice	Pubmed ID	Journal	Application
Xueling Zhou	33110436	Evid Based Complement Alternat Med	WB
Jian Zhan	27716383	J Neuroinflammation	WB
Qiang Tu	26647763	Mol Med Rep	WB

## Stockage

Stockage:

Stocker à -20°C. Stable pendant un an après l'expédition.

Tampon de stockage:

PBS avec azoture de sodium à 0,02 % et glycérol à 50 % pH 7,3

L'aliquoteage n'est pas nécessaire pour le stockage à -20C

\*\*\* Les 20ul contiennent 0,1% de BSA.

For technical support and original validation data for this product please contact:

T: 1 (888) 4PTGLAB (1-888-478-4522) (toll free in USA), or 1(312) 455-8498 (outside USA)

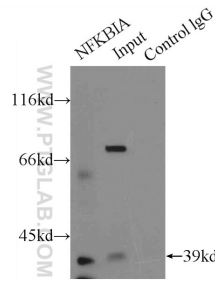
E: proteintech@ptglab.com  
W: ptglab.com

This product is exclusively available under Proteintech Group brand and is not available to purchase from any other manufacturer.

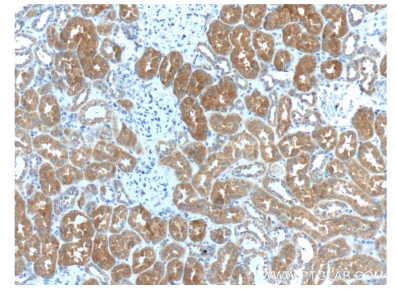
## Données de validation sélectionnées



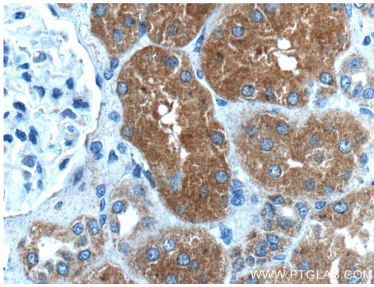
HL-60 cells were subjected to SDS PAGE followed by western blot with 18220-1-AP (IκB alpha antibody) at dilution of 1:500 incubated at room temperature for 1.5 hours.



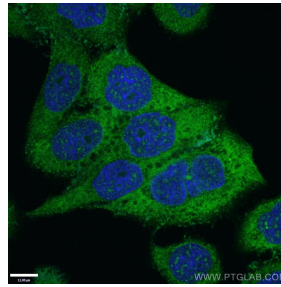
IP Result of anti-IκB alpha (IP:18220-1-AP, 5ug; Detection:18220-1-AP 1:500) with HeLa cells lysate 2000ug.



Immunohistochemical analysis of paraffin-embedded human kidney tissue slide using 18220-1-AP (IκB alpha antibody at dilution of 1:200 (under 10x lens).



Immunohistochemical analysis of paraffin-embedded human kidney tissue slide using 18220-1-AP (IκB alpha antibody at dilution of 1:200 (under 40x lens).



Immunofluorescent analysis of (4% PFA) fixed HeLa cells using 18220-1-AP (IκB alpha antibody) at dilution of 1:50 and Alexa Fluor 488-conjugated AffiniPure Goat Anti-Rabbit IgG(H+L).